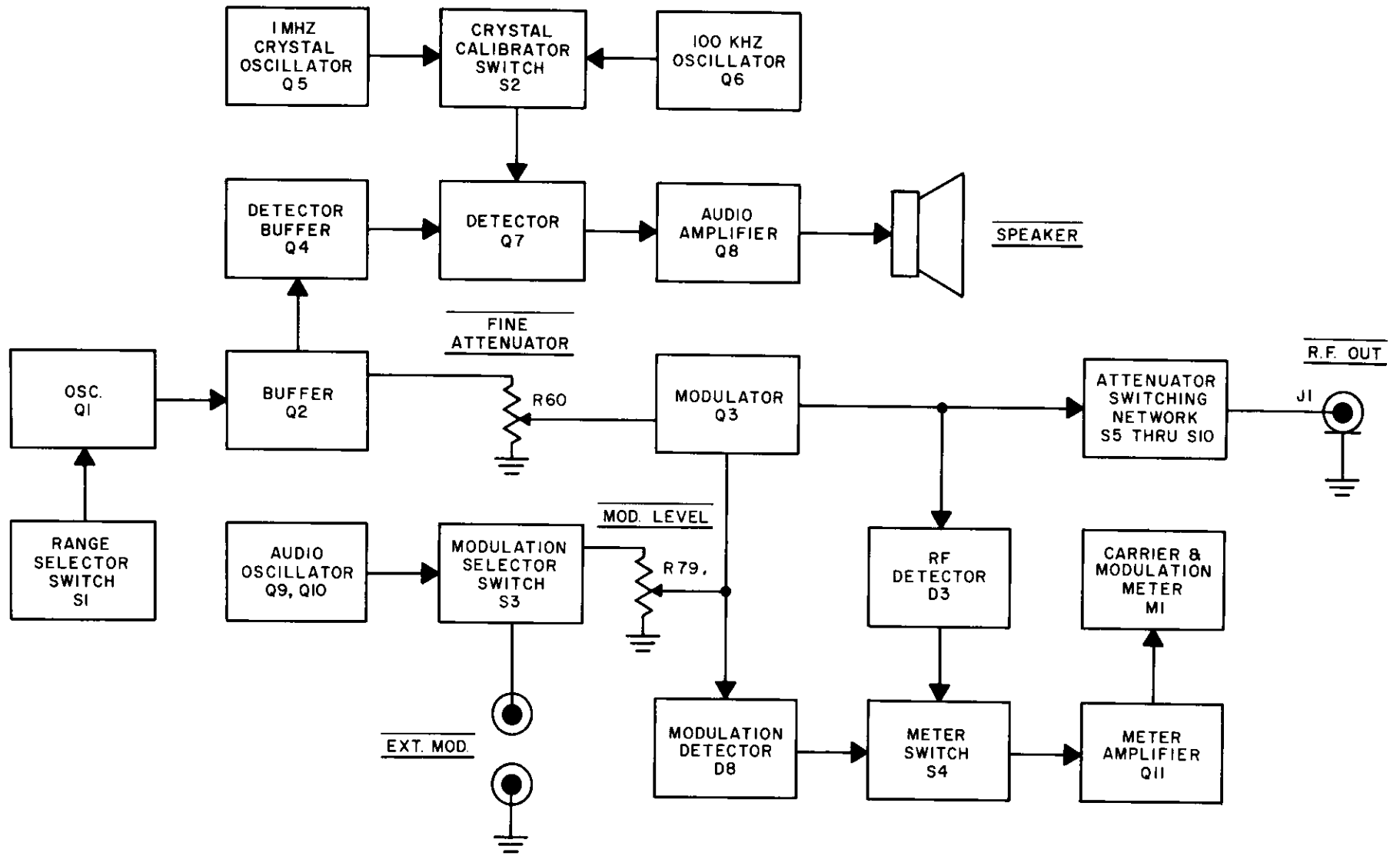


Figure 10. Model E200D Block Diagram



## B & K MODEL E-200D PARTS LIST

SCHEMATIC SYMBOL	DESCRIPTION	B & K PART No.
<b>MISCELLANEOUS</b>		
T-1	Output Transformer .....	061-011-9-001
T-2	Power Transformer 117V AC Primary .....	065-060-9-001
T-2	Power Transformer 117/234V AC Primary .....	065-060-9-002
ME-1	Meter, 2 1/4", 200 $\mu$ A, 600 $\Omega$ .....	320-027-9-001
	Fuse, 1/4 amp. 3AG .....	191-251-3-104
	Case, Top & Back .....	272-080-9-902
	Case, Sides & Bottom .....	272-070-9-903
	Cursor Marker .....	380-144-9-001
	Glamor Cap (Black) .....	384-008-9-001
PL-1	Neon Lamp w/100K Resistor .....	401-001-9-002
	Line Cord 3-wire .....	420-013-9-001
	RF Cable Assembly .....	532-004-1-000
	Speaker, 8 $\Omega$ , 2 1/4" .....	580-005-9-001
	Clip Tinnerman (Speaker) .....	652-027-9-001
	Red Jewel w/Nut .....	750-003-9-001
	Knob, Small .....	751-005-9-002
	Knob, Large .....	751-005-9-004
	Knob, Cursor Drive Assembly .....	521-079-9-001
	Dial Frequency .....	756-005-9-903
	Dial Drive, Planetary .....	769-042-9-001
	Extender Shaft .....	769-047-9-001
	Coupling, 1/4" Shaft .....	769-057-9-001
	Binding Post, Red .....	773-022-9-805
	Binding Post, Black .....	773-023-9-805
	Instruction Manual .....	480-108-9-001
	Container, Shipping .....	500-170-9-001
	Fillers, Carton .....	503-047-9-001
	Attenuator Printed Circuit Board Complete .....	532-004-1-100

NOTE: Standard value resistors and capacitors are not listed, values may be obtained from schematic diagram.

Minimum charge \$5.00 per invoice. Orders will be shipped C.O.D. unless previous open account arrangements have been made or remittance accompanies order. Advance remittance must cover postage or express charge.

Specify serial number when ordering replacement parts.

## B & K MODEL E-200D PARTS LIST

488-101-9-002F

SCHEMATIC SYMBOL	DESCRIPTION	B & K PART No.
<b>CONTROLS</b>		
R-28	30K $\Omega$ , Trim Pot—Mixer Adjust .....	008-049-9-002
R-42, 48	1K $\Omega$ , Trimpot—Carrier Cal. & Audio Osc. ....	008-068-9-001
R-50	50K $\Omega$ , Trimpot—RF Threshold .....	008-093-9-001
R-54	10K $\Omega$ , Trimpot—Mod. Cal. ....	008-058-9-001
R-60	100 $\Omega$ , Fine Attenuator .....	008-132-9-001
R-79	10K $\Omega$ , Pot. Mod. Level .....	008-133-9-001

### CAPACITORS

C-41A, 41B	Dual, Var. Condenser .....	029-010-9-001
------------	----------------------------	---------------

### DIODES AND TRANSISTORS

D-1, 2, 4, 5, 7	Diode, Silicon, 1 Amp 600 PIV .....	151-018-9-001
D-3	Diode, Germanium .....	150-003-9-001
D-6	Diode, Zener, 10V, 1 W, 5% .....	152-016-9-001
D-8	Diode, Germanium .....	150-001-9-001
Q-1	NPN, Transistor .....	176-040-9-001
Q-2, 5, 7, 8, 11	NPN, Transistor .....	176-021-9-001
Q-3	NPN, Transistor .....	176-022-9-001
Q-4	NPN, Transistor .....	176-005-9-001
Q-6, 9, 10	NPN, Transistor .....	176-020-9-001

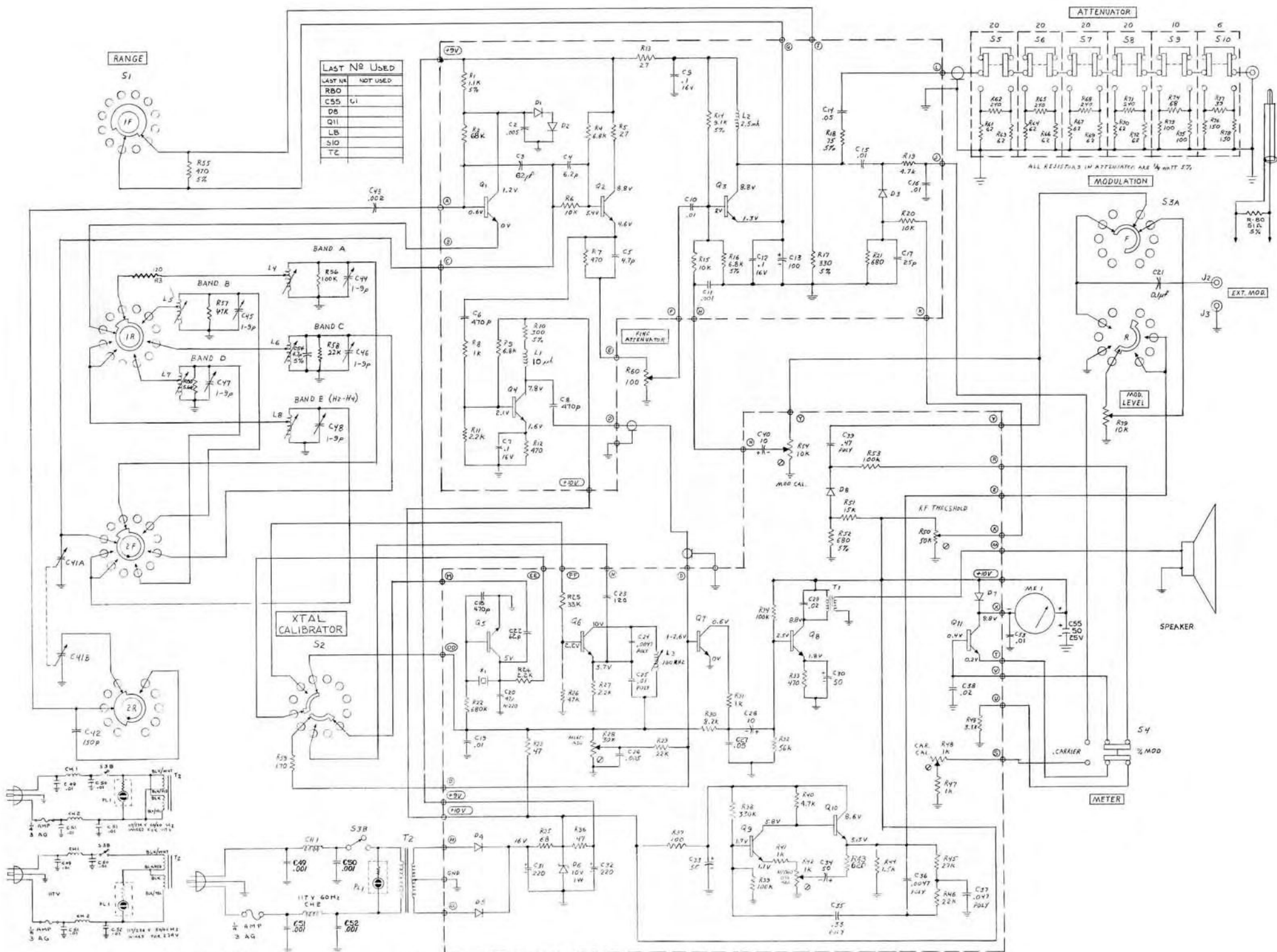
### SWITCHES

S-1	Range Rotary Switch .....	083-097-9-001
S-2	Xtal Rotary Switch .....	083-103-9-001
S-3	Mod. Selector Rotary Switch .....	083-099-9-001
S-4	Slide Switch Meter .....	084-014-9-001
S-5, 6, 7, 8, 9, 10	Slide Switch (Step Attenuator) .....	084-029-9-001

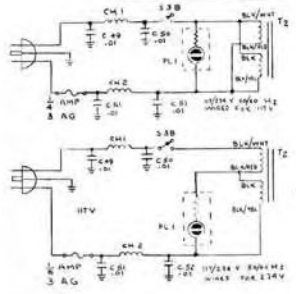
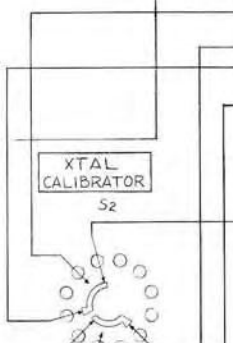
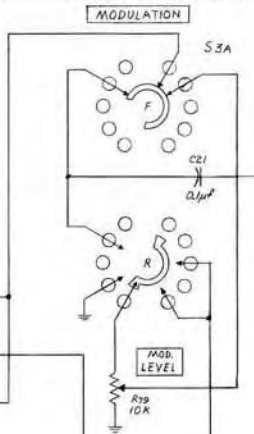
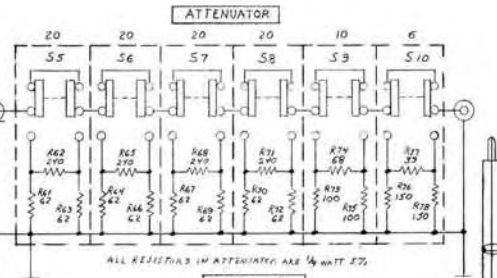
### COILS AND CHOKES

CH-1, 2	Choke, Line Filter .....	041-034-9-001
L-1	Choke, 10 mh .....	041-001-9-023
L-2	Peaking Coil 2.5 mh .....	041-028-9-001
L-3	Oscillator Coil 100 KHz .....	044-011-9-001
L-4	Oscillator BAND "A" 100 KHz-370 KHz .....	044-022-9-001
L-5	Oscillator BAND "B" 370 KHz-1.4 MHz .....	044-022-9-002
L-6	Oscillator BAND "C" 1.4 MHz-5.1 MHz .....	044-022-9-003
L-7	Oscillator BAND "D" 5.1 MHz-16 MHz .....	044-022-9-004
L-8	Oscillator BAND "E" 16 MHz-54 MHz .....	044-022-9-005

**COMPOSITE**  
**499-024-9-001J**



LAST NR USED	
LAST NR	NOT USED
R80	
C55	G1
D8	
Q11	
LB	
S10	
TC	



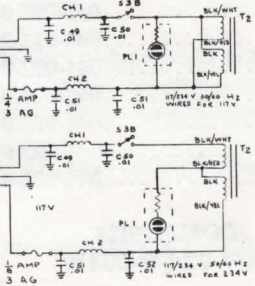
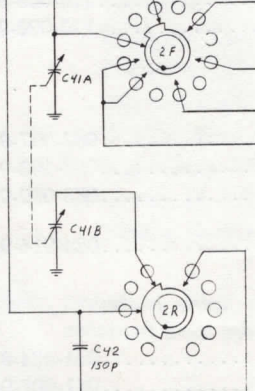
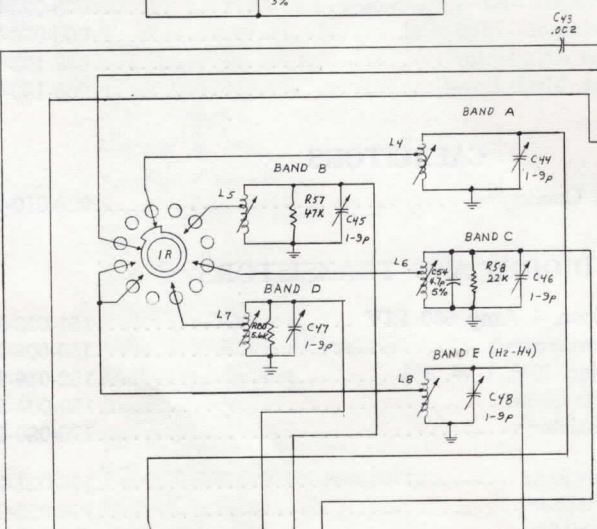
RANGE

S1



LAST NO USED

LAST NO	NOT USED
R80	R3, R56
C55	
DB	
Q11	
LB	
S10	
TZ	



BAND A

BAND B

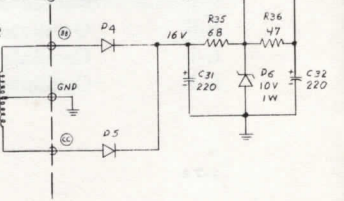
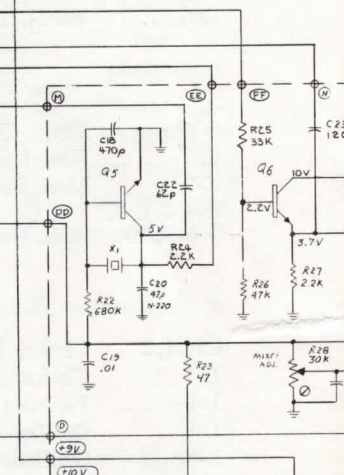
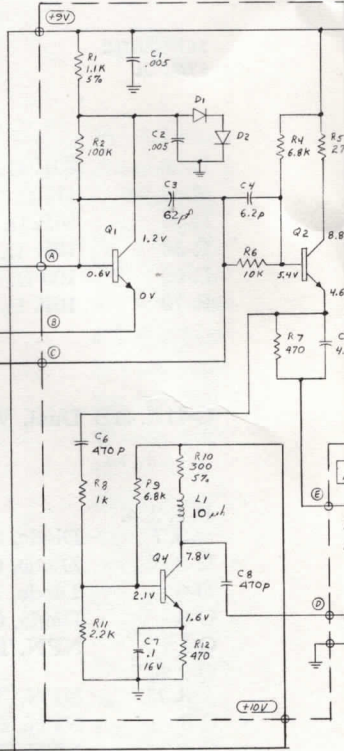
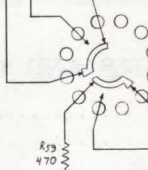
BAND C

BAND D

BAND E (Hz-Hz)

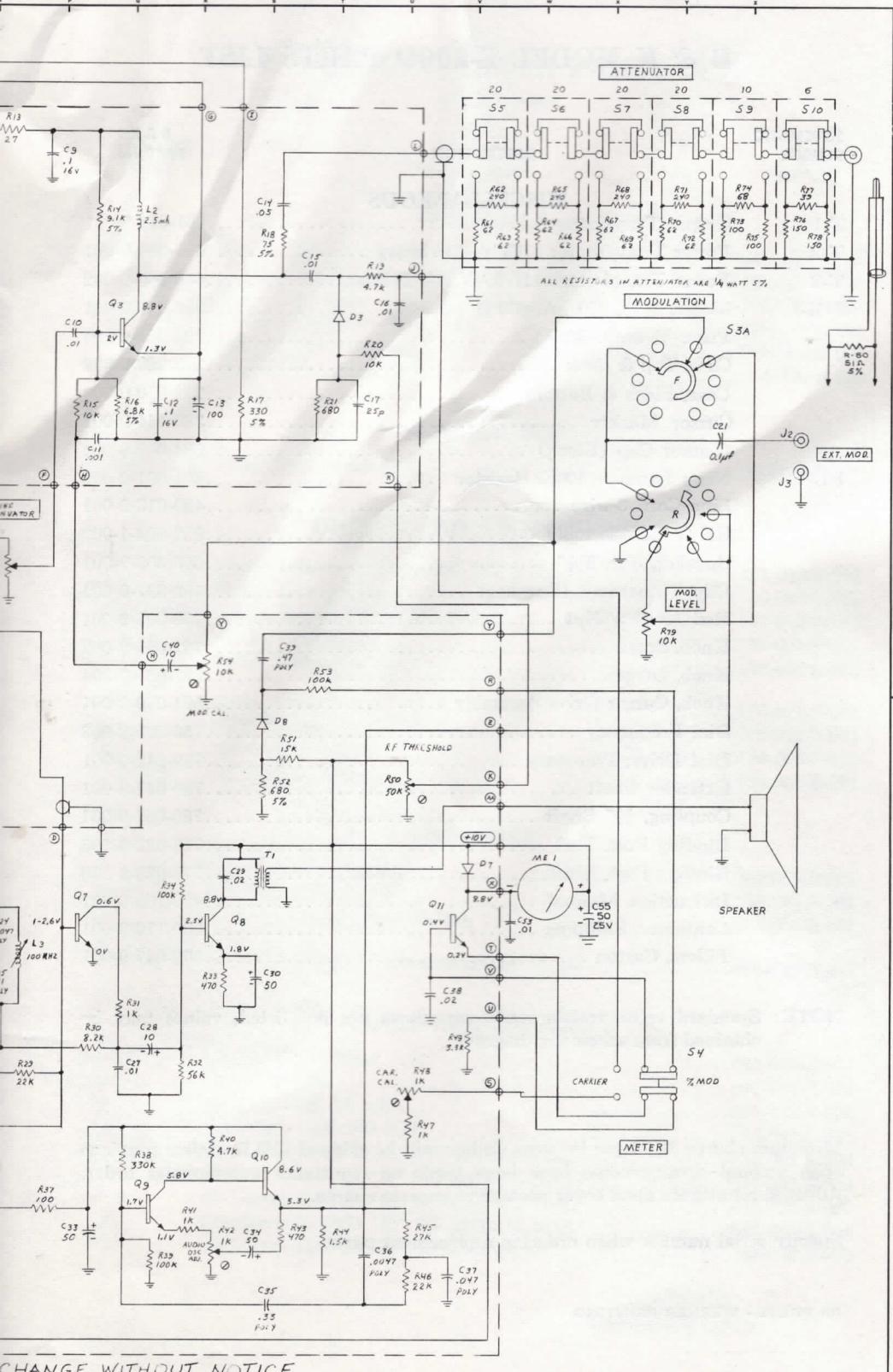
XTAL CALIBRATOR

S2



488-101-9-001-D

NOTE: SCHEMATIC SUBJECT TO



CHANGE WITHOUT NOTICE