

uniden®

SCANNING RECEIVER

MODEL : BC-50XL

**SERVICE INFORMATION
MANUAL**

UNIDEN CUSTOMER SERVICE
9340 Castlegate Drive
Indianapolis IN 46256
(317) 842-2483

UNIDEN PARTS DEPT.
9319 Castlegate Drive
Indianapolis IN 46256
(317) 842-1036

SCANNING RECEIVER

MODEL : BC-50XL

TABLE OF CONTENTS

- 1. SPECIFICATIONS**
- 2. ALIGNMENT PROCEDURES**
- 3. ALIGNMENT POINTS**
- 4. IC AND TRANSISTOR VOLTAGE CHART**
- 5. SEMICONDUCTOR LEAD IDENTIFICATION**
- 6. PARTS PRICE LIST**
- 7. TECHNICAL DRAWINGS**
 - BLOCK DIAGRAM**
 - SCHEMATIC DIAGRAM (E12-2540)**
 - WIRING DIAGRAM (E33-2641)**
 - P.C. BOARD TOP VIEW**
 - MAIN PCB (E22-6457)**
 - KEY BOARD PCB (E23-6458)**
 - P.C. BOARD BOTTOM VIEW**
 - MAIN PCB (E24-6459)**
 - KEY BOARD PCB (E24-6460)**

1. SPECIFICATIONS

SCANNING RECEIVER MODEL: BC50XL (UB-106A)

GENERAL

1. Band Coverage : 10 Bands
2. Frequency Range : 29 to 29.7 MHz (10 Meter Amateur Band)
29.7 to 50 MHz (VHF Low Band)
50 to 54 MHz (6 Meter Amateur Band)
136 to 144 MHz (Military land mobile)
144 to 148 MHz (2 Meter Amateur Band)
148 to 174 MHz (VHF High Band)
406 to 420 MHz
(Federal Government land mobile)
420 to 450 MHz (70-cm Amateur Band)
450 to 470 MHz (UHF Standard Band)
470 to 512 MHz (UHF "T" Band)
3. Channels : 10 Channels (Scan 10 Frequencies at once)
4. Display : 2 Digits LCD, with special annunciator
is "LOCK OUT"
5. Keys (PROGRAM) : Total 1 set 12 Keys
Numeric: "0" to "9"
Enter : "E"
Decimal: "."

(OPERATION) : Total 5 Keys
SCAN : Start scan
MANUAL : Direct channel access
LOCKOUT: Channel skip
REVIEW : Indicates Frequencies of
Channel Memory
6. Controls/Switches : Volume Cont. with power on/off switch
Squelch Cont.
Key PAD on/off switch
7. External Jacks : Ant. Jack : BNC Type
Ear Phone Jack : 2.5 ϕ
(Ext. Sp.)
Ext. Power Jack: 5.5 ϕ

8. Speaker : 8 ohm 1-2/3 inches
9. Power Requirements : 7.2 V DC provided by 5-AA size standard Batteries (not included) or optional rechargeable Battery Pack and AC Adapter; AD-100U (Charger)
10. Operating Voltage : 6 to 8 V DC at Batt. Terminal
10 to 14 V DC at Ext. PWR Jack
11. BATT. Low Indication : A beep tone with 15 second interval
12. Operating TEMP. : -20°C to +60°C
13. Storage TEMP. : -30°C to +70°C
14. Size : (Approx.) 2-5/8"(W) 1-3/8"(D) 6-6/8"(H)
15. Weight : (Approx.) 0.66 lbs. (300 g)
16. Accessories : Flexible Antenna
Belt Clip

MEASUREMENT CONDITIONS

- 1. Power Source : 7.2 V DC
- 2. Antenna Impedance : 50 ohm
- 3. Test Temperature : 25°C
- 4. Modulation Frequency : 1 kHz
- 5. Deviation : +3 kHz
- 6. Mean Signal Input Level : 1 mV
- 7. Audio Output Load : 8 ohm resistive load
(at Ear Phone Jack)

<u>ITMS</u>	<u>UNIT</u>	<u>NOMINAL</u>	<u>LIMIT</u>
1. Sensitivity (12dB SINAD)			
VHF Low Band 30.05 MHz	uV	0.4	0.8
40.84 MHz	uV	0.4	0.8
49.9 MHz	uV	0.4	0.8
VHF HI Band 138.15 MHz	uV	0.5	1.0
162.4 MHz	uV	0.5	1.0
173.225 MHz	uV	0.5	1.0
UHF Band 406.875 MHz	uV	0.7	1.5
453.25 MHz	uV	0.7	1.5
511.9125 MHz	uV	0.7	1.5
2. Threshold Squelch (MANUAL)			
VHF Low Band at 40.84 MHz	uV	0.4	0.8
VHF HI Band at 162.4 MHz	uV	0.5	1.2
UHF Band at 453.25 MHz	uV	0.7	1.8
3. Tight Squelch (SCAN)	uV	3.0	10
4. Hum/Noise			
VHF Low Band at 40.84 MHz	dB	40	30
VHF HI Band at 162.4 MHz	dB	35	25
UHF Band at 453.25 MHz	dB	30	20
5. Audio Frequency Response -6 dB			
(at 40.84 MHz) Low	Hz	250	150 to 350
High	Hz	2200	1800 to 2600
6. Audio Output Power at 40.84 MHz			
7.8 V DC 10% THD	W	0.3	0.22
7. Distortion at 40.84 MHz	%	3	6
8. Scan Rate	CH/Sec.	15	15 ± 5
9. Oscillator Activating Voltage V		-	6.0

<u>ITEMS</u>	<u>UNIT</u>	<u>NOMINAL</u>	<u>LIMIT</u>
10. Scan Delay	Sec.	3	3 \pm 1.5
11. Current Drain (at full output)	mA DC	140	100 to 180
(at Squelched)	mA DC	50	20 to 80
12. Batt. Low Ind. Turn on Voltage	V	6.3	5.8 to 6.8

2. ALIGNMENT PROCEDURES

TEST EQUIPMENT REQUIRED

AC Adaptor (AD-100U)	SINAD meter
Digital Voltmeter	Oscilloscope
Frequency Counter	Scope Oscillator
Watt meter	

1. PREPARATION OF ALIGNMENT (CHANGE TO THE TEST MODE)

PRESET

POWER SUPPLY

AC Voltage : 120 V (118 - 123V), 60Hz
 DC Voltage : 12.0 V

POWER SWITCH : OFF
 (VOLUME : Counterclockwise)
 SQUELCH : Clockwise

- 1-1 Remove the Battery Pack and make both terminals on C202 short to discharge electricity with such as tweezers. Connect DC Plug of AC adapter to DC jack, and Power switch on. Then the display shows 2 ch (L - E - 2 ch) by pressing MANUAL Key two times. Confirm that test frequencies (Table. 1) have been called to each memory channel.

Attention : Misoperation in order or method often makes indication error "E" or incorrect indication of frequency.

Table. 1 TEST FREQUENCIES

CH	FREQUENCY
1	30.05 MHz
2	40.84 MHz
3	49.90 MHz
4	138.15 MHz
5	162.40 MHz
6	173.225 MHz
7	406.875 MHz
8	453.25 MHz
9	511.9125 MHz
10	452.5 MHz

2. ALIGNMENT OF PLL

STEP	ADJUSTMENT	REMARKS
1	CT4	Connect Frequency Counter to TP1(R31). Adjust CT4 for 10.4000 ± 0.0000 MHz.
2	NO	Connect Oscilloscope to TP1(R31). Confirm the Wave-form for following figure and voltage is approx. $450\text{mV}_{\text{p-p}}$.

3. ALIGNMENT OF VCO

VHF BAND (LOW) CH : 1, 2, 3
 VHF BAND (HI) CH : 4, 5, 6
 UHF BAND CH : 7, 8, 9, 10

NOTE : To confirm frequency of each channel, push "REVIEW" key.
 Then the frequency will be displayed one after another
 from larger figure by turning on and off.

STEP	PRESET TO	ADJUSTMENT	REMARKS
1	CH : 9 : 511.912 MHz (Key 'MANUAL' "1" "0" 'MANUAL' "REVIEW") (Display "5" "1" "1" "_" "9" "1" "2" "9")	L 15	Connect Oscilloscope (DC) or Digital DC Voltmeter to TP2 (R63). (Don't use Analog DC Voltmeter.) Adjust L11 for 13.5 ± 0.2 V.
2	CH : 7, 8	NO	Confirm VCO voltage by Table.3 for each channel.
3	CH : 4, 5, 6	NO	Same as Step 2.
4	CH : 1 : 30.05 MHz	L 14	Same as Step 1. Adjust L14 for 1.4 ± 0.2 V.
5	CH : 2, 3	NO	Same as Step 2.

Table. 3 VCO VOLTAGE

	CH	FREQUENCY	VOLTAGE
VHF(Low) Adjust	1	30.05 MHz	1.4 \pm 0.2
Confirm	2	40.84 MHz	7.1 \pm 0.5
Confirm	3	49.90 MHz	11.5 \pm 0.5
Confirm	4	138.15 MHz	1.7 \pm 0.5
Confirm	5	162.40 MHz	8.2 \pm 0.5
Confirm	6	173.225 MHz	11.5 \pm 0.5
Confirm	7	406.875 MHz	2.7 \pm 0.5
Confirm	8	453.25 MHz	7.1 \pm 0.5
VHF(High)/UHF Adjustment	9	511.9125 MHz	13.5 \pm 0.2

4 ADJUSTMENT OF IF

PRESET TO	ADJUSTMENT	REMARKS
CH : 6 RF Output voltage : Max	L5, L6	Connect RF Output of Scope-generator to Antenna, and Vertical Input-probe to TP3 (R29). Decrease RF Output voltage and adjust L5, L6 so that wave has symmetrical form and minimum ripple.

10.85MHz Marker

A: Minimum ripple
 B: Maximum Power level of 10.85MHz with smooth wave form
 C: Symmetry against 10.85MHz Marker

5. ADJUSTMENT OF DISCRIMINATOR

PRESET TO	ADJUSTMENT	REMARKS
CH : 2 SSG : 40.84MHz : 1mV NO modulation	L 13	Connect Digital voltmeter to TP4 (R34). Adjust L13 for 2.7+0.1V (DC).

6. ADJUSTMENT OF RECEIVING

PRESET : CONNECTION Figure 2.
 SQUELCH Maximum (Clockwise)
 SIGNAL FM 1 kHz, deviation \pm 3kHz
 OUTPUT 50 mW (0.63V at 8 ohm resistance)

VHF BAND (LOW) CH : 1, 2, 3
 VHF BAND (HI) CH : 4, 5, 6
 UHF BAND CH : 7, 8, 9

6.1 ADJUSTMENT OF SENSITIVITY

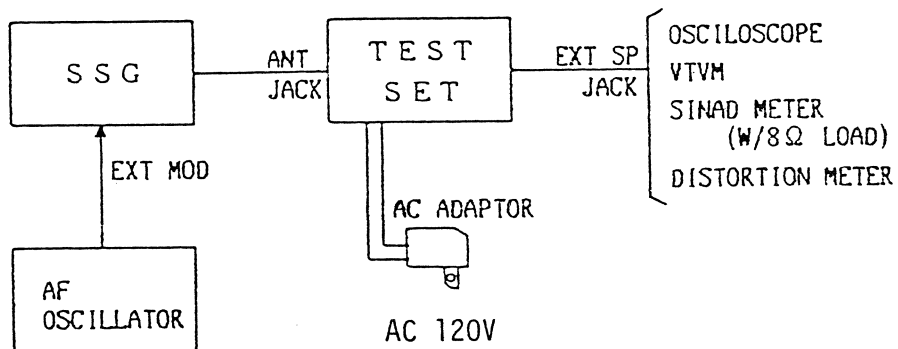
PRESET TO	ADJUSTMENT	REMARKS
CH : 4 SSG : 138.15MHz approx. 1uV	VOLUME CONTROL	Connect Watt meter to Audio output terminal. Adjust Volume control for approx. 50mW (8ohm, 0.63V).
Same as above	L8, L10	Connect SINAD meter to Audio output terminal. Adjust for L8 and L10 for the minimum SINAD. Then adjust SSG for 12dB SINAD and confirm that the output voltage of SSG is less than 1.0uV.
CH : 1 SSG : 30.05MHz approx. 3uV	L9	Connect SINAD meter to Audio output terminal. Adjust L9 for the minimum SINAD.
CH : 2 SSG : 40.84MHz approx. 1uV	L11	Same as above. After adjustment set SSG for 12dB SINAD and confirm that output voltage of SSG is less than 0.8uV

PRESET TO	ADJUSTMENT	REMARKS
CH : 3 SSG : 49.9MHz	NO	Adjust SSG for 12dB SINAD and confirm that the output voltage of SSG is less than 0.8uV.
CH : 7 SSG : 406.87MHz approx. 30uV	CT1, 2, 3	Same as above. Repeat this adjustment for a few times. Confirm that the output voltage of SSG is less than 1.5uV.
CH:8 SSG:453.25MHz CH:9 SSG:511.9125 MHz	NO	Adjust SSG for 12dB SINAD and confirm that the output voltage of SSG is less than 1.5uV.

6.2 ADJUSTMENT OF SQUELCH

PRESET TO	ADJUSTMENT	REMARKS
CH : 9 SSG : 511.9125MHz 1.1uV Volume : 50mW Squelch : CCW	VR1	Connect Voltmeter to Audio output. Adjust VR1 to the point where Audio output voltage will just appear.

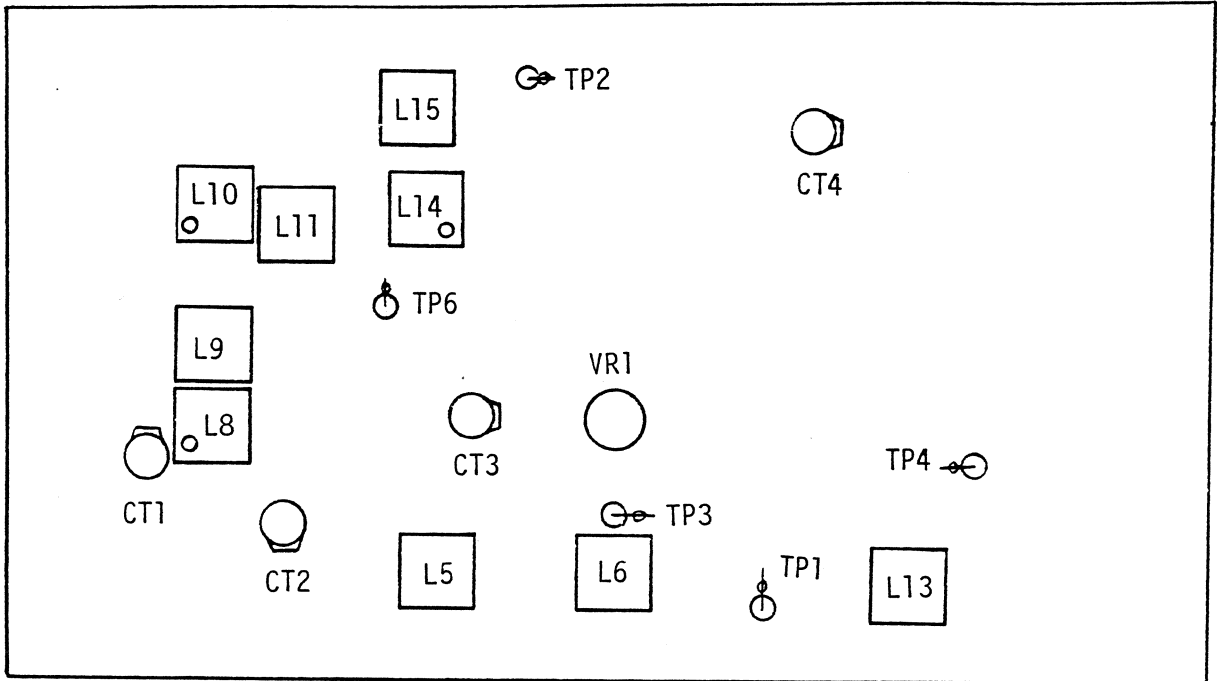
Figure 2. TEST EQUIPMENT CONNECTION FOR RECEIVING TEST



3. ALIGNMENT POINTS

MAIN P.C.BOARD

(B001 PH-025)




4. IC AND TRANSISTOR VOLTAGE CHART

TR	PIN	VHF	VHF	UHF	REMARKS	TR	PIN	VHF	VHF	UHF	REMARKS
Q		LOW	HI			Q		LOW	HI		
1	B E C			0.8 0.0 5.8	*A	11	E C B	0/0 0/1.9 0/0			*C SQ OPEN/CLOSE
2	B E C			0.7 0.0 6.2	*A	12	E C B	1.2/1.8 0/14.2 0/0			*C Battery/AC ADAPTOR
3	E C B		0.0 3.2 0.7		*C	13	E C B	0.34K/9.0 0/13.8 0.34K/9.7			*C Battery/AC ADAPTOR
4	E C B			0 6.2 0.7	*C	14	E C B	0/0 0/0 0.7/0.7			*C Battery/AC ADAPTOR
5	E C B		0.2 5.1 1.0		*C	15	E C B	0 7.0 0.6			*C
6	D S G ₁ G ₂		7.1 0 0.1 0		*D	16	E C B	0/0 0/0 0/0.6			*C SQ OPEN/CLOSE
7	E C B	0 7.2 0.1	0 7.2 0.1	6.2 7.2 6.9	*C	19	E C B	1.7 5.2 2.3			*C
8	E C B	5.3 5.3 4.7	5.3 5.3 4.7	5.3 0.5 6.1	*C	20	E C B	1.6 5.1 2.3			*C
9	E C B		5.4 0 5.4		*C	21	E C B	2.3 5.1 3.0			*C
10	E C B		0/0 4.8/0 0.1/0.6		*C SQ OPEN/CLOSE	VHF (Low) : CH & Freq (MHz) VHF (Hi) : 2 : 40.84 UHF : 5 : 162.4 : 8 : 453.25					
*	PIN	CONNECTIONS					E	Supply Voltage : 7.2V DC (Battery terminal)			
		A	B	C	D		Val : Min SQ OPEN				

TR	PIN	VHF	VHF	UHF	REMARKS
Q		LOW	HI		
	E		0		*C
22	C		6.4		
	B		0.7		
	E		0/1.3		*C
23	C		7.1/2.9		SQ
	B		0/1.8		OPEN/CLOSE
	E		0/14.2		*C
25	C		0.2/14.2		Battery/AC
	B		0/13.6		ADAPTOR
	E		4.3		*C
26	C		5.1		
	B		5.0		

TR	PIN	VHF	VHF	UHF	REMARKS
Q		LOW	HI		
	E		0		*E
201	C		5.5		
	B		0.1		
	E		0		*E
202	C		0.1		
	B		0.6		
	E		0		*E
203	C		0		
	B		0.6		
	E		0		*E
204	C		4.9		
	B		0		
	E		4.9		*E
205	C		0		
	B		4.9		
	E		0		*E
206	C		4.8		
	B		0		
	E		4.9		*E
207	C		4.9		
	B		5.5		
	E		0		*E
208	C		0		
	B		0.6		
	E	0	0	0	*E
210	C	0.1	0.1	6.9	
	B	0.7	0.7	0	
	E	0	0	0	*E
212	C	5.0	5.0	5.0	
	B	0	0	0	
	E		5.5		*E
213	C		7.2		
	B		6.1		

IC	PIN	VHF	VHF	UHF	REMARKS
NBR		LOW	HI		
	1		5.2		
	2		4.6		
	3		5.0		
	4		5.3		
	5		1.1		
	6		1.1		
	7		1.1		
	8		5.3		
1	9		3.2		
	10		2.6		
	11		0		
	12		2.5		
	13		2.0		
	14		0.7		
	15		0		
	16		X		
	17		0		
	18		2.0		
<hr/>					
	1		1.0		
	2		0		
	3		0		
	4		X		
2	5		0		
	6		3.7		
	7		7.2		
	8		3.5		
	9		1.3		
<hr/>					
	1		2.6		
	2		2.8		
	3		X		
3	4		5.3		
	5		X		
	6		0		
	7		5.3		

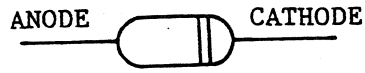
	PIN	VHF	VHF	UHF	REMARKS
NBR		LOW	HI		
	8		2.6		
	9		0		
	10		4.9		
3	11		0		
	12		2.3		
	13		X		
	14		5.3		
	15		X		
	16		X		
<hr/>					
	1		X		
	2		2.3		
	3		2.3		
4	4		0		
	5		X		
	6		7.7		
	7		16.2		
	8		7.2		
<hr/>					
	1		7.2		* F
5	2		0.2		
	3		5.3		
<hr/>					
			* PIN CONNECTION		
			F		
					
			1 2 3		

IC	PIN	VHF	VHF	UHF	REMARKS
NBR		LOW	HI		
	1		X		
	2		0.1		
	3		0.1		
	4		0.1		
	5		0.1		
	6		0.1		
	7		0.1		
	8		0.1		
	9		0.1		
	10		0		
	11		X		
	12		X		
	13		X		
	14		0.1		
	15		0		
201	16		0		
	17		0		
	18		0		
	19		4.9		
	20		2.5		
	21		2.4		
	22		4.9		
	23		4.9		
	24		4.9		
	25		0.9		
	26		0.9		
	27		2.9		
	28		X		
	29		X		
	30		X		
	31		2.9		
	32		2.9		
	33		2.9		
	34		2.9		
	35		2.9		
	36		2.9		

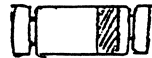
IC	PIN	VHF	VHF	UHF	REMARKS
NBR		LOW	HI		
	37		2.9		
	38		2.9		
	39		2.9		
	40		2.9		
	41		X		
	42		X		
	43		X		
	44		X		
	45		X		
	46		X		
	47		X		
	48		X		
	49		X		
	50		X		
	51		X		
201	52		X		
	53		X		
	54		X		
	55		X		
	56		X		
	57		X		
	58		X		
	59		X		
	60		X		
	61		X		
	62		X		
	63		0		
	64		5.5		
	65		4.9		
	66		X		
	67		X		
	68		4.9		
	69		X		
	70		0		
	71		4.3		
	72		X		

5. SEMICONDUCTOR LEAD IDENTIFICATION

DIODE

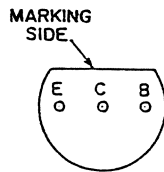


MC301	1N4003	ISV113	LSS85
HZ6C-3	HZ9A2	LSV132	LS1555
HZ18-2			

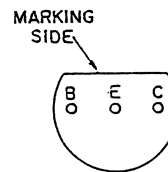


DLS1585

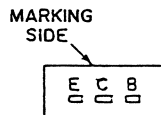
TRANSISTOR



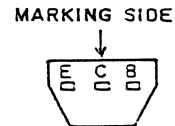
2SC1730
LAP1200



2SC2026

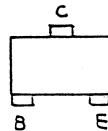


2SD471



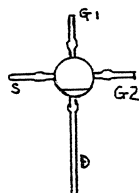
2SA1175
2SC2668
2SC2669
2SC2785

(TOP VIEW)



2SA1162
2SC2712

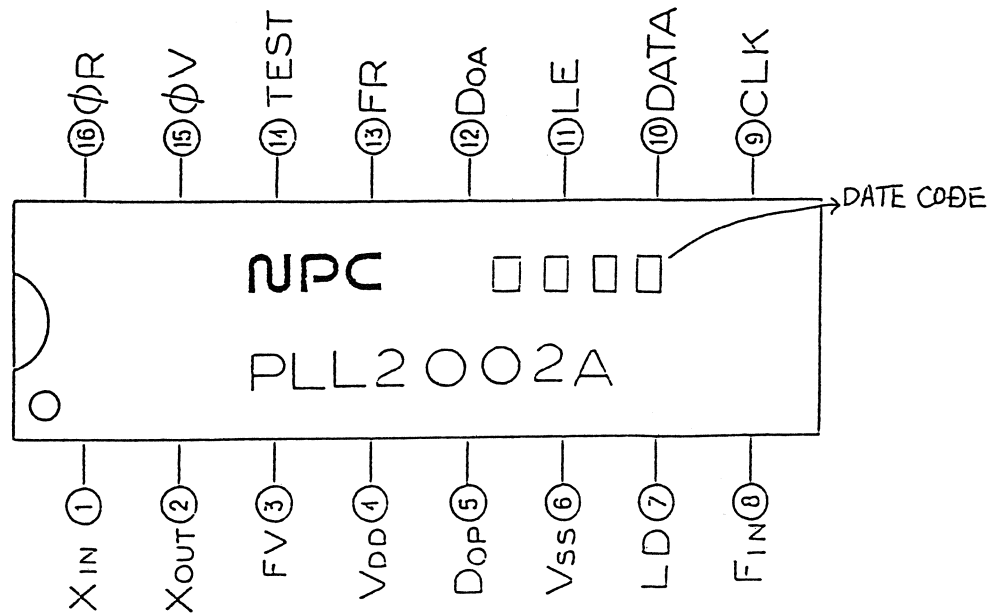
FET



3SK88-K

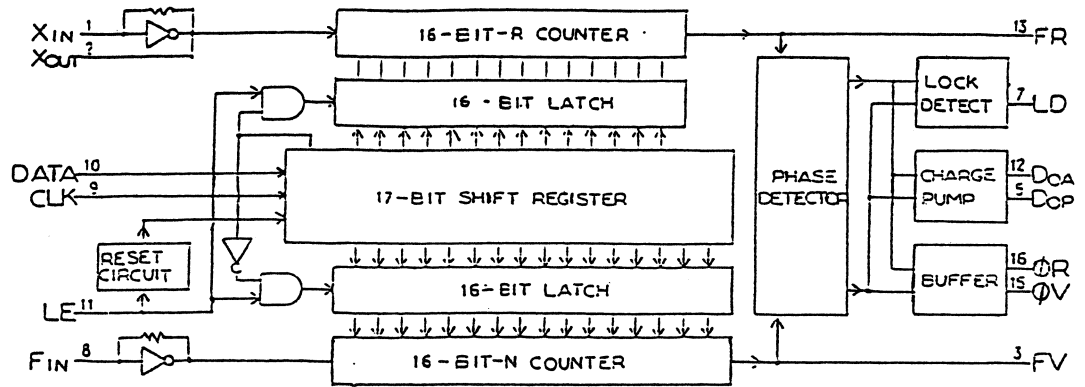
PLL 2002A

PIN CONNECTIONS



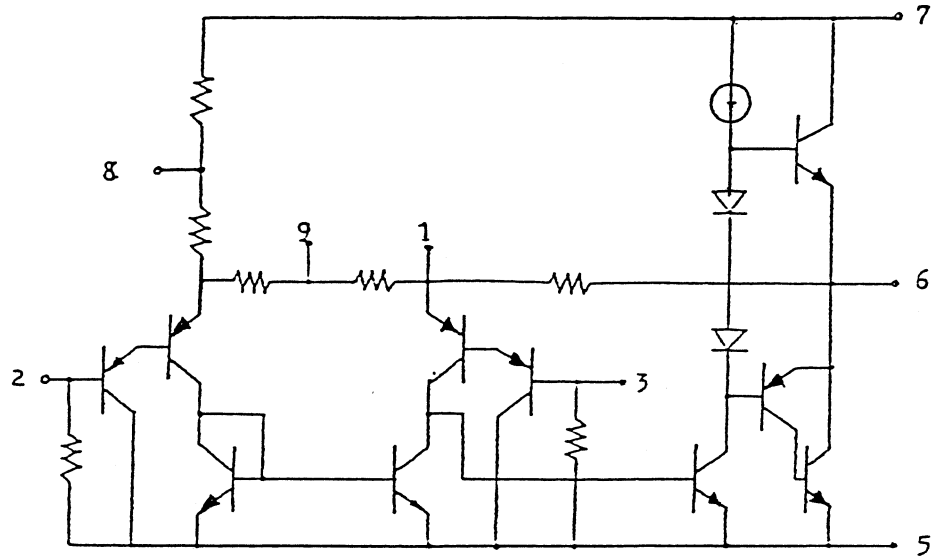
TOP VIEW

BLOCK DIAGRAM

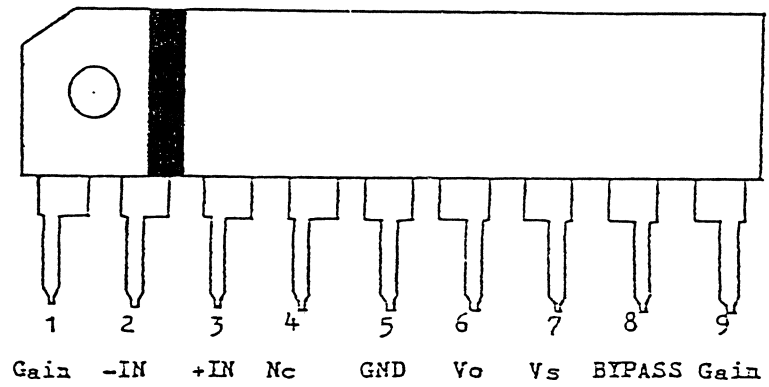


NJM386S-L

CIRCUIT DIAGRAM

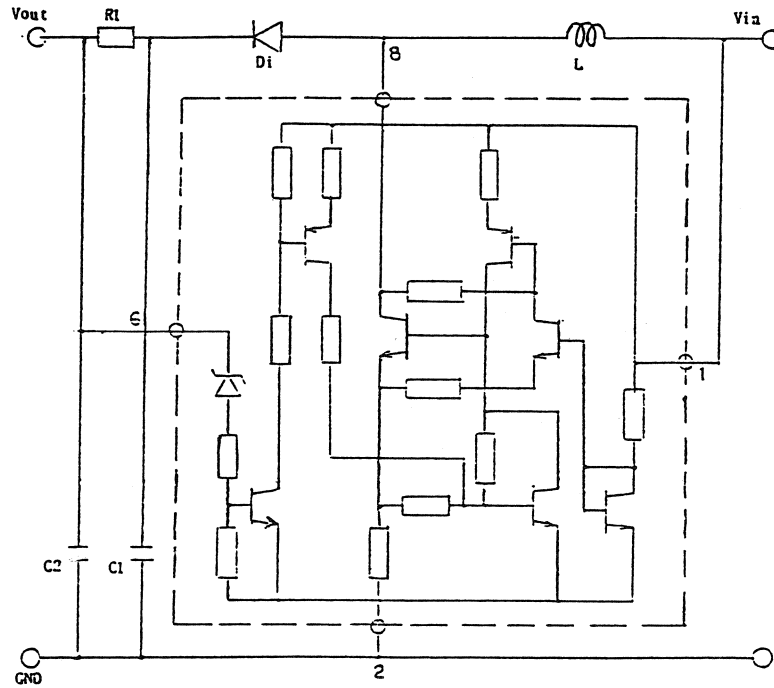


PIN LINE

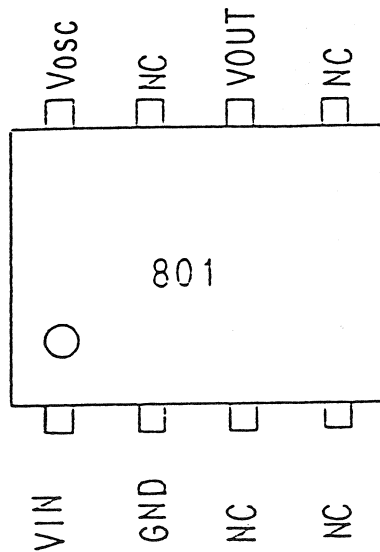


TK11801M

CIRCUIT DIAGRM



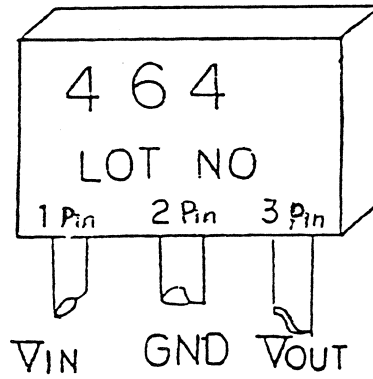
PIN LINE



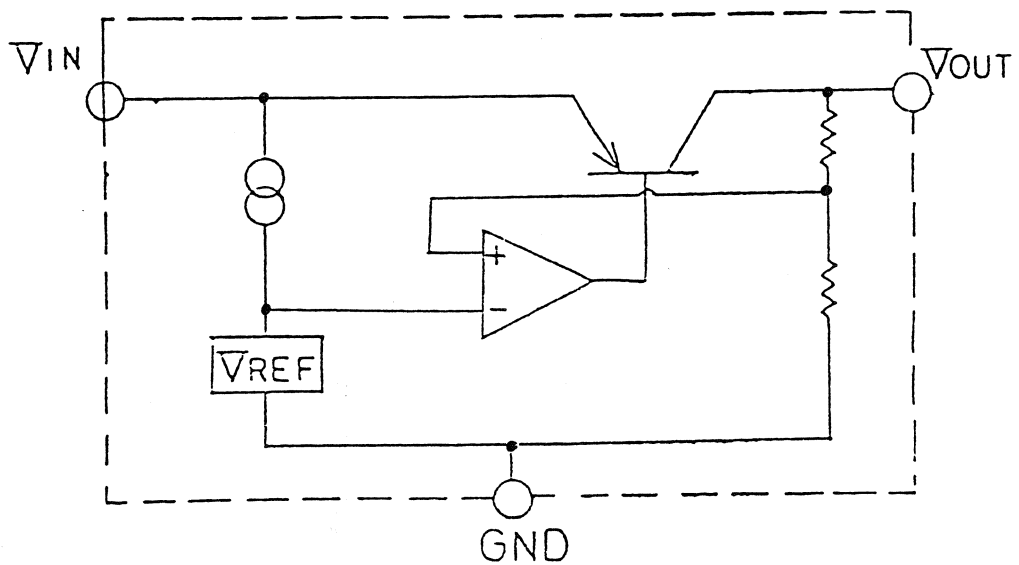
TOP VIEW

TK10464

PIN LINE

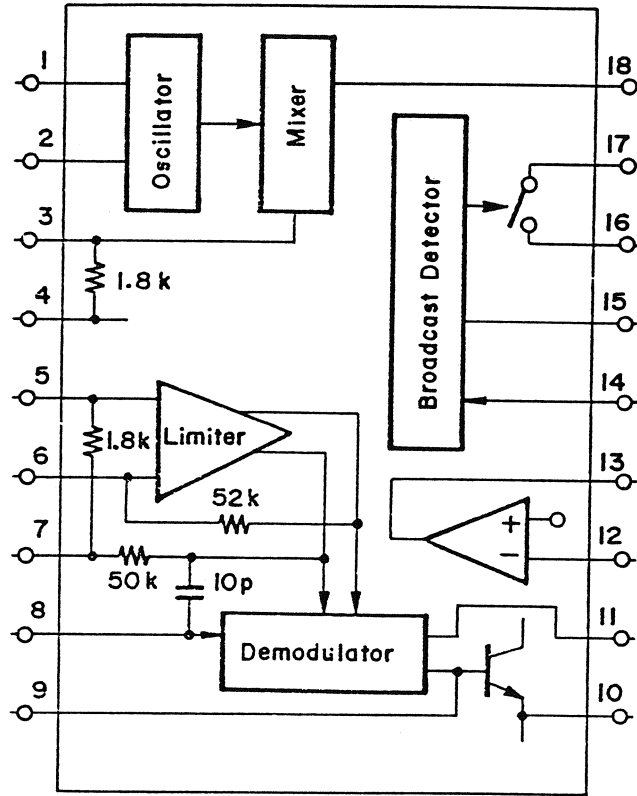


BLOCK DIAGRAM

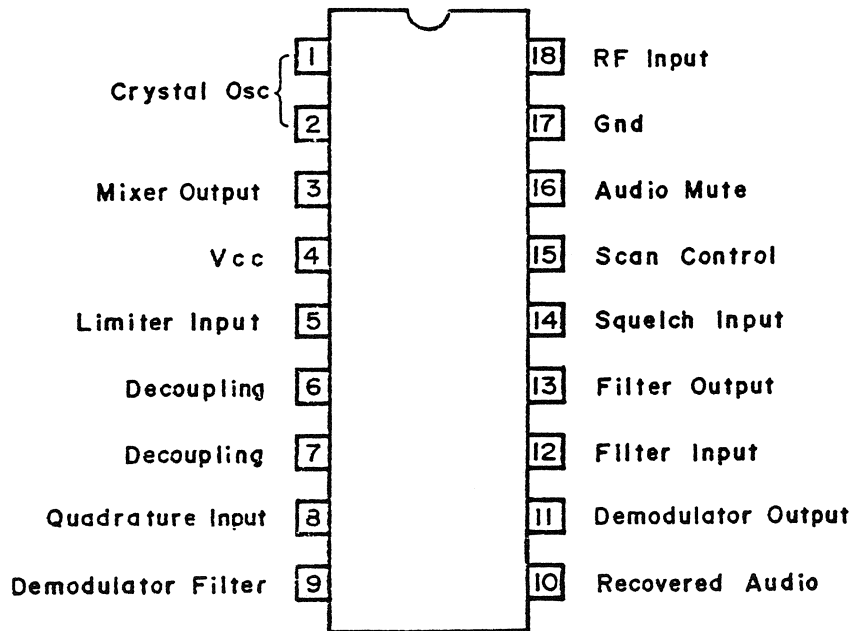


MC3359P

BLOCK DIAGRAM

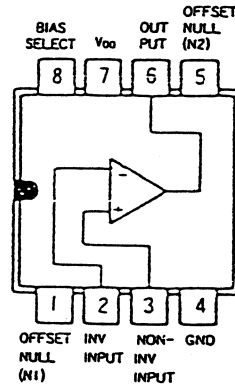


PIN CONNECTION



TLC 271CP

PIN LINE

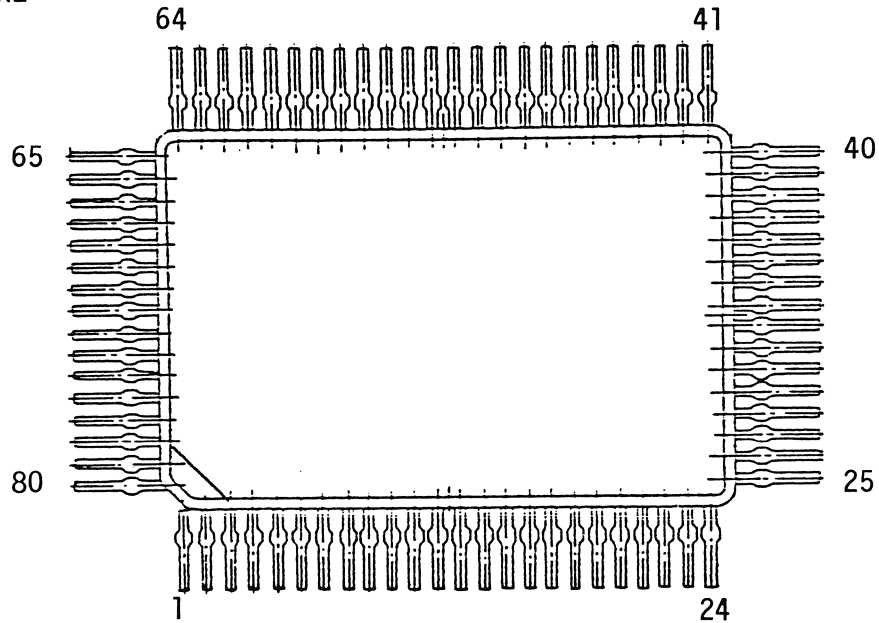


APPEARANCE



UC 1081

PIN LINE



<u>PIN NO.</u>	<u>DESCRIPTION (I/O PORT)</u>
1	Not Used
2 - 9	Key Matrix
10	Beep Output with Pin 68: "L"
11 - 13	Not Used
14 - 16	Key Matrix
17	Input for Key Lock
18	"L": Rest release, "H": Reset mode
19	Test Terminal
20 - 21	Clock Oscillator
22	VCC (+4.5V - +5.5V)
23	"L": HALT mode, "H": HALT release
24 - 26	LCD Bias Setting Terminal
27	LCD Common Terminal
28 - 30	Not Used
31 - 39	LCD Segment Terminal
40 - 62	Not Used
63	Ground
64	Power fall Detector
65	"H": Scan Stop, "L": Scan start
66 - 67	Not Used
68	Battery Low ("L": Beep out at pin 10, "H": Beep OFF)
69	Not Used
70	Band Selector (VHF)
71	Band Selector (UHF)
72 - 77	Not Used
78	PLL Control (Enable)
79	PLL Control (Data)
80	PLL Control (Clock)

6. PARTS PRICE LIST

(MODEL)
UB106AN

RC-50XL

(PARTS CODE)	(DESCRIPTION)		(SYMBOL)	(Q'TY)	(LIST PRICE)
BATY0057001	RUBBER ANTENNA	AT-057 TAV-002603-0-A0	AT951	1	\$ 24.347
BCAM114716Z	CAPACITOR:ELECTROLYTIC	470UF 10V M C-128	C202	1	\$ 0.587
BCAT111026Z	CAPACITOR:ELECTPOLYTIC	1000UF 10V M C-136	C050	1	\$ 0.851
BCAT313316Z	CAPACITOR:ELECTROLYTIC	330UF 16V M C-136	C085	1	\$ 0.528
BCCC811804Z	CAPACITOR:CERAMIC	18PF 50V J CH	C010	1	\$ 0.139
BCCC812204Z	CAPACITOR:CERAMIC	22PF 50V J CH	C013	1	\$ 0.139
BCCC813304Z	CAPACITOR:CERAMIC	33PF 50V J CH	C031	1	\$ 0.139
BCCC815091Z	CAPACITOR:CERAMIC	5PF 50V C CH	C001	1	\$ 0.139
			C060	1	\$ 0.139
			C090	1	\$ 0.139
BCCC816804Z	CAPACITOR:CERAMIC	68PF 50V J CH	C068	1	\$ 0.165
BCCC817092Z	CAPACITOR:CERAMIC	7PF 50V D CH	C004	1	\$ 0.139
			C097	1	\$ 0.139
BCCC818092Z	CAPACITOR:CERAMIC	8PF 50V D CH	C007	1	\$ 0.139
BCCF811591Z	CAPACITOR:CERAMIC	1.5PF 50V C CK	C006	1	\$ 0.205
BCCF812091Z	CAPACITOR:CERAMIC	2PF 50V C CK	C059	1	\$ 0.139
BCCG811002Z	CAPACITOR:CERAMIC	10PF 50V D SL	C016	1	\$ 0.119
BCCG811014Z	CAPACITOR:CERAMIC	100PF 50V J SL	C005	1	\$ 0.119
BCCG811214Z	CAPACITOR:CEPAMIC	120PF 50V J SL	C014	1	\$ 0.119
			C018	1	\$ 0.119
			C021	1	\$ 0.119
BCCG811504Z	CAPACITOR:CERAMIC	15PF 50V J SL	C129	1	\$ 0.119
BCCG814704Z	CAPACITOR:CERAMIC	47PF 50V J SL	C117	1	\$ 0.119
			C118	1	\$ 0.119
BCCG815604Z	CAPACITOR:CERAMIC	56PF 50V J SL	C002	1	\$ 0.119
BCCU812704Z	CAPACITOR:CERAMIC	27PF 50V J UJ	C003	1	\$ 0.139

(MODEL)
UB106AN

BC-50XL

(PARTS CODE)	(DESCRIPTION)	(SYMBOL)	(Q'TY)	(LIST PRICE)
BCCU814704Z	CAPACITOR:CERAMIC	47PF 50V J UJ	C017 1	\$ 0.139
BCCU815604Z	CAPACITOR:CERAMIC	56PF 50V J UJ	C023 1	\$ 0.139
BCCU817092Z	CAPACITOR:CERAMIC	7PF 50V D UJ	C011 1	\$ 0.139
BCCW814705Z	CAPACITOR:CERAMIC	47PF 50V K WK	C058 1	\$ 0.139
BCER514796Z	CAPACITOR:ELECTROLYTIC	4.7UF 25V M C-095	C051 1	\$ 0.218
			C054 1	\$ 0.218
BCER664796Z	CAPACITOR:ELECTROLYTIC	4.7UF 35V M C-095	C075 1	\$ 0.330
			C218 1	\$ 0.330
BCER813396Z	CAPACITOR:ELECTROLYTIC	3.3UF 50V M C-095	C047 1	\$ 0.218
BCER902206Z	CAPACITOR:ELECTROLYTIC	22UF 6.3V M C-095	C035 1	\$ 0.330
BCER904706Z	CAPACITOR:ELECTROLYTIC	47UF 6.3V M C-095	C053 1	\$ 0.330
BCGC511035Z	CAPACITOR:SEMI CONDUCTOR(SR)	0.01UF 25V K	C008 1	\$ 0.191
			C022 1	\$ 0.191
			C029 1	\$ 0.191
			C038 1	\$ 0.191
			C039 1	\$ 0.191
			C063 1	\$ 0.191
			C080 1	\$ 0.191
			C083 1	\$ 0.191
			C086 1	\$ 0.191
			C089 1	\$ 0.191
			C099 1	\$ 0.191
			C112 1	\$ 0.191
BCGC511045Z	CAPACITOR:SEMI-CONDUCTOR(SR)	0.1UF 25V K	C074 1	\$ 0.429
BCGC512235Z	CAPACITOR:SEMI-CONDUCTOR(SR)	0.022UF 25V K	C062 1	\$ 0.205
			C087 1	\$ 0.205

(MODEL)
UB106AN

BC-50XL

(PARTS CODE) (DESCRIPTION)	(SYMBOL)	(Q'TY)	(LIST PRICE)
BCGC512235Z CAPACITOR:SEMI-CONDUCTOR(SR) 0.022UF 25V K	C088	1	\$ 0.205
	C091	1	\$ 0.205
	C127	1	\$ 0.205
BCGC513325Z CAPACITOR:SEMI-CONDUCTOR(SR) 0.0033UF 25V K	C009	1	\$ 0.165
	C040	1	\$ 0.165
	C098	1	\$ 0.165
	C101	1	\$ 0.165
	C123	1	\$ 0.165
BCGC514725Z CAPACITOR:SEMI-CONDUCTOR(SR) 0.0047UF 25V K	C020	1	\$ 0.165
	C043	1	\$ 0.165
	C048	1	\$ 0.165
BCGC514735Z CAPACITOR:SEMI-CONDUCTOR(SR) 0.047UF 25V K	C033	1	\$ 0.284
	C036	1	\$ 0.284
BCGC516825Z CAPACITOR:SEMI-CONDUCTOR(SR) 0.0068UF 25V K	C096	1	\$ 0.165
BCGC516835Z CAPACITOR:SEMI-CONDUCTOR(SR) 0.068UF 25V K	C052	1	\$ 0.356
BCKB811025Z CAPACITOR:CERAMIC 0.001UF 50V K YB(B)	C024	1	\$ 0.125
	C025	1	\$ 0.125
	C027	1	\$ 0.125
	C028	1	\$ 0.125
	C030	1	\$ 0.125
	C055	1	\$ 0.125
	C064	1	\$ 0.125
	C065	1	\$ 0.125
	C066	1	\$ 0.125
	C071	1	\$ 0.125
C093	1	\$ 0.125	

(MODEL)
UB106AN

RC-50XL

(PARTS CODE) (DESCRIPTION)

(SYMBOL) (Q'TY) (LIST PRICE)

BCKB811025Z	CAPACITOR:CERAMIC	0.001UF 50V K YB(B)	C115	1	\$ 0.125
			C126	1	\$ 0.125
			C501	1	\$ 0.125
BCKB811215Z	CAPACITOR:CERAMIC	120PF 50V K YB(B)	C012	1	\$ 0.125
			C072	1	\$ 0.125
BCKB812215Z	CAPACITOR:CERAMIC	220PF 50V K YB(B)	C037	1	\$ 0.125
			C056	1	\$ 0.125
			C079	1	\$ 0.125
			C125	1	\$ 0.125
BCKB814715Z	CAPACITOR:CERAMIC	470PF 50V K YB(B)	C015	1	\$ 0.125
			C032	1	\$ 0.125
			C041	1	\$ 0.125
			C042	1	\$ 0.125
BCKB816815Z	CAPACITOR:CERAMIC	680PF 50V K YB(B)	C057	1	\$ 0.125
BCKD811026Z	CAPACITOR:CERAMIC	0.001UF 50V M YD	C114	1	\$ 0.119
			C119	1	\$ 0.119
			C121	1	\$ 0.119
BCQJ122244Z	CAPACITOR:MYLAR(MKT)	0.22UF 100V J C-168	C100	1	\$ 1.452
BCSB114706Z	CAPACITOR:TANTALUM	47UF 10V M C-089	C069	1	\$ 2.831
BCSB314796Z	CAPACITOR:TANTALUM	4.7UF 16V M C-089	C073	1	\$ 0.950
BCSB661086Z	CAPACITOR:TANTALUM	0.1UF 35V M C-089	C034	1	\$ 0.627
			C044	1	\$ 0.627
BCSB662286Z	CAPACITOR:TANTALUM	0.22UF 35V M C-089	C019	1	\$ 0.627
BCSB663386Z	CAPACITOR:TANTALUM	0.33UF 35V M C-089	C084	1	\$ 0.627
BCTY0064200	CAPACITOR:TRIMMER	CT-064 ECR-GA020E11	CT002	1	\$ 1.782
			CT003	1	\$ 1.782

(MODEL)
UB106AN

PC-50XL

(PARTS CODE) (DESCRIPTION)	(SYMBOL)	(Q'TY)	(LIST PRICE)
BCTY0064350 CAPACITOR:TRIMMER	CT-064 ECR-GA035M11	CT001 1	\$ 1.782
BCTY0065500 CAPACITOR:TRIMMER	CT-065 T203Z50DE 50PF	CT004 1	\$ 1.610
BCXE813325Z C:CERAMIC M/L (3216) TAPE	0.0033UF 50V K C(B)	C208 1	\$ 0.205
BCXF811020Z C:CERAMIC M/L (3216) TAPE	0.001UF 50V Z F	C213 1	\$ 0.185
BCXF811030Z C:CERAMIC M/L (3216) TAPE	0.01UF 50V Z F	C203 1	\$ 0.191
		C209 1	\$ 0.191
BCXF812230Z C:CERAMIC M/L (3216) TAPE	0.022UF 50V Z F	C204 1	\$ 0.205
BCXF813930Z C:CERAMIC M/L (3216) TAPE	0.039UF 50V Z F	C211 1	\$ 0.277
BCXF814730Z C:CERAMIC M/L (3216) TAPE	0.047UF 50V Z F	C207 1	\$ 0.277
BCXP813304Z C:CERAMIC M/L (3216) TAPE	33PF 50V J UJ	C205 1	\$ 0.218
		C206 1	\$ 0.218
BCXR511050Z CAPACITOR:CERAMIC M/L CHIP	1UF 25V Z F C-134 TAPE	C201 1	\$ 1.115
		C210 1	\$ 1.115
		C215 1	\$ 1.115
BCXR514740Z CAPACITOR:CERAMIC M/L CHIP	0.47UF 25V Z F C-134 TAPE	C216 1	\$ 1.115
BDAY0060003 DIODE	1N4003	D024 1	\$ 0.119
		D028 1	\$ 0.119
BDAY0090001 DIODE	MC-301	D012 1	\$ 0.931
BDAY0179003 DIODE:ZENER	HZ6C3L	D202 1	\$ 0.264
BDAY0181001 DIODE	1S1555	D001 1	\$ 0.119
		D008 1	\$ 0.119
		D009 1	\$ 0.119
		D015 1	\$ 0.119
		D022 1	\$ 0.119
		D026 1	\$ 0.119
		D027 1	\$ 0.119

86/11/10

UCA PARTS PRICE LIST (PPL045B)

PAGE 6

(MODEL)
UB106AN

BC-50XL

(PARTS CODE) (DESCRIPTION)		(SYMBOL)	(Q'TY)	(LIST PRICE)
BDAY0222001 DIODE	1K34A	D207	1	\$ 0.376
BDAY0269023 DIODE:ZENER	HZ-9C3	D010	1	\$ 0.238
BDAY0278001 DIODE	1SV113	D004	1	\$ 0.818
		D005	1	\$ 0.818
		D013	1	\$ 0.818
		D023	1	\$ 0.818
BDAY0325001 DIODE:VARICAP	1SV132	D003	1	\$ 0.851
		D014	1	\$ 0.851
		D017	1	\$ 0.851
		D018	1	\$ 0.851
BDAY0326001 DIODE	1SS85	D006	1	\$ 0.403
		D007	1	\$ 0.403
BDAY0339001 DIODE	DLS1585 TAPING	D201	1	\$ 0.165
		D203	1	\$ 0.165
		D204	1	\$ 0.165
		D205	1	\$ 0.165
		D206	1	\$ 0.165
BDBA1162124 TRANSISTOR	DP-036 2SA1162-Y TAPING	Q205	1	\$ 0.403
BDBA1175316 TRANSISTOR	DP-034 2SA1175-EF	Q008	1	\$ 0.462
		Q009	1	\$ 0.462
		Q025	1	\$ 0.462
BDBC1730111 TRANSISTOR	DR-269 2SC1730-L	Q019	1	\$ 0.990
		Q020	1	\$ 0.990
BDBC2026110 TRANSISTOR	DR-323 2SC2026-K	Q001	1	\$ 1.584
		Q002	1	\$ 1.584
BDBC2668114 TRANSISTOR	DR-341 2SC2668-0	Q005	1	\$ 0.317

(MODEL)
UB106AN

BC-50XL

(PARTS CODE) (DESCRIPTION)		(SYMBOL)	(Q'TY)	(LIST PRICE)
BDBC2668114 TRANSISTOR	DB-341 2SC2668-0	Q015	1	\$ 0.317
		Q021	1	\$ 0.317
BDBC2669114 TRANSISTOR	DB-376 2SC2669-0	Q003	1	\$ 0.350
BDBC2712124 TRANSISTOR	DB-381 2SC2712-Y TAPING	Q201	1	\$ 0.350
		Q202	1	\$ 0.350
		Q203	1	\$ 0.350
		Q204	1	\$ 0.350
		Q206	1	\$ 0.350
		Q207	1	\$ 0.350
		Q208	1	\$ 0.350
		Q210	1	\$ 0.350
		Q212	1	\$ 0.350
		Q213	1	\$ 0.350
BDBC2785318 TRANSISTOR	DB-347 2SC2785-HF	Q007	1	\$ 0.403
		Q010	1	\$ 0.403
		Q011	1	\$ 0.403
		Q014	1	\$ 0.403
		Q016	1	\$ 0.403
		Q023	1	\$ 0.403
BDBD0471111 TRANSISTOR	DB-411 2SD471-L	Q013	1	\$ 1.254
		Q012	1	\$ 0.627
BDBD1020108 TRANSISTOR	DB-422 2SD1020-H	Q004	1	\$ 0.442
BDBZ0521001 TRANSISTOR	DB-521 LSP1200	Q022	1	\$ 0.442
		Q006	1	\$ 3.293
BDCC0088110 FIELD EFFECT TRANSISTOR	DC-114 3SK88-K	Q006	1	\$ 3.293
BDEY0335001 INTEGRATED CIRCUIT	MC3359P	IC001	1	\$ 3.788

86/11/10

UCA PARTS PRICE LIST (PPL045P)

PAGE 8

(MODEL)
UB106AN

PC-50XL

(PARTS CODE)	(DESCRIPTION)		(SYMBOL)	(Q'TY)	(LIST PRICE)
BDEY0680002	INTEGRATED CIRCUIT	UC1081A	IC201	1	\$ 23.034
BDEY0683001	INTEGRATED CIRCUIT	NJM386S-L	IC002	1	\$ 3.623
BDEY0812001	INTEGRATED CIRCUIT	TK10464	IC005	1	\$ 2.858
BDEY0813001	INTEGRATED CIRCUIT	TK11801M-1	IC202	1	\$ 3.458
BDEY0826001	INTEGRATED CIRCUIT	TLC271CP	IC004	1	\$ 10.666
BDEY0868001	INTEGRATED CIRCUIT	PLL2002A1	IC003	1	\$ 26.664
BDFY0012001	THERMISTOR	TD5-C310D2-H	TH201	1	\$ 0.442
BDLY0013001	LIQUID CRYSTAL DISPLAY	DL-013 LR188A-C	DP501	1	\$ 5.267
BFLY0195001	FILTER:CRYSTAL	FL-195	FT001	1	\$ 11.906
BFLY0200001	FILTER:CERAMIC	FL-200 SFP450D	FT002	1	\$ 5.927
BJKY0131001	JACK	JK-131 HSJ0289	J003	1	\$ 0.792
BJKY0135001	JACK	JK-135 HEC0470-01-230	J002	1	\$ 1.056
BJKY0205001	JACK	JK-205 BNC-RM 105-M	J501	1	\$ 2.765
BJKY0235011	JACK	JK-235 11P	J001	1	\$ 1.188
BLBY0225001	COIL	LB-225 IFT-41K7-H5	L005	1	\$ 0.601
			L006	1	\$ 0.601
BLBY0253001	COIL	LB-253 21K7M(R12-9022A)	L013	1	\$ 0.568
BLBY0442001	COIL	LB-442 L-2M7-T1	L009	1	\$ 0.700
			L011	1	\$ 0.700
BLBY0443001	COIL	LB-443 L-2S7-T	L015	1	\$ 0.653
BLCY0195001	COIL	LC-195 L-1S7-T	L008	1	\$ 0.640
			L010	1	\$ 0.640
BLCY0198001	COIL	LC-198 L-2S7-T(R-12E364X)	L014	1	\$ 0.561
BLDY0085001	COIL	LD-085 BRH-2.5*4.0*0.7	L002	1	\$ 0.092
			L021	1	\$ 0.092
BLEY0189001	COIL	LE-189 DS.4 1 1/2T	L007	1	\$ 0.139

(MODEL)
UB106AN

PC-50XL

(PARTS CODE) (DESCRIPTION)		(SYMBOL)	(Q'TY)	(LIST PRICE)
BLEY0201001 COIL	LE-201 D2.4 3 1/2T	L003	1	\$ 0.139
BLEY0293001 COIL	LE-293 D6.96 1/2T	L012	1	\$ 0.046
BLEY0296001 COIL	LE-296 D6.35 1/2T	L019	1	\$ 0.046
		L020	1	\$ 0.046
BLFY0089001 COIL	LF-089 312AN-1040Z	L201	1	\$ 2.633
BLZY0046228 INDUCTOR:MOLDED	LZ-046 0.22UH	L016	1	\$ 0.416
		L017	1	\$ 0.416
BLZY0046568 INDUCTOR:MOLDED	LZ-046 0.56UH	L001	1	\$ 0.416
BPHY0025AAZ PC BOARD:MAIN	PH-025AA	B001	1	\$ 10.243
BPHY0032AAZ PC BOARD:KEY BOARD	PH-032AA	B201	1	\$ 11.669
BQXY0145001 CRYSTAL	QX-145 10.400	X001	1	\$ 9.148
BRFC181044Z RESISTOR:CARBON FIXED CHIP	100K 1/8W J TAPING	R213	1	\$ 0.086
		R214	1	\$ 0.086
		R215	1	\$ 0.086
		R216	1	\$ 0.086
		R220	1	\$ 0.086
		R221	1	\$ 0.086
		R224	1	\$ 0.086
		R226	1	\$ 0.086
		R227	1	\$ 0.086
		R229	1	\$ 0.086
BRFC181047Z RESISTOR:CARBON FIXED CHIP	100K 1/8W G TAPING	R212	1	\$ 0.165
BRFC181227Z RESISTOR:CARBON FIXED CHIP	1.2K 1/8W G TAPING	R209	1	\$ 0.165
BRFC181844Z RESISTOR:CARBON FIXED CHIP	180K 1/8W J TAPING	R202	1	\$ 0.086
BRFC182224Z RESISTOR:CARBON FIXED CHIP	2.2K 1/8W J TAPING	R219	1	\$ 0.086
		R223	1	\$ 0.086

(MODEL)
UE106AN

RC-5CXL

(PARTS CODE)	(DESCRIPTION)		(SYMBOL)	(Q'TY)	(LIST PRICE)
BRFC182234Z	RESISTOR:CARBON FIXED CHIP	22K 1/8W J TAPING	R225	1	\$ 0.086
BRFC182244Z	RESISTOR:CARBON FIXED CHIP	220K 1/8W J TAPING	R203	1	\$ 0.086
BRFC182254Z	RESISTOR:CARBON FIXED CHIP	2.2M 1/8W J TAPING	R204	1	\$ 0.086
BRFC183924Z	RESISTOR:CARBON FIXED CHIP	3.9K 1/8W J TAPING	R206	1	\$ 0.086
BRFC184734Z	RESISTOR:CARBON FIXED CHIP	47K 1/8W J TAPING	R201	1	\$ 0.086
			R218	1	\$ 0.086
BRFC184794Z	RESISTOR:CARBON FIXED CHIP	4.7 1/8W J TAPING	R232	1	\$ 0.086
BRFC185614Z	RESISTOR:CARBON FIXED CHIP	560 1/8W J TAPING	R205	1	\$ 0.086
BRFC185627Z	RESISTOR:CARBON FIXED CHIP	5.6K 1/8W G TAPING	R210	1	\$ 0.165
BRFC185634Z	RESISTOR:CARBON FIXED CHIP	56K 1/8W J TAPING	R222	1	\$ 0.086
			R231	1	\$ 0.086
BRFC186637Z	RESISTOR:CARBON FIXED CHIP	68K 1/8W G TAPING	R211	1	\$ 0.165
BRFC188234Z	RESISTOR:CARBON FIXED CHIP	82K 1/8W J TAPING	R217	1	\$ 0.086
			R233	1	\$ 0.086
BRPB181024Z	RESISTOR:CARBON AXIAL LEAD	1K 1/8W J	R071	1	\$ 0.053
BRPB181534Z	RESISTOR:CARBON AXIAL LEAD	15K 1/8W J	R031	1	\$ 0.053
BRPB182244Z	RESISTOR:CARBON AXIAL LEAD	220K 1/8W J	R078	1	\$ 0.053
BRPB183334Z	RESISTOR:CARBON AXIAL LEAD	33K 1/8W J	RC63	1	\$ 0.053
BRPB184724Z	RESISTOR:CARBON AXIAL LEAD	4.7K 1/8W J	R029	1	\$ 0.053
BRPB188224Z	RESISTOR:CARBON AXIAL LEAD	8.2K 1/8W J	RC34	1	\$ 0.053
BRPB611004Z	RESISTOR:CARBON AXIAL LEAD	10 1/6W J	R018	1	\$ 0.066
BRPB611094Z	RESISTOR:CARBON AXIAL LEAD	1 1/6W J	R092	1	\$ 0.066
BRPB613314Z	RESISTOR:CARBON AXIAL LEAD	330 1/6W J	R111	1	\$ 0.066
BRPB618294Z	RESISTOR:CARBON AXIAL LEAD	8.2 1/6W J	R001	1	\$ 0.066
BRSJ101004Z	RESISTOR:METAL OXIDE	10 1W J	R093	1	\$ 0.277
BRSJ106804Z	RESISTOR:METAL OXIDE	68 1W J	R054	1	\$ 0.277

86/11/10

UCA PARTS PRICE LIST (PPL045B)

PAGE 11

(MODEL)
UB106AN

BC-50XL

(PARTS CODE)	(DESCRIPTION)		(SYMBOL)	(Q'TY)	(LIST PRICE)
BRTY0528223	RESISTOR:SEMI-FIXED	RT-528 22KF	VR001	1	\$ 0.851
BRUB611014Z	RESISTOR:CARBON FORMED VERT	100 1/6W J	R004	1	\$ 0.066
			R108	1	\$ 0.066
BRUB611024Z	RESISTOR:CARBON FORMED VERT	1K 1/6W J	R035	1	\$ 0.066
			R036	1	\$ 0.066
			R045	1	\$ 0.066
BRUB611034Z	RESISTOR:CARBON FORMED VERT	10K 1/6W J	R047	1	\$ 0.066
			R056	1	\$ 0.066
			R067	1	\$ 0.066
			R070	1	\$ 0.066
BRUB611044Z	RESISTOR:CARBON FORMED VERT	100K 1/6W J	R003	1	\$ 0.066
			R042	1	\$ 0.066
			R072	1	\$ 0.066
			R088	1	\$ 0.066
			R089	1	\$ 0.066
			R094	1	\$ 0.066
BRUB611224Z	RESISTOR:CARBON FORMED VERT	1.2K 1/6W J	R066	1	\$ 0.066
BRUB611244Z	RESISTOR:CARBON FORMED VERT	120K 1/6W J	R028	1	\$ 0.066
BRUB611504Z	RESISTOR:CARBON FORMED VERT	15 1/6W J	R002	1	\$ 0.066
BRUB611514Z	RESISTOR:CARBON FORMED VERT	150 1/6W J	R074	1	\$ 0.066
BRUB611524Z	RESISTOR:CARBON FORMED VERT	1.5K 1/6W J	R014	1	\$ 0.066
			R080	1	\$ 0.066
BRUB611844Z	RESISTOR:CARBON FORMED VERT	180K 1/6W J	R090	1	\$ 0.066
BRUB611854Z	RESISTOR:CARBON FORMED VERT	1.8M 1/6W J	R107	1	\$ 0.066
BRUB612204Z	RESISTOR:CARBON FORMED VERT	22 1/6W J	R049	1	\$ 0.066
BRUB612214Z	RESISTOR:CARBON FORMED VERT	220 1/6W J	R007	1	\$ 0.066

(MODEL)
UB106AN

BC-50XL

(PARTS CODE)	(DESCRIPTION)			(SYMBOL)	(Q'TY)	(LIST PRICE)
BRUB612214Z	RESISTOR:CARBON FORMED VERT	220	1/6W J	R021	1	\$ 0.066
BRUB612224Z	RESISTOR:CARBON FORMED VERT	2.2K	1/6W J	R053	1	\$ 0.066
BRUB612234Z	RESISTOR:CARBON FORMED VERT	22K	1/6W J	R025	1	\$ 0.066
				R026	1	\$ 0.066
				R032	1	\$ 0.066
				R033	1	\$ 0.066
				R043	1	\$ 0.066
BRUB612244Z	RESISTOR:CARBON FORMED VERT	220K	1/6W J	R079	1	\$ 0.066
				R085	1	\$ 0.066
				R110	1	\$ 0.066
BRUB612254Z	RESISTOR:CARBON FORMED VERT	2.2M	1/6W J	R105	1	\$ 0.066
BRUB612294Z	RESISTOR:CARBON FORMED VERT	2.2	1/6W J	R051	1	\$ 0.066
BRUB612724Z	RESISTOR:CARBON FORMED VERT	2.7K	1/6W J	R016	1	\$ 0.066
				R020	1	\$ 0.066
				R030	1	\$ 0.066
				R057	1	\$ 0.066
				P104	1	\$ 0.066
BRUB612744Z	RESISTOR:CARBON FORMED VERT	270K	1/6W J	R058	1	\$ 0.066
BRUB613314Z	RESISTOR:CARBON FORMED VERT	330	1/6W J	R019	1	\$ 0.066
				R068	1	\$ 0.066
BRUB613334Z	RESISTOR:CARBON FORMED VERT	33K	1/6W J	R005	1	\$ 0.066
				R008	1	\$ 0.066
				RC09	1	\$ 0.066
				R015	1	\$ 0.066
				R022	1	\$ 0.066
				R023	1	\$ 0.066

(MODEL)
UB106AN

RC-50XL

(PARTS CODE)	(DESCRIPTION)			(SYMBOL)	(Q'TY)	(LIST PRICE)
BRUB613334Z	RESISTOR:CARBON FORMED VERT	33K	1/6W J	R040	1	\$ 0.066
				R062	1	\$ 0.066
				R091	1	\$ 0.066
BRUB613344Z	RESISTOR:CARBON FORMED VERT	330K	1/6W J	R010	1	\$ 0.066
				R012	1	\$ 0.066
				R038	1	\$ 0.066
				RC86	1	\$ 0.066
BRUB613914Z	RESISTOR:CARBON FORMED VERT	390	1/6W J	R106	1	\$ 0.066
BRUB613934Z	RESISTOR:CARBON FORMED VERT	39K	1/6W J	R037	1	\$ 0.066
				R044	1	\$ 0.066
BRUB613944Z	RESISTOR:CARBON FORMED VERT	390K	1/6W J	R006	1	\$ 0.066
BRUB614704Z	RESISTOR:CARBON FORMED VERT	47	1/6W J	R103	1	\$ 0.066
BRUB614724Z	RESISTOR:CARBON FORMED VERT	4.7K	1/6W J	R024	1	\$ 0.066
				R055	1	\$ 0.066
				R065	1	\$ 0.066
				R076	1	\$ 0.066
				RC77	1	\$ 0.066
				R095	1	\$ 0.066
				R102	1	\$ 0.066
BRUB614734Z	RESISTOR:CARBON FORMED VERT	47K	1/6W J	RC82	1	\$ 0.066
				R109	1	\$ 0.066
BRUB615634Z	RESISTOR:CARBON FORMED VERT	56K	1/6W J	R039	1	\$ 0.066
BRUB615694Z	RESISTOR:CARBON FORMED VERT	5.6	1/6W J	R050	1	\$ 0.066
BRUB616804Z	RESISTOR:CARBON FORMED VERT	68	1/6W J	R073	1	\$ 0.066
BRUB616814Z	RESISTOR:CARBON FORMED VERT	680	1/6W J	R052	1	\$ 0.066
				R101	1	\$ 0.066

(MODEL)
UB106AN

RC-50XL

(PARTS CODE)	(DESCRIPTION)		(SYMBOL)	(Q'TY)	(LIST PRICE)
BRUB616824Z	RESISTOR:CARBON FORMED VERT	6.2K 1/6W J	R069	1	\$ 0.066
BRUB616844Z	RESISTOR:CARBON FORMED VERT	680K 1/6W J	R017	1	\$ 0.066
			R041	1	\$ 0.066
BRUB618204Z	RESISTOR:CARBON FORMED VERT	82 1/6W J	R059	1	\$ 0.066
BRUB618224Z	RESISTOR:CARBON FORMED VERT	8.2K 1/6W J	RC64	1	\$ 0.066
BRUB618244Z	RESISTOR:CARBON FORMED VERT	820K 1/6W J	RC11	1	\$ 0.066
BRVY0604001	RESISTOR:VARIABLE	RV-604 RK9A11 100KA W/SW	VR502	1	\$ 5.201
BRVY0605001	RESISTOR:VARIABLE	RV-605 RK9A10 100KA	VR501	1	\$ 2.831
BSPY0138001	SPEAKER	SP-138	SP501	1	\$ 8.864
BSWY0527001	SWITCH:SLIDE	SW-527 SLVW12BP-2.8	S201	1	\$ 1.313
BWZY0430001	WIRE:ASS'Y	WZ-430 63 W/P	WA951	1	\$ 4.475
BYYY0052002	JUMPER WIRE	YY-052 7.5MM	JP001	1	\$ 0.020
BYYY0393001	KEY BOARD RUBBER	YY-393	S502	1	\$ 3.293
BYYY0396001	INTER CONNECTOR	YY-396 H8.1*L22.5*W1.0	YI951	1	\$ 1.379
BYYY0397001	DUMMY CONNECTOR	YY-397 H8.1*L22.5*W1.0	YI952	1	\$ 0.627
CUHD005021Z	WIRE	UL 1007 #26 5- 50- 3 YEL		1	\$ 0.066
CUHF013022Z	WIRE	UL 1007 #26 5-130- 5 BLU		1	\$ 0.092
CUHK004511Z	WIRE	UL 1007 #26 3- 45- 3 BLK		1	\$ 0.066
CUHK006021Z	WIRE	UL 1007 #26 5- 60- 3 BLK		1	\$ 0.066
				1	\$ 0.066
CUHK006544Z	WIRE	UL 1007 #26 10- 65-10 BLK		1	\$ 0.073
CUHK007044Z	WIRE	UL 1007 #26 10- 70-10 BLK		1	\$ 0.073
CUHK008011Z	WIRE	UL 1007 #26 3- 80- 3 BLK		1	\$ 0.073
CUHK010011Z	WIRE	UL 1007 #26 3-100- 3 BLK		1	\$ 0.086
ECHR217254C	CASE:REAR (COMP)	**		1	\$ 2.158
GBSG400539Z	BUSHING:POLYETHYLENE	POLYETHY		1	\$ 0.139

(MODEL)
UB106AN

BC-50XL

(PARTS CODE)	(DESCRIPTION)	(SYMBOL)	(Q'TY)	(LIST PRICE)
GCHF217253Z	CASE:FRONT	ABS,DARK BROWN	1	\$ 2.158
GCHT317255Z	CASE:TOP	ABS,DARK BROWN SILK	1	\$ 0.799
GCHZ317256Z	COVER:BATTERY	ABS,DARK BROWN	1	\$ 0.746
GCSZ217257Z	CASE:BATTERY	ABS,BLACK	1	\$ 0.964
GETC417276Z	PLUG:EARPHONE	P.P BLACK	1	\$ 0.145
GNBP417258Z	BUTTON:PUSH	ABS,ORANGE	2	\$ 0.165
GNBS417259Z	KNOB:SLIDE	ABS,GRAYISH BROWN	1	\$ 0.165
GNBY417261Z	KNOB	ABS,SATIN CR	2	\$ 0.462
HCSF417270Z	CHASSIS	SECC 1.0T	1	\$ 0.812
HETC417275Z	BELT CLIP	SUS 0.8T	1	\$ 3.161
HPSP414199B	TERMINAL:BATTERY (P)	PRSP 0.2T NI	1	\$ 0.587
HPSP417262A	BATTERY CONTACT(L)	PRSP 0.3T NI	1	\$ 0.931
HPSP417263A	BATTERY CONTACT(R)	PRSP 0.3T NI	1	\$ 0.931
HPSP417264Z	BATTERY TERMINAL(L)	PRSP 0.3T	1	\$ 0.403
HPSP417265Z	BATTERY TERMINAL(R)	PRSP 0.3T	1	\$ 0.376
HSDP416132Z	SHIELD PLATE	SPT 0.3T	1	\$ 0.000
HSDP417283Z	SHIELD PLATE	ALP 0.1T NON OIL	1	\$ 0.601
HSDP417295Z	SHIELD PLATE	ALP 0.1T NON OIL	1	\$ 0.660
HSDP417454A	PLATE ESD	COPPER 0.1T	1	\$ 0.257
HSDP418266Z	SHIELD PLATE	ALP 0.1T NONOIL	1	\$ 0.139
HSDP418267Z	SHIELD PLATE	SPTE 0.3T NONOIL	1	\$ 0.185
KDPT417272Z	PLATE:KEYPAD	PVC,BLACK 0.3T SILK PRINT	1	\$ 1.445
KDPZ417271Z	WINDOW:DISPLAY	POLYCARBO 1.0T SILK PRINT	1	\$ 1.307
KDPZ417287Z	PLATE:BLIND	PVC BLACK	1	\$ 0.277
KDPZ417416Z	PLATE:BLIND	PVC 0.3T	2	\$ 0.073
LBSG417277Z	BUSHING KNOB	NEOPRENE RUBBER	2	\$ 0.073

(MODEL)
UB106AN

RC-50XL

(PARTS CODE)	(DESCRIPTION)	(SYMBOL)	(Q'TY)	(LIST PRICE)
NSPC417266Z	SPRING BATTERY(A)	SUS D0.6	2	\$ 0.125
NSPC417267Z	SPRING BATTERY(B)	SUS D0.6	1	\$ 0.125
NSPC417268Z	SPRING BATTERY(C)	SUS D0.6	1	\$ 0.145
NSPC417269Z	SPRING BATTERY(D)	SWP D0.6 NI	1	\$ 0.139
PLBF417031Z	LABEL:FCC	TETRON FILM 0.05T	1	\$ 0.205
RBLD415133Z	BLIND	NYLON GAUZE	1	\$ 0.191
RCUM417273Z	CUSHION	MOLTPLANE 15*22*10T	1	\$ 0.086
RCUM417274Z	CUSHION	MOLTPRENE	1	\$ 0.145
RCUM417394Z	CUSHION	MOLTPRENE 39*10*5T	1	\$ 0.218
RCUM417402Z	CUSHION	MOLTPRENE 40*45*3T	1	\$ 0.218
RETC416041Z	SPACER	PVC 0.3T BLACK	1	\$ 0.073
RETC416089Z	SPACER	PVC 0.2T	2	\$ 0.026
RETC416943Z	DOUBLE-SIDED TAPE	NITTO 571 42X42	1	\$ 1.610
RZEB417364Z	INSULATION PLATE	PVC 0.25T	1	\$ 1.102
RZEB417400Z	INSULATION PLATE	PVC 50*36*0.1T	1	\$ 0.231
RZEB418268Z	INSULATION PLATE	PVC 0.25T	1	\$ 0.092
SSCW133005N	SCREW:FLAT HD +	M3X5 NI	2	\$ 0.020
SSCW192606N	SCREW:BIND HD +	M2.6X6 NI	2	\$ 0.020
SSCW802005N	SCREW:P TIGHT BIND HD+	D2X5 NI	10	\$ 0.007
SSCW803008N	SCREW:P TIGHT BIND HD +	D3X8 NI	1	\$ 0.066
			2	\$ 0.066
SSCW803012N	SCREW:P TIGHT BIND HD +	D3X12 NI	4	\$ 0.020
TSTD0200006	SPRING PLATE:KNOB	D6	2	\$ 0.389
UBUD011062A	OWNER'S MANUAL	**	1	\$ 0.568
UBUD316546Z	APPLICATION FOAM	PAPER	1	\$ 0.964
UBUD318408Z	ACCESSORY ORDER FOAM	PAPER	1	\$ 0.700

86/11/10

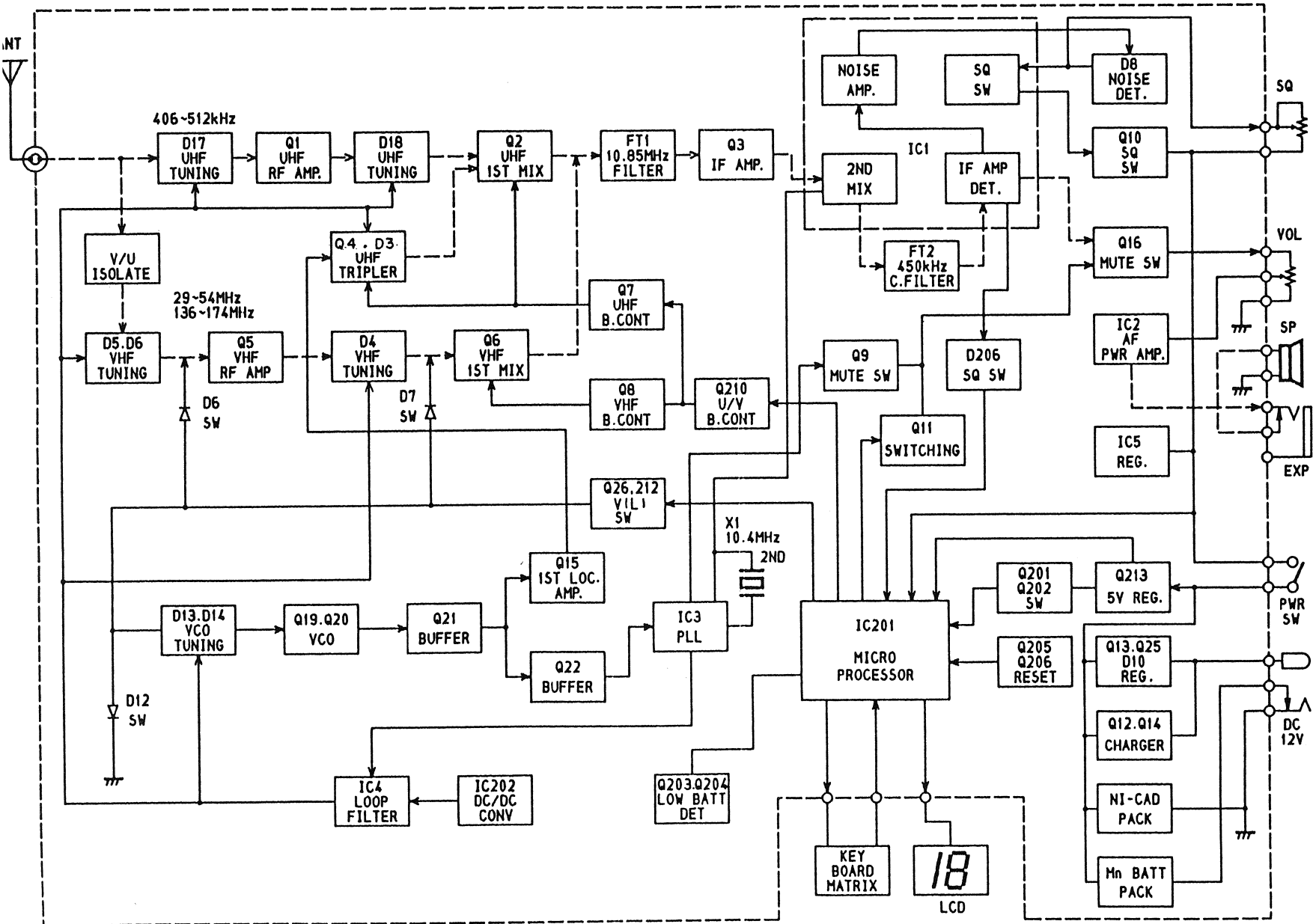
UCA PARTS PRICE LIST (PPL045B)

PAGE 17

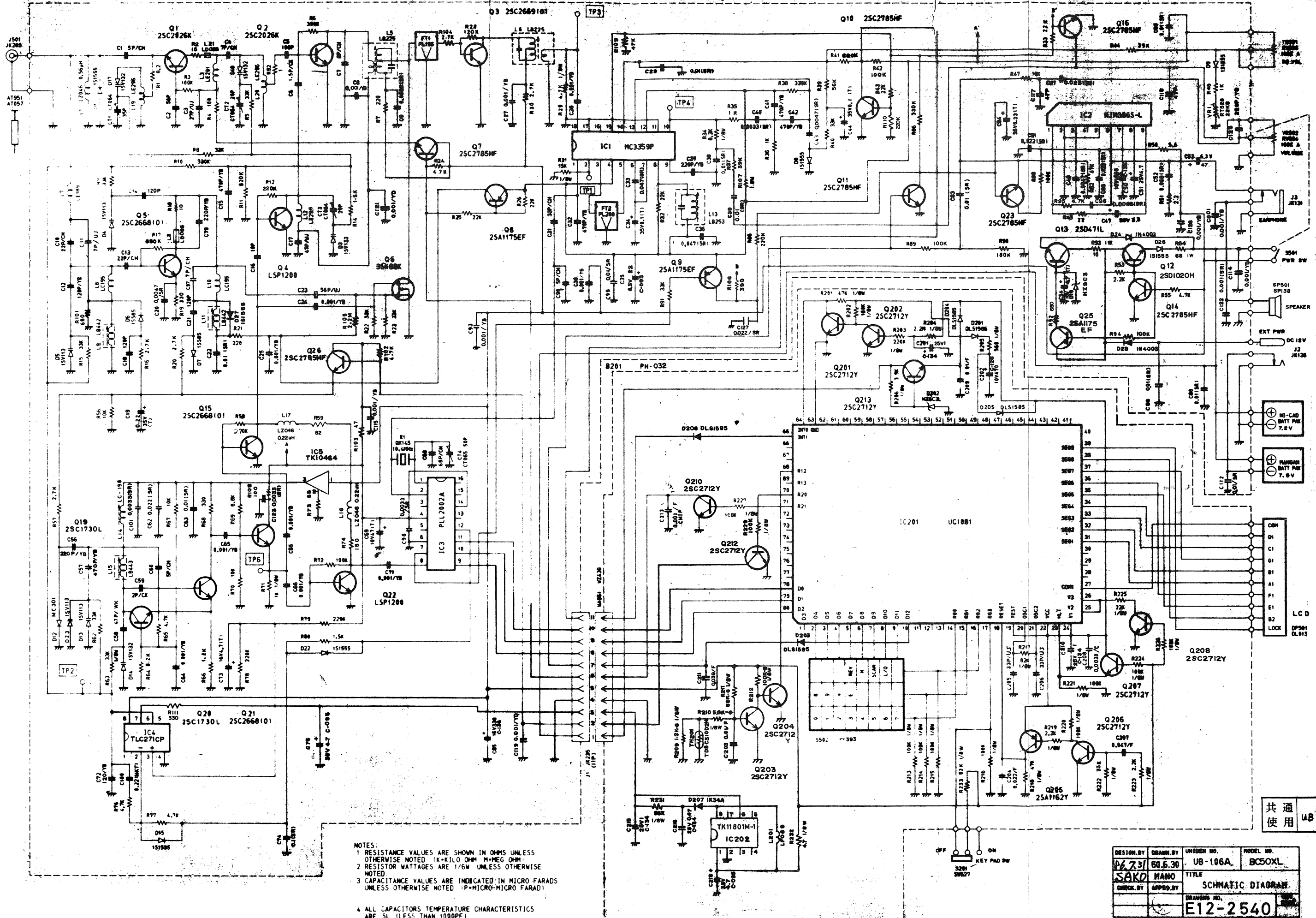
(MODEL)
UB106AN BC-50XL

(PARTS CODE) (DESCRIPTION)	(SYMBOL)	(Q'TY)	(LIST PRICE)
UBUD416547Z ORDER FORM		1	\$ 0.277
UTUD416815A PRODUCT REGISTRATION CARD	PAPER	1	\$ 1.148
VNYL1122500 VINYL BAG	120X250X0.05T	1	\$ 0.073
VNYL1123000 VINYL BAG	120X300X0.05T	1	\$ 0.046
VNYL2254042 VINYL BAG	250X400X420X0.07T	0.08333	\$ 0.607
VNYL3070800 VINYL BAG	70X80X0.1T	1	\$ 0.046
WBXH317280Z DISPLAY BOX	**	1	\$ 1.525
WCTZ417281A SHIPPING CARTON BOX	**	0.08333	\$ 3.161
WSFH217278Z STYROFOAM PAD(BOTTOM)	**	1	\$ 1.386
WSFH417279Z STYROFOAM PAD(TOP)	102*192*12T	1	\$ 0.277
	TOTAL >>>>>>>>>		314.172

7. TECHNICAL DRAWINGS



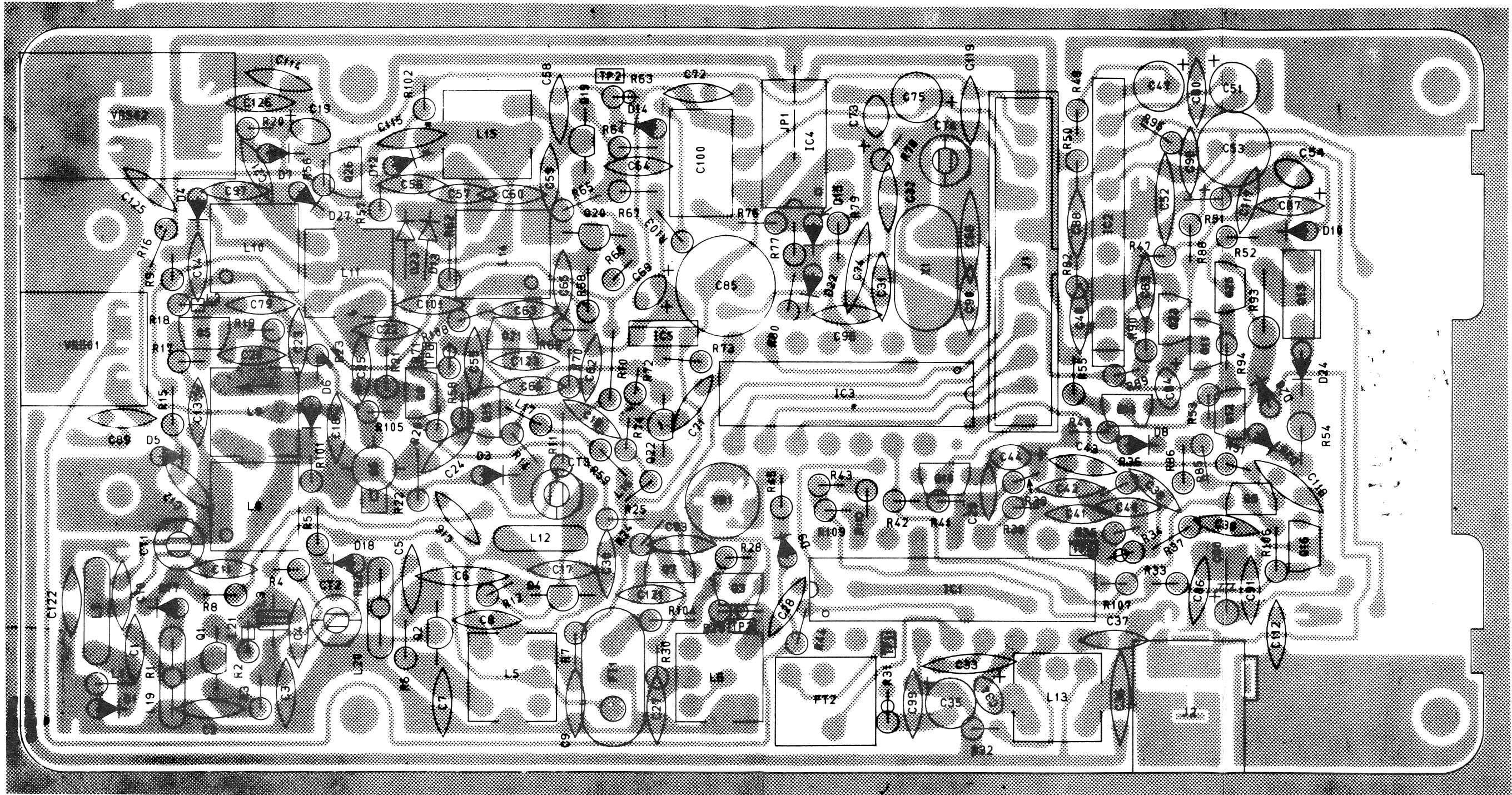
BLOCK DIAGRAM



- NOTES:
1. RESISTANCE VALUES ARE SHOWN IN OHMS UNLESS OTHERWISE NOTED (K=KILO OHM M=MEG OHM)
 2. RESISTOR WATTAGES ARE 1/6W UNLESS OTHERWISE NOTED
 3. CAPACITANCE VALUES ARE INDICATED IN MICRO FARADS UNLESS OTHERWISE NOTED (P=MICRO-MICRO FARAD)
 4. ALL CAPACITORS TEMPERATURE CHARACTERISTICS ARE 5L (LESS THAN 1000PF)

共用 UB-106 共

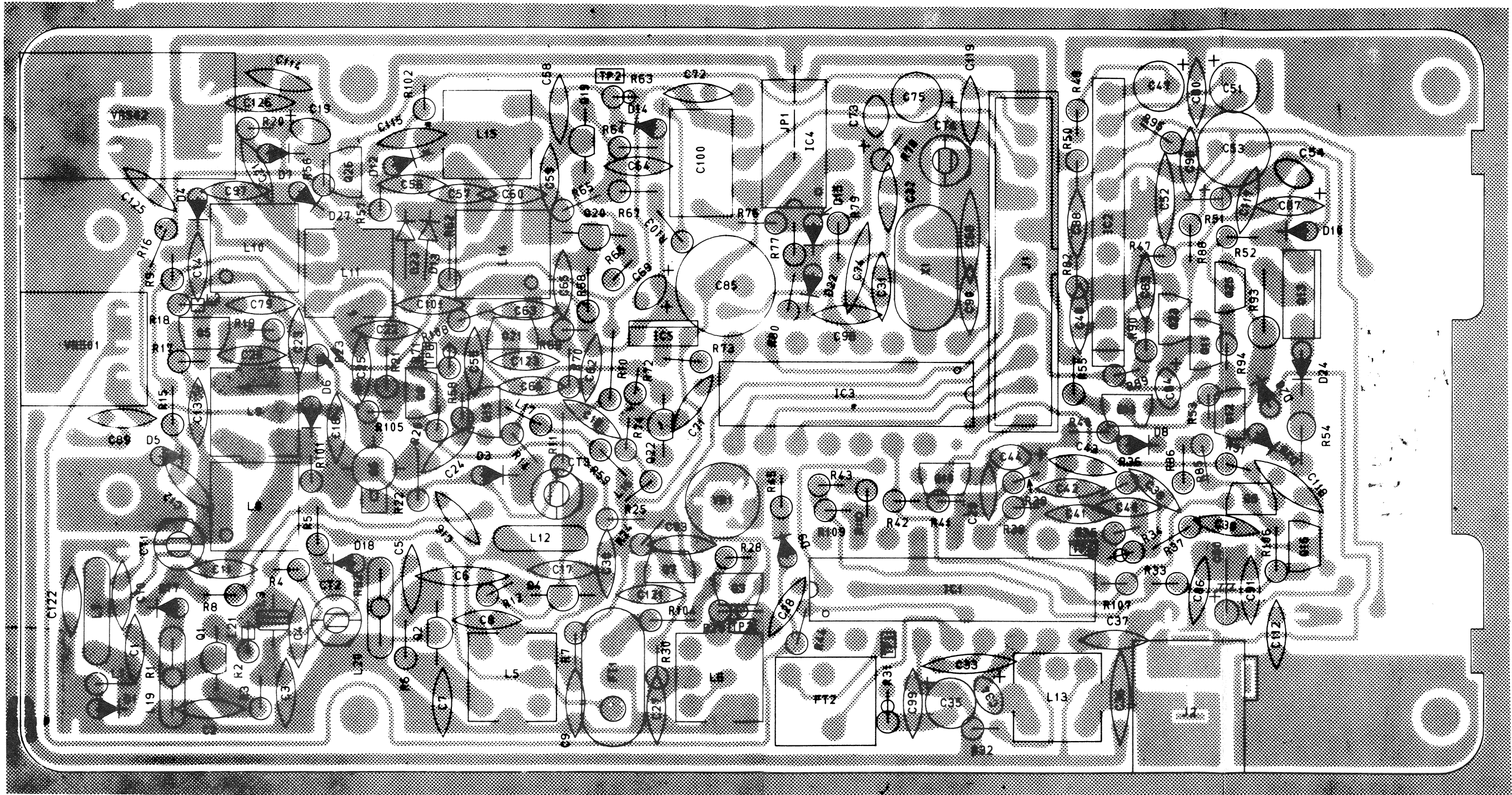
DESIGN BY	DRWN BY	UNIDEN NO.	MODEL NO.
P673/	BO.6.30	UB-106A	BC50XL
S&K	HANO	TITLE	SCHMATIC DIAGRAM
CHECK BY	APPROV BY	DRAWING NO.	E12-2540



NOTES:

1. RESISTANCE VALUES ARE SHOWN IN OHMS UNLESS OTHERWISE NOTED. (K-KILO OHM, M-MEG OHM)
2. RESISTOR WATTAGES ARE 1/6W UNLESS OTHERWISE NOTED.
3. CAPACITANCE VALUES ARE INDICATED IN MICRO FARADS UNLESS OTHERWISE NOTED. (P-MICRO-MICRO FARAD)
4. ALL CAPACITORS TEMPERATURE CHARACTERISTICS ARE SL UNLESS OTHERWISE NOTED.

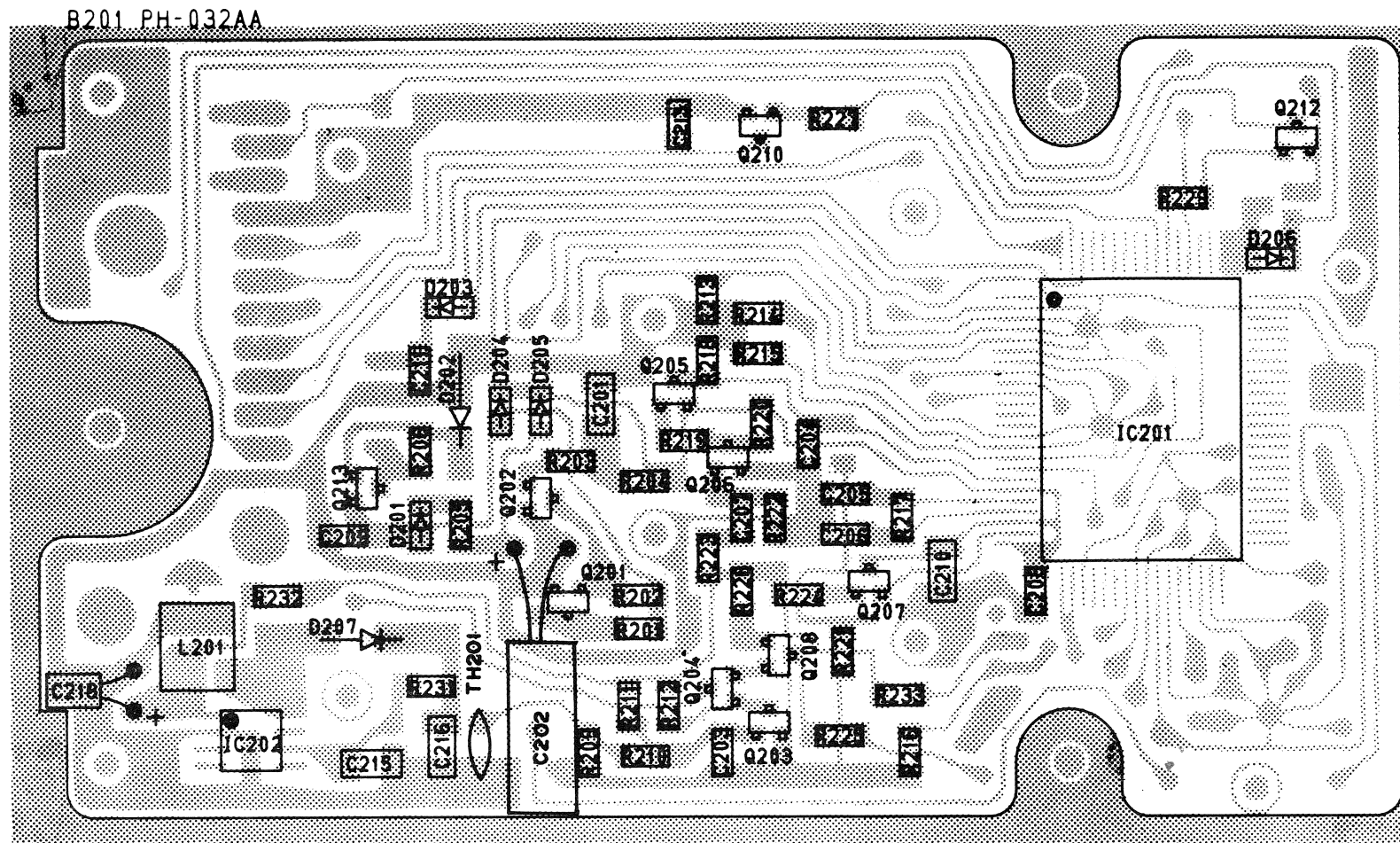
DESIGN BY	DRAWN BY	UNIDEN NO.	MODEL NO.
61.7.31	61.7.9	UB-106A	BC50XL
CHECK BY	APPRO. BY	TITLE MAIN PCB PARTS ASSEMBLY TOP VIEW	
		DRAWING NO.	REV. MARK
		E22-6457	



NOTES:

1. RESISTANCE VALUES ARE SHOWN IN OHMS UNLESS OTHERWISE NOTED. (K=KILO OHM, M=MEG OHM)
2. RESISTOR WATTAGES ARE 1/6W UNLESS OTHERWISE NOTED.
3. CAPACITANCE VALUES ARE INDICATED IN MICRO FARADS UNLESS OTHERWISE NOTED. (P=MICRO-MICRO FARAD)
4. ALL CAPACITORS TEMPERATURE CHARACTERISTICS ARE SL UNLESS OTHERWISE NOTED.

DESIGN BY	DRAWN BY	UNIDEN NO.	MODEL NO.
61.7.31	61.7.9	UB-106A	BC50XL
CHECK BY	APPRO. BY	TITLE MAIN PCB PARTS ASSEMBLY TOP VIEW	
		DRAWING NO.	REV. MARK
		E22-6457	



R201	47K	CHIP
R202	180K	CHIP
R203	220K	CHIP
R204	2.2M	CHIP
R205	560	CHIP
R206	3.9K	CHIP
R209	1.2K-G	CHIP
R210	5.6K-G	CHIP
R211	68K-G	CHIP
R212	100K-G	CHIP
R213	100K	CHIP
R214	100K	CHIP
R215	100K	CHIP
R216	100K	CHIP
R217	82K	CHIP
R218	47K	CHIP
R219	2.2K	CHIP
R220	100K	CHIP
R221	100K	CHIP
R222	33K	CHIP
R223	2.2K	CHIP
R224	100K	CHIP
R225	22K	CHIP
R226	100K	CHIP
R227	100K	CHIP
R229	100K	CHIP
R231	56K	CHIP
R232	4.7	CHIP
R233	82K	CHIP

C201	25V1 C-134	CHIP
C202	10V470	C-128
C203	0.01/F	CHIP
C204	0.022/F	CHIP
C205	33P/UJ	CHIP
C206	33P/UJ	CHIP
C207	0.047/F	CHIP
C208	0.0033/C	CHIP
C209	0.01/F	CHIP
C210	25V1 C-134	CHIP
C211	0.039/F	CHIP
C213	0.001/F	CHIP
C215	25V1 C-134	CHIP
C216	25V0.47	CHIP C-134
C218	35V4.7	C-095

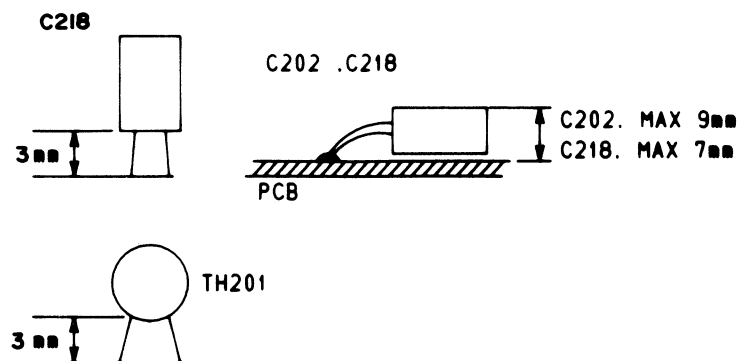
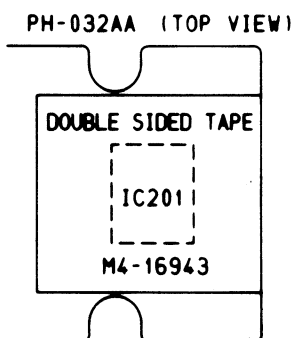
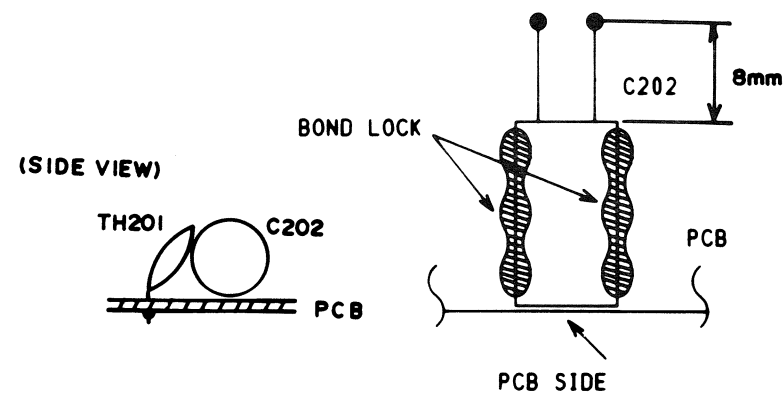
IC201	UC1081
IC202	TK11801M-1

L201	LF089
------	-------

Q201	25C2712Y	CHIP
Q202	25C2712Y	CHIP
Q203	25C2712Y	CHIP
Q204	25C2712Y	CHIP
Q205	25A1162Y	CHIP
Q206	25C2712Y	CHIP
Q207	25C2712Y	CHIP
Q208	25C2712Y	CHIP
Q210	25C2712Y	CHIP
Q212	25C2712Y	CHIP
Q213	25C2712Y	CHIP

D201	DLS1585	CHIP
D202	HZ6C3L	
D203	DLS1585	CHIP
D204	DLS1585	CHIP
D205	DLS1585	CHIP
D206	DLS1585	CHIP
D207	1K34A	

TH201	TD5C310D2H
-------	------------



- NOTES:
- RESISTANCE VALUES ARE SHOWN IN OHMS UNLESS OTHERWISE NOTED. (K-KILO OHM, M-MEG OHM)
 - RESISTOR WATTAGES ARE 1/8W UNLESS OTHERWISE NOTED.
 - CAPACITANCE VALUES ARE INDICATED IN MICRO FARADS UNLESS OTHERWISE NOTED. (P-MICRO-MICRO FARAD)
 - CHIP CAPACITORS TEMPERATURE CHARACTERISTICS UNLESS OTHERWISE NOTED.

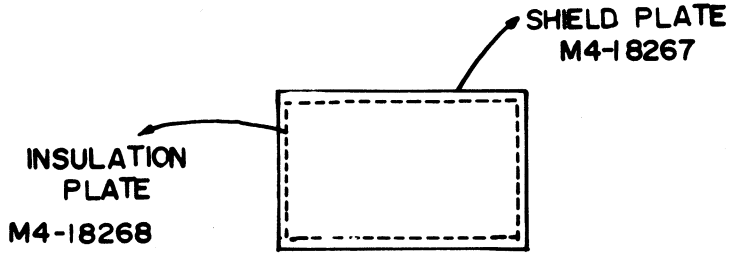
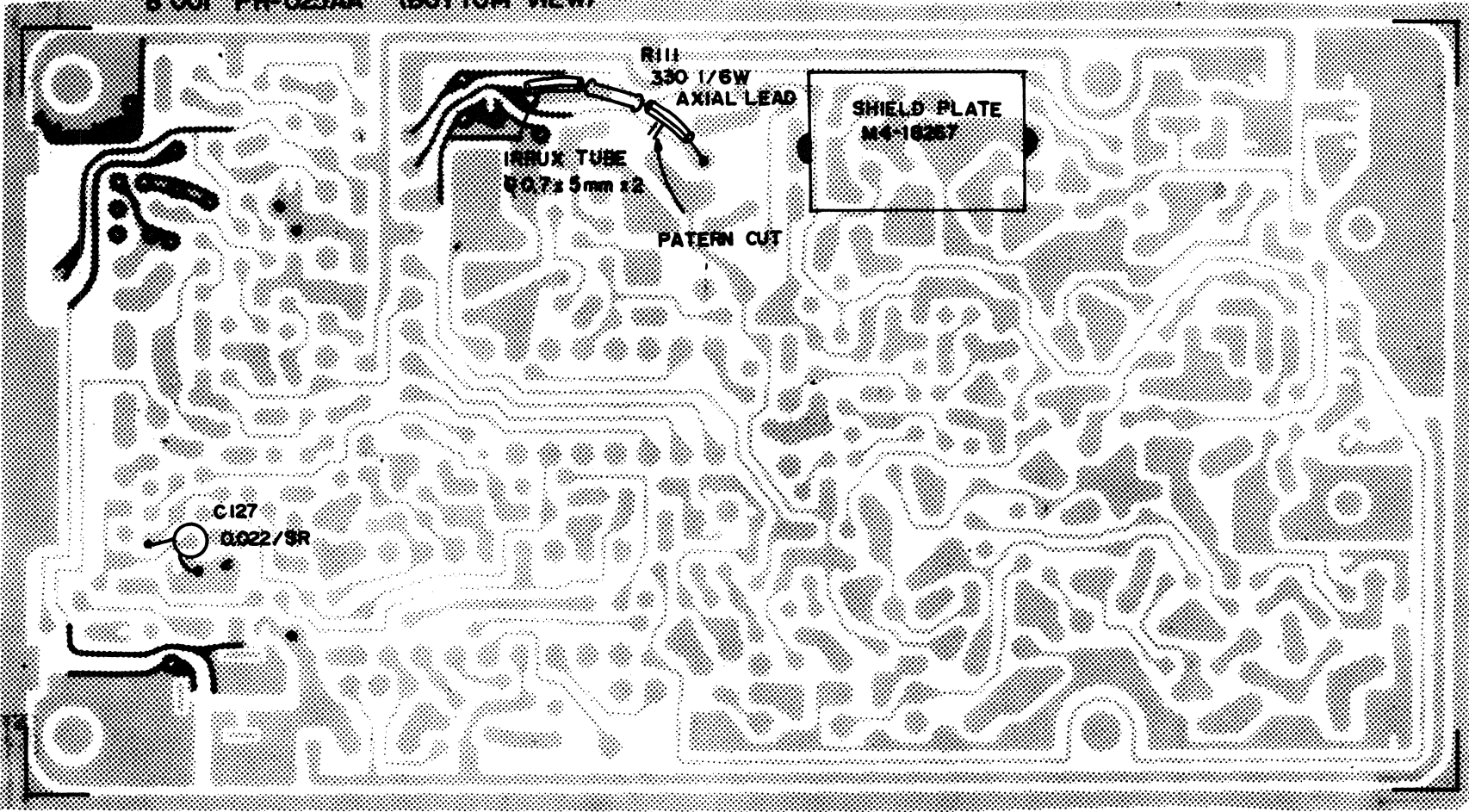
1P~150P	CG
0.001~0.0047	C
0.01~0.047	F

1E-106E-G

DESIGN BY	DRAWN BY	UNIDEN NO.	MODEL NO.
25.7.3	61.7.22	UB-106A	BC50XL
SAKI	TANAKA	TITLE KEY BOARD PARTS ASSEMBLY TOP VIEW	
CHECK BY	APPRO BY	E23-6458	REV. MARK

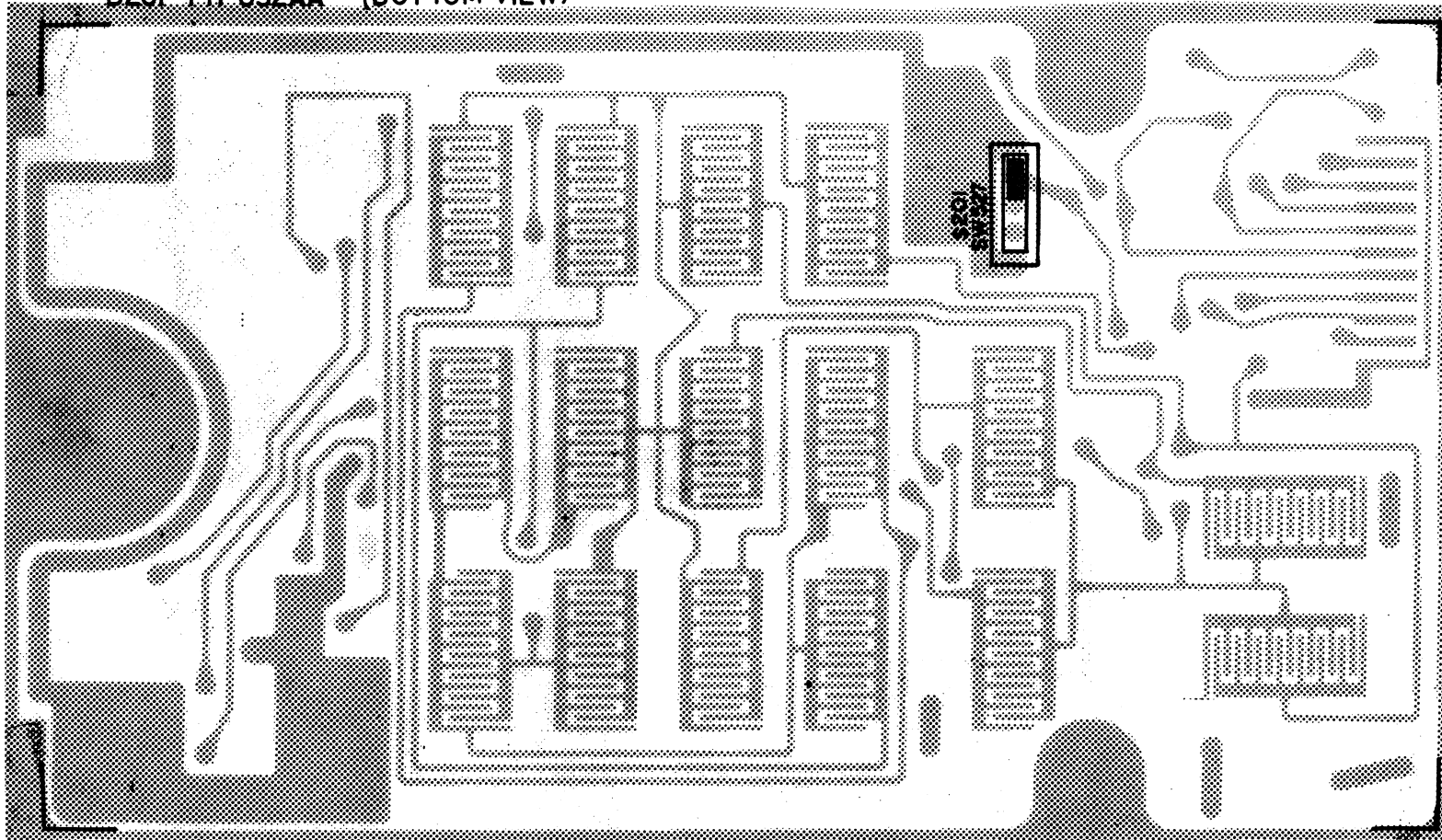
UNIDEN CORP.

B 001 PH-025AA (BOTTOM VIEW)



DESIGN BY	DRAWN BY	UNIDEN NO.	MODEL NO.
86.7.30	86.7.28	UB-106A	BC50XL
SAKO	C. YAMADA	TITLE MAIN PCB	
CHECK BY	APPRO. BY	PART'S ASSY BOTTOM VIEW	
		DRAWING NO.	REV. MARK
		E 24-6459	

B201 PH-032AA (BOTTOM VIEW)



DESIGN BY	DRAWN BY	UNIDEN NO.	MODEL NO.
H. 7.31	GI. 7. 24	UB-106A	BC50XL
SAKO	C.YAMADA	TITLE KEY BOARD PCB	
CHECK BY	APPRO. BY	PARTS ASSY BOTTOM VIEW	
		DRAWING NO.	REV. MARK
		E24-6460	

UNIDEN CORP.

