

HALLICRAFTERS
MODEL S-38

TUNING CONTROL

C.W. PITCH CONTROL

BAND SWITCH

VOLUME CONTROL ON-OFF SWITCH

BAND SPREAD

HALLICRAFTERS MODEL S-38

HALLICRAFTERS
MODEL S-38

TRADE NAME Hallcrafters Model S-38
 MANUFACTURER Hallcrafters Co., 2611 S. Indiana Ave., Chicago, Illinois
 TYPE SET AC - DC Superheterodyne - 4 Band Communications Receiver
 TUBES (SIX) Types 12SA7GT Converter, 12SK7GT 1F Amp., 12SQ7GT Det.-AVC-AF, 12SQ7GT BFO-ANL, 35L6GT Power Output, 35Z5GT Rectifier.

POWER SUPPLY 105-125 Volts AC-DC Rating .245 Amps. @ 117 Volts AC

TUNING RANGE-band #1- 540-1650KC Band #2- 1650KC-5.0MC Band #3 5.0MC-14.5MC Band #4- 13.5MC-32.0MC

ALIGNMENT INSTRUCTIONS

| DUMMY ANTENNA | SIGNAL GENERATOR COUPLING | SIGNAL GENERATOR FREQUENCY | BAND SWITCH POS. | RADIO DIAL SETTING | OUTPUT METER | ADJUST | REMARKS |
|--|--|----------------------------|------------------|--------------------|-------------------|---------------|---|
| NONE | High side to stator plates of rear section of tuning gang. Low side to "G" on antenna strip. | 455KC | "1" | 1000KC | Across voice coil | A1,A2, A3,A4. | Adjust for maximum output Repeat adjustment. |
| " | " | " | " | " | " | BFO Slug | Turn off 400Ω modulation on signal generator. Set CW/AM switch at Cw. Remove pitch control knob and adjust slotted screw shaft for zero beat. |
| 390Ω carbon res. | High side to "A1" on antenna strip. Low side to "G" on antenna strip. | 30MC | "4" | 30MC | " | A5,A6 | Adjust for maximum output. Rock gang slightly when adjusting A6. |
| " | " | 14MC | "3" | 14MC | " | A7,A8 | Adjust for maximum output. Rock gang slightly when adjusting A8. |
| " | " | 5MC | "2" | 5MC | " | A9 | Adjust for maximum output. |
| " | " | 1.8MC | " | 1.8MC | " | A10 | Adjust for maximum output and repeat A9 at 5MC. |
| " | " | 5MC | " | 5MC | " | A11 | Adjust for maximum output. Rock gang slightly. |
| " | " | 1500KC | "1" | 1500KC | " | A12 | adjust for maximum output. |
| " | " | 600KC | " | 600KC | " | A13 | Adjust for maximum output and repeat A12 at 1500KC. |
| " | " | 1500KC | " | 1500KC | " | A14 | Adjust for maximum output. Rock Gang Slightly. |
| Set receiver controls as follows: "Speaker-Phones" switch at speaker; Volume control at full clockwise (maximum); CW/AM switch at "AM" (except for BFO adjustment); noise limiter switch at "off"; bandspread tuning at "0" (min. cap.); "standby-receive" switch at receive. Adjust output of signal generator no higher than is necessary to obtain output reading. Use insulated alignment screwdriver for adjusting. | | | | | | | |

HOWARD W. SAMS & CO., INC. • 2924 East Washington Street • Indianapolis 6, Indiana

"The listing of any available replacement part herein does not constitute in any case a recommendation, warranty or guaranty by Howard W. Sams & Co., Inc., as to the quality and suitability of such replacement part. The numbers of these parts have been compiled from information furnished to Howard W. Sams & Co., Inc., by the manufacturers of the particular type of replacement part listed."
 "Reproduction or use, without express permission, of editorial or pictorial con-

tent, in any manner, is prohibited. No patent liability is assumed with respect to the use of the information contained herein. Copyright 1946 by Howard W. Sams & Co., Inc., Indianapolis, Indiana, U. S. A. Copyright under International Copyright Union. All rights reserved under Inter-American Copyright Union 11910) by Howard W. Sams & Co., Inc."

PARTS LIST AND DESCRIPTIONS

CHASSIS—TOP VIEW

TUBES

| ITEM No. | USE | REPLACEMENT DATA | | RMA BASE TYPE | INSTALLATION NOTES |
|----------|--------------|------------------------|----------------------|---------------|--------------------|
| | | HALLICRAFTERS PART No. | STANDARD REPLACEMENT | | |
| 1 | Converter | 128A70T | 128A70T | 8AD | |
| 2 | IF Amp. | 128K70T | 128K70T | 8N | |
| 3 | Det.-AVC-AF | 128S70T | 128S70T | 8C | |
| 4 | BFO-ANL | 128T70T | 128T70T | 8D | |
| 5 | Power Output | 35L6GT | 35L6GT | 7AC | |
| 6 | Rectifier | 35Z5GT | 35Z5GT | 6/D | |

CAPACITORS

Capacity values given in the rating column are in mfd. for Electrolytic and Paper Capacitors, and in mmfd. for Mica and Ceramic Capacitors.

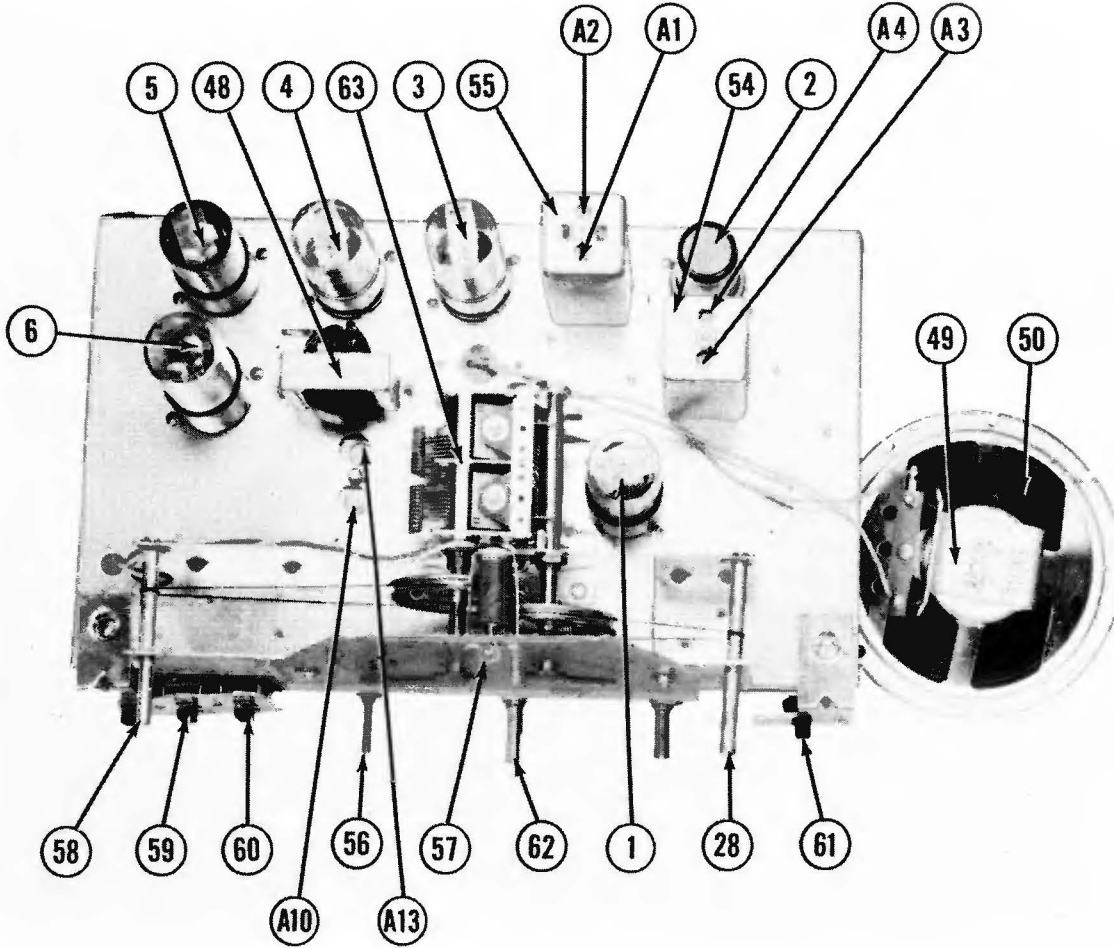
| ITEM No. | RATING CAP. | REPLACEMENT DATA | | | | AEROVOX PART No. | CORNEILL-DUBILIER PART No. | IDENTIFICATION CODES AND INSTALLATION NOTES |
|----------|-------------|------------------------|-----------------|----------------|------------------|------------------|----------------------------|---|
| | | HALLICRAFTERS PART No. | MALLOY PART No. | SOLAR PART No. | SPRAGUE PART No. | | | |
| 7(A) | 150 | 7C148 | 7B5-40K-150 | 7M-430 | | EZ44315C | Filter - Red | |
| (B) | 30 | 3N563 | M-30-150 | UT-301 | | | " - Yellow | |
| (C) | 30 | | | 4A-25 | | | | |
| (D) | 25 | | | TC-8 | 484-.25 | D74P25 | Cath. Bypass - Blue | |
| 8 | .25 | 46A1254J | TP430 | TC-12 | 484-.02 | D74S2 | Line Isolating | |
| 9 | .02 | 46A1203J | TP423 | TC-12 | 484-.02 | D74S2 | Line Isolating | |
| 10 | .02 | 46A1203J | TP412 | TC-12 | 484-.02 | D74S2 | Line Isolating | |
| 11 | .01 | 46A1103J | TP421 | TC-11 | 484-.01 | D74S1 | 35L6 Plate Bypass | |
| 12 | .005 | 46A1503J | TP408 | TC-25 | 484-.005 | D79D5 | Audio Coupling | |
| 13 | .01 | 46A1103J | TP421 | TC-11 | 484-.01 | D74S1 | BFO Plate Bypass | |
| 14 | .05 | 46A1503J | TP426 | TC-15 | 484-.05 | D74S5 | IF Cath. Bypass | |
| 15 | .25 | 46A1254J | TP430 | TC-2 | 484-.25 | D74P25 | Screen Bypass | |
| 16 | .02 | 46A1203J | TP423 | TC-12 | 484-.02 | D74S2 | AVC Filter | |
| 17 | .01 | 46A1103J | TP410 | TC-11 | 484-.01 | D76S1 | Ant. Coupling | |
| 18 | .05 | 46A1503J | TP426 | TC-15 | 484-.05 | D74S5 | RF Bypass Pwr. Supp. | |
| 19 | .20 | CM20A22M | MC240 | M0.5-325 | 1468-.0025 | 5W5T25 | RF Bypass Diode | |
| 20 | .50 | CM20A22M | MC240 | M0.5-325 | 1468-.0025 | 5W5T25 | BFO Grid Cap. | |
| 21 | .470 | CM20A47K | MC245 | M0.5-35 | 1468-.0005 | 5W5T5 | BFO Fixed Trimmer | |
| 22 | .270 | CM20A27J | MC240 | M0.5-225 | 1467-.0025 | 5W5D25 | RF Grid Cap. | |
| 23 | .270 | CM20A27J | MC240 | M0.5-225 | 1467-.0025 | 5W5D25 | RF Grid Cap. | |
| 24 | .270 | CM20A27J | MC240 | M0.5-225 | 1467-.0025 | 5W5D25 | Fixed Padder | |
| 25 | .510 | CM20A51K | MC245 | M0.5-35 | 1468-.0005 | 5W5T5 | RF Bypass Rect. | |
| 26 | .510 | CM20A51K | MC240 | M0.5-325 | 1468-.00025 | 5W5T25 | Audio Plate Bypass | |
| 27 | 1200 | CM20A12K | MC255 | M0.3-21 | 1468-.001 | 1W5D1 | Fixed Trimmer | |

CONTROLS

| ITEM No. | RATING RESISTANCE | WATTS | REPLACEMENT DATA | | | CLAROSTAT PART No. | INSTALLATION NOTES |
|----------|-------------------|-------|------------------------|-----------------|--------------|--------------------|---------------------------------|
| | | | HALLICRAFTERS PART No. | MALLOY PART No. | IRC PART No. | | |
| 28(A) | 500K | 1 | 25W094 | M248 | D13-133 | AV-93-1 | Volume Control |
| (B) | 500K | 1 | Not Req. | Not Req. | A | RS-2 | Attach to 28A per instructions. |
| (C) | Switch | | | M26 | 41 | SM-A | " " " " " " |

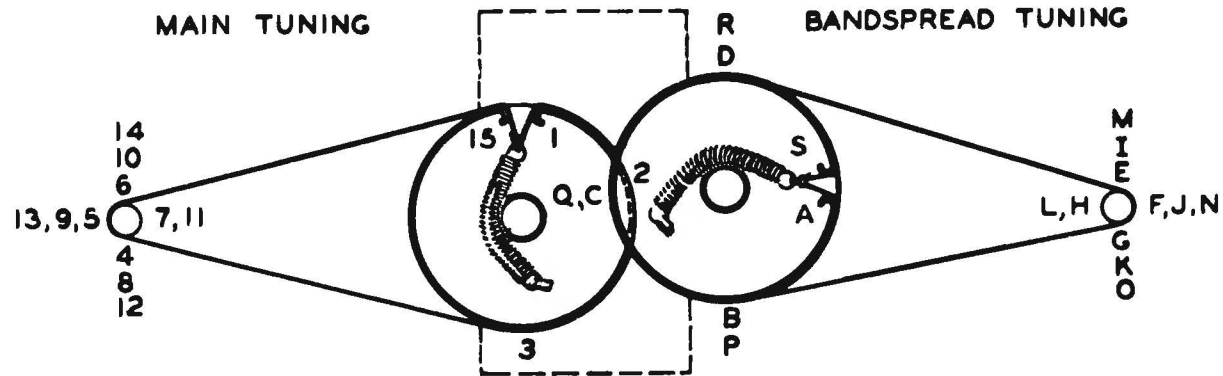
RESISTORS

| ITEM No. | RATING RESISTANCE | WATTS | REPLACEMENT DATA | | | IDENTIFICATION CODES |
|----------|-------------------|-------|------------------------|--------------|----------|-------------------------------|
| | | | HALLICRAFTERS PART No. | IRC PART No. | PART No. | |
| 29 | 10K | | RC20A10M | RTS-10K | | Br.-Blk.-Or. Ant. Shunt |
| 30 | 470K | | RC20A47M | RTS-470K | | Y1.-Vi.-Y1. Converter Grid |
| 31 | 47K | | RC20A47M | 5W-47K | | Y1.-Vi.-Blk. Osc. Series Grid |
| 32 | 22K | | RC20A22M | RTS-22K | | Red-Red-Or. Osc. Grid |
| 33 | 2-2 Meg. | | RC20A22M | RTS-2.2 Meg. | | Red-Red-Or. AVC Network |
| 34 | 47K | | RC20A47M | RTS-47K | | Y1.-Vi.-Or. Diode Load |
| 35 | 470K | | RC20A47K | RTS-470K | | Y1.-Vi.-Or. 5F0 Grid |
| 36 | 470K | | RC20A47K | RTS-470K | | Y1.-Vi.-Or. 5F0 Grid |
| 37 | 10 Meg. | | RC20A10M | RTS-10 Meg. | | Er.-Blk.-Blue 1st AF Grid |
| 38 | 220K | | RC20A22M | RTS-220K | | Red-Red-Y1. 1st AF Plate Load |
| 39 | 470K | | RC20A47M | RTS-470K | | Y1.-Vi.-Y1. Output Grid |
| 40 | 150K | | RC20A151K | 5W-150K | | Br.-Grn.-Br. Output Cathode |
| 41 | 100K | | RC20A100K | RTS-100K | | Er.-Blk.-Red Filter |
| 42 | 630K | | RC30A63M | RTA-360 | | Blue-Gray-Br. " |



To restring the main tuning dial cord, cut a 14" length of 30 lb. test dial cord and tie one end of the tension spring of the main tuning capacitor drive pulley at position "1" on the diagram. Following the numbers 1 through 15, wind the cord on the pulley and knob drive shaft. At position "15," stretch the tension spring and tie the cord securely. Cut off the excess cord. Note that two complete turns are wound on the knob drive shaft.

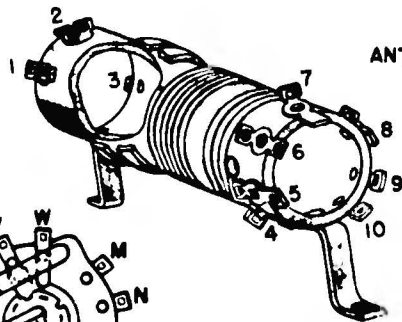
To restring the bandspread tuning dial cord, cut a 16" length of dial cord and follow the procedure as explained above, except start at position "A" on the diagram and proceed through position "S". Note that the knob drive shaft has two complete turns.



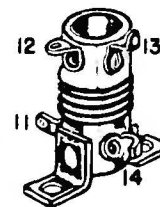
TUNING CAPACITOR FULLY CLOSED (BOTH SECTIONS).

DIAL STRINGING PROCEDURE

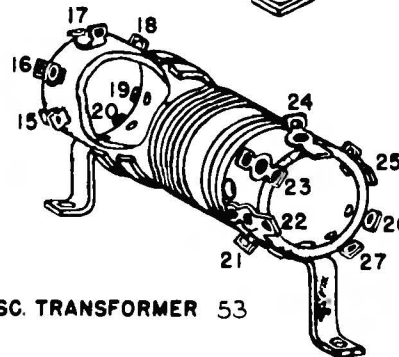
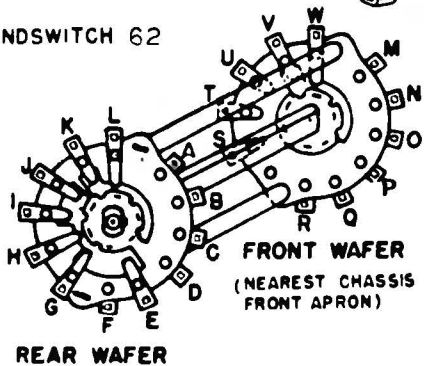
ANT. TRANSFORMER 51



ANT. TRANSFORMER 52



BANDSWITCH 62



OSC. TRANSFORMER 53

COIL CONNECTIONS

