



Stromberg-Carlson



VOLUME	DIAL LIGHT	TONE	METERS	TIME
1-4000 kHz	34-1.6	555-187.5	WINTER . . . EVENINGS	
4-10 MHz	17.32-10.4	17.3-16.3	EVENINGS OR LATE SUMMER AFTERNOONS	
10-20 MHz	14.62-13.7	30.3-19.1	WINTER . . . EVENINGS	
20-30 MHz	11.42-13.4	26.3-24.2	EARLY MORNING AND SUMMER EVENINGS	
30-40 MHz	9.22-10.4	32.6-28.8	WINTER . . . LATE AFTERNOON AND EVENINGS	
40-50 MHz	7.9-8.0	76.9-37.5	EARLY MORNING AND SUMMER EVENINGS	
50-60 MHz	7.8-3.9	104.5-74.9	WINTER . . . EVENINGS	
60-70 MHz	1.50-1.10	193.5-73.5	WINTER . . . EVENINGS	



**PARTS LIST AND DESCRIPTIONS (Continued)**

ITEM No.	RATING CURRENT	REPLACEMENT DATA				NOTES
		Stromberg-Carlson Part No.	FEDERAL PART No.	INTERNATIONAL PART No.	MALLORY PART No.	
M1	.072A	102205	1004A	RSU00	65U00	5M1 100

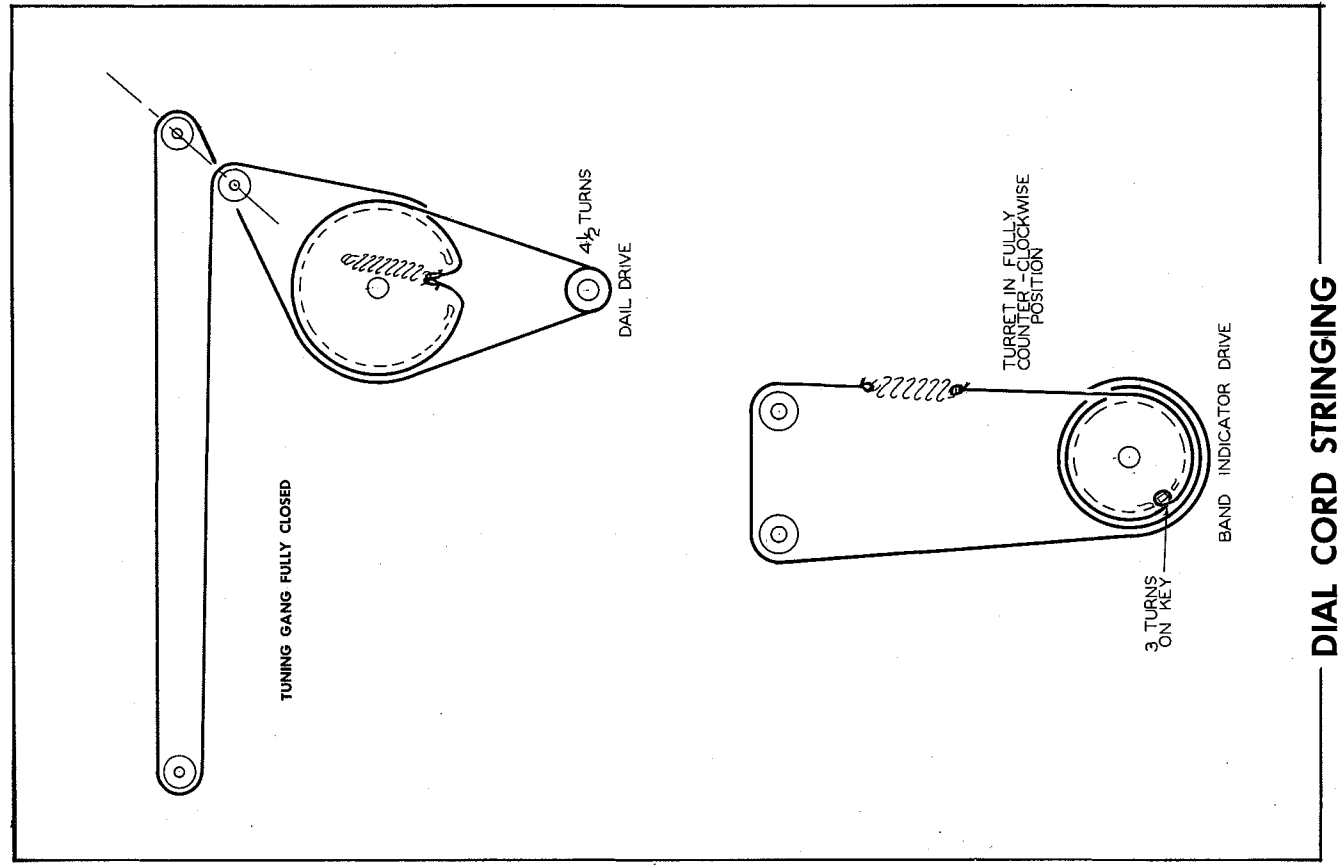
  

ITEM No.	VOLTAGE	REPLACEMENT DATA				INSTALLATION NOTES
		Stromberg-Carlson Part No.	EVEREADY	BURGESS		
M2	9V "A" 90V "B" 1.5V (Dial Light)	141382	"A" 950	"A,B" 752	"A" 2R "A,B" G0B00	

ITEM No.	PART NAME	Stromberg-Carlson Part No.	NOTES
M5	Dial Light	137011	#112
M6	Tuning Cap	136-012	3 Gang (19-537MMF, 19-495MMF, 19-507MMF)
M7	Tuner	184048	8 Band-Complete
M8	Switch	186057	Power-Changeover (SPDT-Rotary-Water Type)
M9	Switch	186056	Dial Light-Push Button type
M10	Whip Ant. Assy.	139068	
A25	Trimmer Cap.		Occ. Trimmer-Band 9 (18-41MC-Long Wave)
A27	Trimmer Cap.		Mixer Trimmer-Band 8 (16-41MC-Long Wave)
A28	Trimmer Cap.		Ant. Trimmer-Band 8 (16-41MC-Long Wave)
A9	Trimmer Cap.		Ant. Trimmer-Band 1 (64-1.8MC-BC)
	Knob	134262	Control (4 Used)
	Dial Strip	122087	Band 1
	Dial Strip	122085	Bands 2 & 3
	Dial Strip	122084	Bands 4 & 5
	Dial Strip	122083	Bands 6 & 7
	Dial Strip	122082	Band 8
	Dial Pointer	144024	
	Pointer	144028	Band Indicator

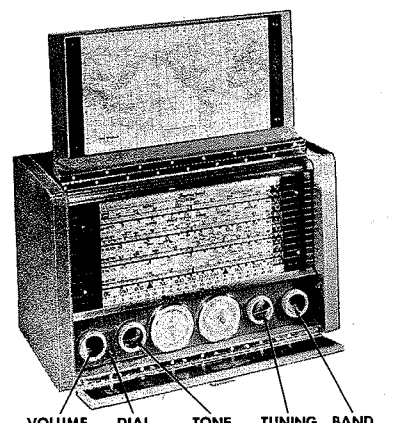
**MISCELLANEOUS**



PHOTOFACT\* Folder



**STROMBERG-CARLSON  
MODEL AWP-8**



**STROMBERG-CARLSON  
MODEL AWP-8**

TRADE NAME	Stromberg-Carlson Model AWP-8		
MANUFACTURER	Stromberg-Carlson Co., Service Dept., 1700 University Ave., Rochester 10, N. Y.		
TYPE SET	Three Power Portable Multi-band AM Superheterodyne Receiver		
TUBES (Six)	Types 1U4 RF Amp., 1L6 Converter, 1U4 IF Amp., 1U5 Det.-AVC-AF Amp., 3V4 Output, 50A1 Ballast		
POWER SUPPLY	105-125 Volts AC-DC (220 Volts AC-DC Using Adapter) (or) 9 Volts "A" Supply and 90 Volts "B" Supply in Pack Form		
RATING	.15 Amp. @ 117 Volts AC (or) 70MA @ 9 Volts DC & 15MA @ 90 Volts DC		
TUNING RANGES			
BAND 1	Broadcast 540-1600KC	BAND 5	31 Meters 9.22-10.4MC
BAND 2	18 Meters 17.32-18.4MC	BAND 6	100 Meters 1.8-3.9MC
BAND 3	19 Meters 14.62-15.8MC	BAND 7	50 Meters 3.9-8.0MC
BAND 4	25 Meters 11.42-12.3MC	BAND 8	LONG WAVE NAVIGATION 155-410KC

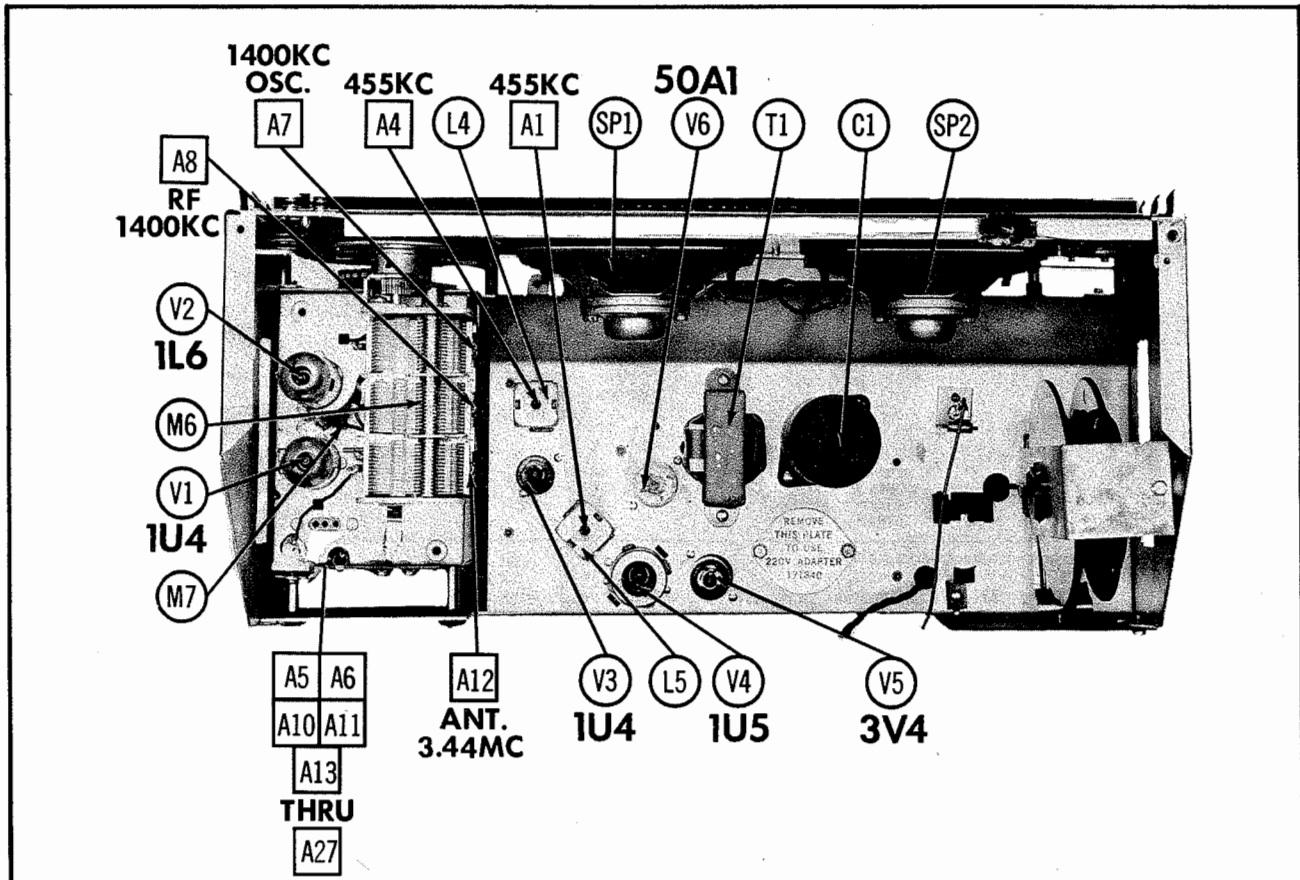
**DISASSEMBLY INSTRUCTIONS**

- CAUTION— ALWAYS REMOVE CHASSIS FROM FRONT OF CABINET.**
- A—REMOVING CHASSIS FROM CABINET**
1. Remove 4 chassis screws at bottom of cabinet.
  2. Remove 2 rubber bumpers inside lower section of front cover.
  3. Remove antenna disconnect plugs (loop and whip).
  4. Reel in AC line cord.
  5. Slide chassis out through front of cabinet.
- B—REPLACING CONTROLS**
1. Remove chassis as in A above.
  2. Remove chassis bottom cover plate (3 snap fasteners at rear of chassis).
  3. Remove all 4 knobs.
  4. Remove barometer and thermometer by pushing out from rear with finger.
  5. Remove two bottom screws and two front snap fasteners holding control panel in place.
  6. Remove dial light switch and lift control panel off.
- C—REPLACING BAND SWITCH INDICATOR DRIVE CORD**
1. Perform A and B above.
  2. Remove dial lamps and sockets. (Do not disconnect leads).
  3. Remove upper dial trim strip using caution to disengage dial pointer. Set pointer at low frequency end of dial and slide trim strip off to the right. To replace, use the same method.
  4. Remove dial end plates (brass) by removing two screws in each plate and sliding plates off towards the outer sides.
  5. Remove 5 dial strips. Use thumb pressure to release spring catches.
  6. Remove lower dial trim strip. Loosen 4 screws and slide strip upward.
  7. Remove bracket and band pointer track and replace drive cord. (See dial stringing diagram).
- D—REPLACING DIAL AND DRIVE CORD**
1. Perform A, B, and C above.
  2. Remove 3 metal screws at each end of speaker baffle plate.
  3. Carefully move speaker baffle and speakers out of way. It is not necessary to disconnect speaker leads.
  4. Re-string dial drive cable. (See dial stringing diagram). Do not re-install dial pointer at this time.
  5. Re-assemble front panel less upper dial trim strip.
  6. Re-install dial pointer and calibrate.
  7. Replace upper dial trim strip as described in item 3 under Replacing Band Switch Indicator Drive Cord.

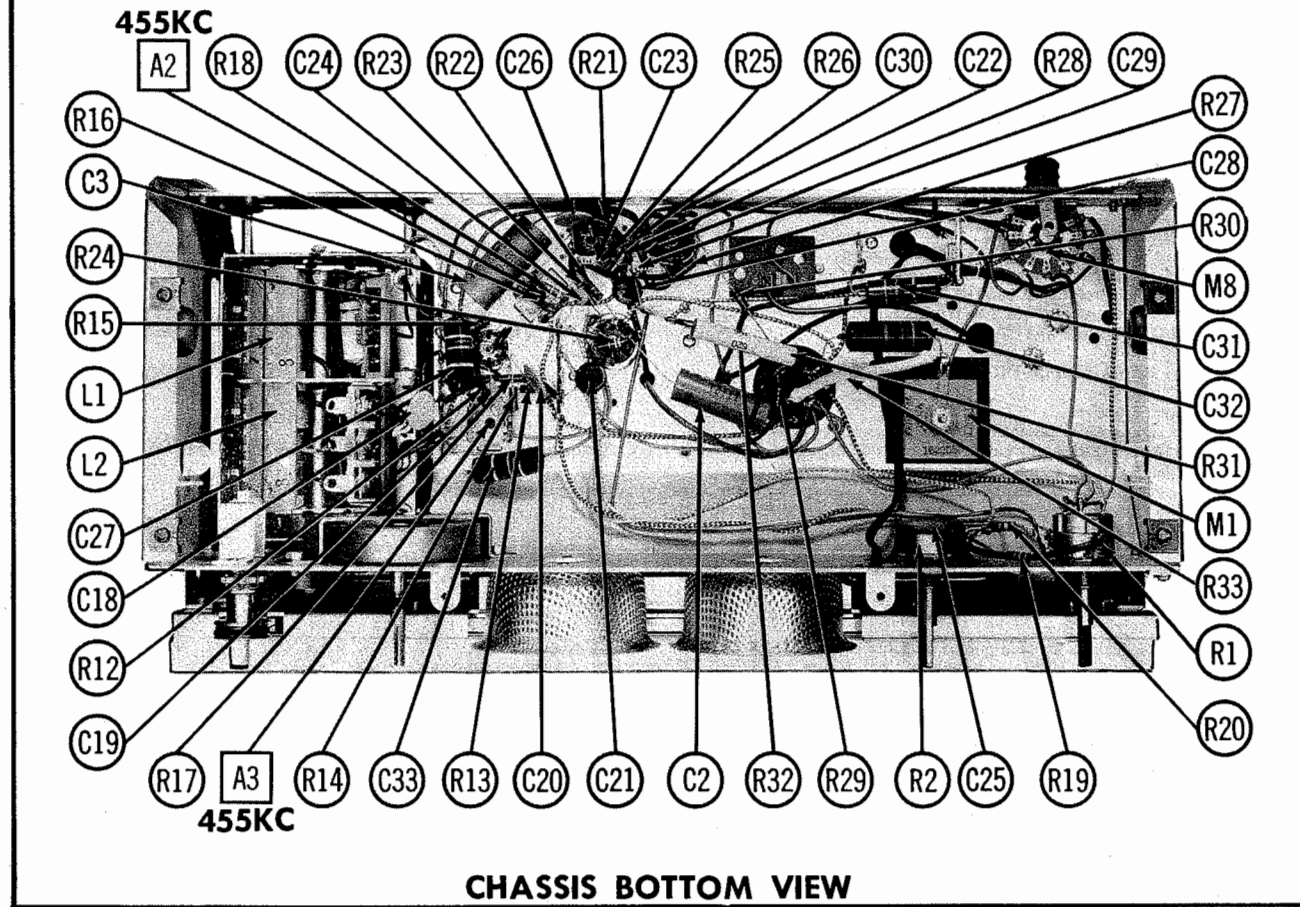
**HOWARD W. SAMS & CO., INC. • Indianapolis 5, Indiana**

"The listing of any available replacement part herein does not constitute in any case a recommendation, warranty or guaranty by Howard W. Sams & Co., Inc., as to the quality and suitability of such replacement part. The numbers of these parts have been compiled from information furnished to Howard W. Sams & Co., Inc., by the manufacturers of the particular type of replacement part listed."  
"Reproduction or use, without express permission, of editorial or pictorial content, in any manner, is prohibited. No potent liability is assumed with respect to the use of the information contained herein. Copyright 1956 by Howard W. Sams & Co., Inc., Indianapolis 5, Indiana, U. S. of America. Copyright under international Copyright Union. All rights reserved under Inter-American Copyright Union (1910) by Howard W. Sams & Co., Inc." Printed in U. S. of America

**STROMBERG-CARLSON  
MODEL AWP-8**



CHASSIS TOP VIEW



CHASSIS BOTTOM VIEW

**PARTS LIST AND DESCRIPTIONS (Continued)**  
RESISTORS

ITEM No.	RATING OHMS WATT	REPLACEMENT DATA		ITEM No.	RATING OHMS WATT	REPLACEMENT DATA		ITEM No.	RATING OHMS WATT	REPLACEMENT DATA	
		Stromberg-Carlson PART No.	IRC PART No.			Stromberg-Carlson PART No.	IRC PART No.			Stromberg-Carlson PART No.	IRC PART No.
R3	1Meg	28101	BTS-1Meg	R19	33K	14810	BTS-33K	R27	220 5%	149484	BTS-220 5%
R4	15K	28172	BTS-15K	R20	3300	149104	BTS-3300	R28	15000 5%	149387	BTS-15K 5%
R5	82K	28145	BTS-82K	R21	10Meg	148125	BTS-10Meg	R29	10000 5%	148101	BTS-1000 5%
R6	33K	28175	BTS-33K	R22	10Meg 5%	148119	BTS-10Meg 5%	R30	10000 5%	148101	BTS-1000 5%
R7	180K	28182	BTS-180K	R23	3.9Meg 5%	28105	BTS-3.9Meg 5%	R31	6200 5%	148108	BTS-6200 5%
R8	180K	28173	BTS-180K	R24	3.9Meg 5%	28105	BTS-3.9Meg 5%	R32	15K 5%	148108	BTS-15K 5%
R9	68K	28179	BTS-68K	R25	680 5%	149486	BTS-680 5%	R33	750	149483	BTS-750
R10	1200	28147	BTS-1200	R26	1Meg 5%	149486	BTS-1Meg 5%				
R11	1000	28158	BTS-1000	R27	220 5%	149484	BTS-220 5%				
R12	2.7Meg 5%	28198	BTS-2.7Meg 5%								
R13	3.9Meg 5%	28198	BTS-3.9Meg 5%								
R14	1000 5%	148101	BTS-1000 5%								
R15	1000 5%	149486	BTS-1000 5%								
R16	1.2Meg 5%	28192	BTS-1.2Meg 5%								
R17	2.2Meg 5%	28195	BTS-2.2Meg 5%								
R18	47K 5%	149111	BTS-47K 5%								

**PARTS LIST AND DESCRIPTIONS**  
TUBES (SYLVANIA, GENERAL ELECTRIC, WESTINGHOUSE)

ITEM No.	USE	REPLACEMENT DATA		RETNM BASE TYPE	NOTES
		Stromberg-Carlson PART No.	STANDARD REPLACEMENT		
V1	RF Amp.	1U4	1U4	6AR	
V2	Converter	1L6	1L6	7DC	
V3	IF Amp.	1U4	1U4	6AR	
V4	Detector-IF Amp	1U5	1U5	6BW	
V5	Audio Output	3V4	3V4	6BX	
V6	Fullwave	50A1	50A1	9CM	

**ELECTROLYTIC CAPACITORS**

ITEM No.	RATING CAP. VOLT.	REPLACEMENT DATA		NOTES
		Stromberg-Carlson PART No.	REPLACEMENT DATA	
CLA	.60 150	III28	PP889.1	
B	.40 150	III21	TC492	
C	.40 150	III21	TC42	
D	.40 150	III27	TC1502	
C2	10 100		TC1502	
C3	200 10		TC1502	

**FIXED CAPACITORS**

Capacity values given in the rating column are in mfd. for Paper Capacitors, and in mmfd. for Mica and Ceramic Capacitors.

ITEM No.	RATING CAP. VOLT.	REPLACEMENT DATA		NOTES
		Stromberg-Carlson PART No.	REPLACEMENT DATA	
C4	5000	10088	811-005	
C5	22	10087	811-005	
C6	6.8	10087	811-005	
C7	270	10088	811-005	
C8	5000	10088	811-005	
C9	5000	10088	811-005	
C10	270	10088	811-005	
C11	270	10088	811-005	
C12	1000	10088	811-005	
C13	1000	10088	811-005	
C14	.1 400	10088	811-005	
C15	10000	10088	811-005	
C16	5000	10088	811-005	
C17	10000	10088	811-005	
C18	10000	10088	811-005	
C19	10000	10088	811-005	
C20	10000	10088	811-005	
C21	2000	10088	811-005	
C22	1000	10088	811-005	
C23	1000	10088	811-005	
C24	1000	10088	811-005	
C25	20000	10088	811-005	
C26	10000	10088	811-005	
C27	.047	10088	811-005	
C28	2000	10088	811-005	
C29	2000	10088	811-005	
C30	2000	10088	811-005	
C31	.047	10088	811-005	
C32	.047	10088	811-005	
C33	.047	10088	811-005	

Note 1. Some versions may use a 1000MMF unit (Part No. 171227) in this application.  
Note 2. Not used in some versions.

**TRANSFORMER (AUDIO OUTPUT)**

ITEM No.	IMPEDANCE	REPLACEMENT DATA		ITEM No.	RATING OHMS WATT	REPLACEMENT DATA		ITEM No.	RATING OHMS WATT	REPLACEMENT DATA	
		Stromberg-Carlson PART No.	Merit PART No.			Stromberg-Carlson PART No.	Merit PART No.			Stromberg-Carlson PART No.	Merit PART No.
T1	7K	161287	A-2901	A-3823	22S48	22S48	S-53X				

**SPEAKER**

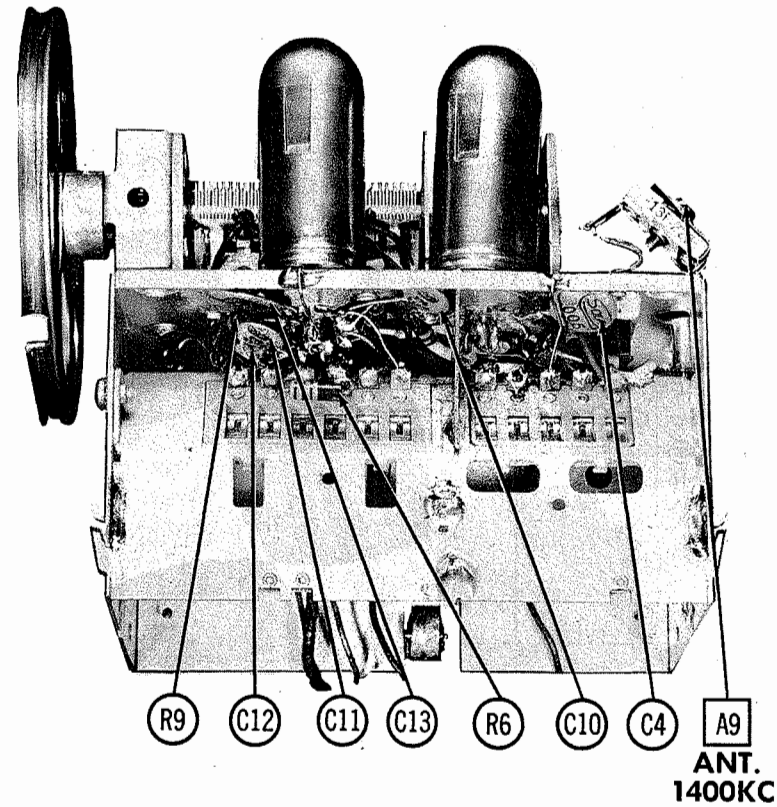
ITEM No.	RATINGS	REPLACEMENT DATA		NOTES
		Stromberg-Carlson PART No.	QUAM PART No.	
SP1	4" PM 3.4D	155844	4407	
SP2	4" PM 3.4D	155844	4407	

**COILS (RF-IF)**

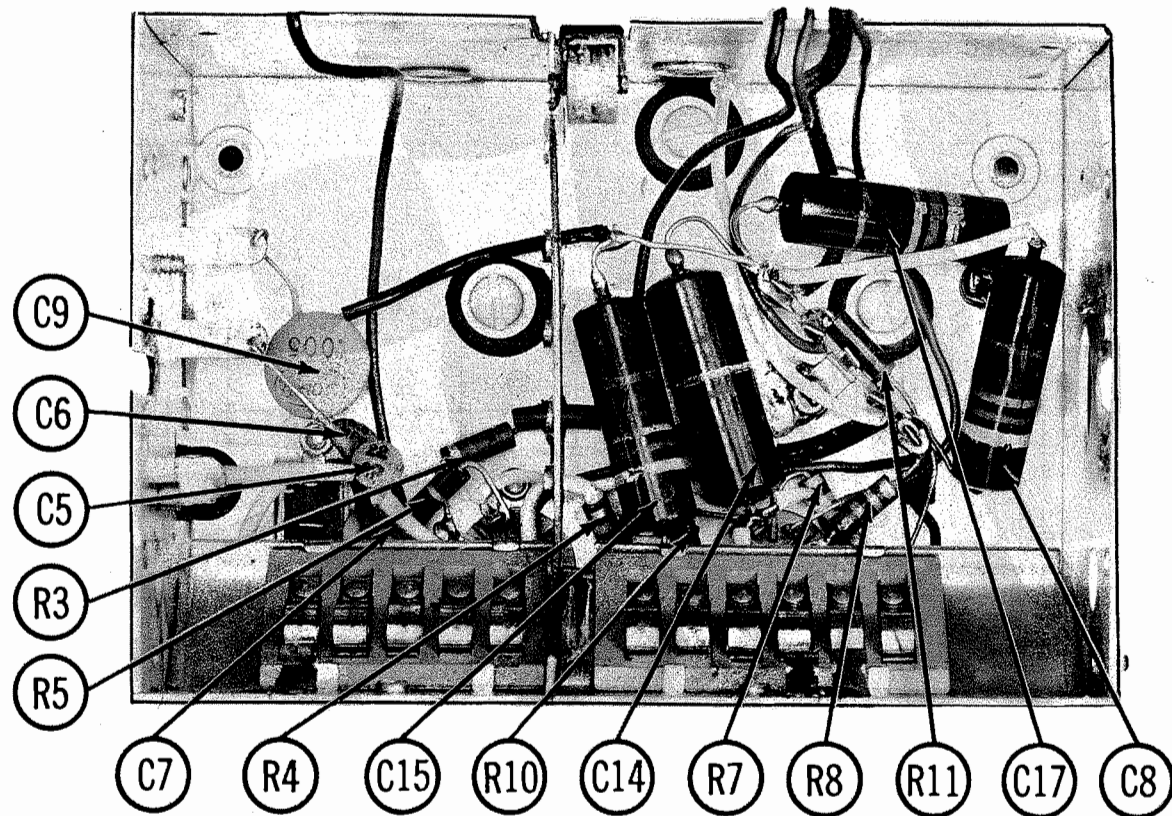
ITEM No.	USE	REPLACEMENT DATA		ITEM No.	RATING OHMS WATT	REPLACEMENT DATA		ITEM No.	RATING OHMS WATT	REPLACEMENT DATA	
		Stromberg-Carlson PART No.	DC RES. PRI. SEC.			Stromberg-Carlson PART No.	Merit PART No.			Stromberg-Carlson PART No.	Merit PART No.
L1A	Ant. Coil	171842	160	16-8768	33K	14810	BTS-33K	R27	220 5%	149484	BTS-220 5%
B	Art. Coil	171843	160	16-8768	3300	149104	BTS-3300	R20	3300	149104	BTS-3300
C	Art. Coil	171844	160	16-8768	10Meg	148125	BTS-10Meg	R21	10Meg	148125	BTS-10Meg
D	Art. Coil	171845	160	16-8768	10Meg 5%	148119	BTS-10Meg 5%	R22	10Meg 5%	148119	BTS-10Meg 5%
E	Art. Coil	171846	160	16-8768	3.9Meg 5%	28105	BTS-3.9Meg 5%	R23	3.9Meg 5%	28105	BTS-3.9Meg 5%
F	Art. Coil	171847	160	16-8768	3.9Meg 5%	28105	BTS-3.9Meg 5%	R24	3.9Meg 5%	28105	BTS-3.9Meg 5%
G	Art. Coil	171848	160	16-8768	680 5%	149486	BTS-680 5%	R25	680 5%	149486	BTS-680 5%
H	Art. Coil	171849	160	16-8768	1Meg 5%	149486	BTS-1Meg 5%	R26	1Meg 5%	149486	BTS-1Meg 5%
L2A	Osc. Coil	171850	160	16-8768	220 5%	149484	BTS-220 5%	R27	220 5%	149484	BTS-220 5%
B	Osc. Coil	171851	160	16-8768	15000 5%	149387	BTS-15K 5%	R28	15000 5%	149387	BTS-15K 5%
C	Osc. Coil	171852	160	16-8768	10000 5%	148101	BTS-1000 5%	R29	10000 5%	148101	BTS-1000 5%
D	Osc. Coil	171853	160	16-8768	10000 5%	148101	BTS-1000 5%	R30	10000 5%	148101	BTS-1000 5%
E	Osc. Coil	171854	160	16-8768	10000 5%	148101	BTS-1000 5%	R31	6200 5%	148108	BTS-6200 5%
F	Osc. Coil	171855	160	16-8768	10000 5%	148101	BTS-1000 5%	R32	15K 5%	148108	BTS-15K 5%
G	Osc. Coil	171856	160	16-8768	10000 5%	148101	BTS-1000 5%	R33	750	149483	BTS-750
H	Osc. Coil	171857	160	16-8768	10000 5%	148101	BTS-1000 5%				
L3	Ant. Coil	139054	160	16-8768							
L4	Input IF	114364	160	16-8768							
L5	Output IF	114453	160	16-8768							

**CONTROLS**

ITEM No.	RATING RESIST. ANCE	REPLACEMENT DATA		INSTALLATION NOTES
		Stromberg-Carlson PART No.	REPLACEMENT DATA	
R1A	1Meg	145188	Q13-137X	Volume tap at 350K
B	Switch	Not Req.	U7438	Attach to R1A.
C	Switch	Not Req.	US-27	Attach to R1A.
R2A	3Meg	145189	76-3	Tone
B	Switch	Not Req.	Q11-140	Attach to R2A.



RF TUNER-LEFT SIDE



RF TUNER-BOTTOM VIEW

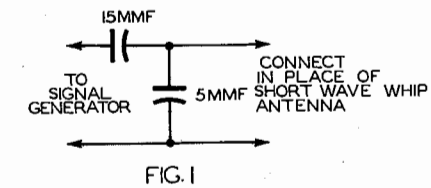
STROMBERG-CARLSON  
Model AWP-8

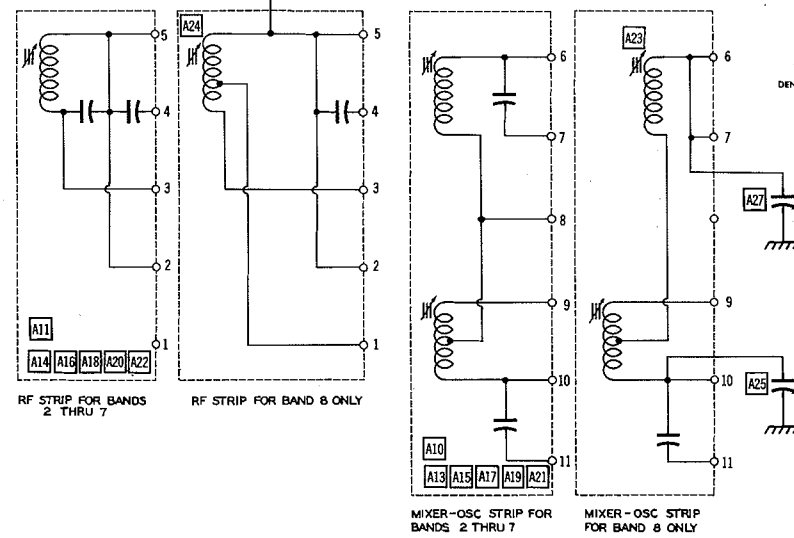
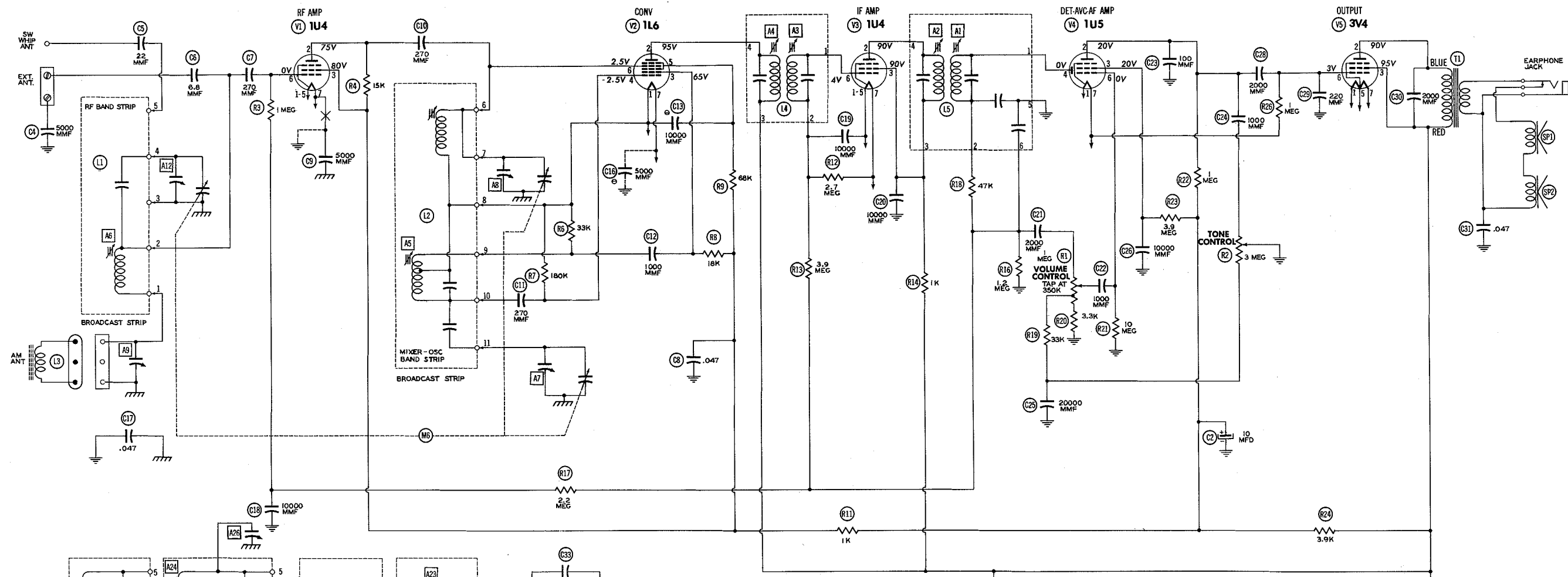
ALIGNMENT INSTRUCTIONS

**ALIGNMENT INSTRUCTIONS—READ CAREFULLY BEFORE ATTEMPTING ALIGNMENT**

Volume control should be at maximum position. Output of signal generator should be no higher than necessary to obtain an output reading. Use an insulated alignment screwdriver for adjusting. Use isolation transformer, if available. If not, connect a .1MF capacitor in series with low side of signal generator and B-. For Front Tuner Core Adjustments, remove 2 screws in right dial strip end plate. Slide plate to right to expose adjustment hole. Antenna Core Adjustments are made thru opening at front of tuner. Osc. Core Adjustments are made thru opening at rear of tuner.

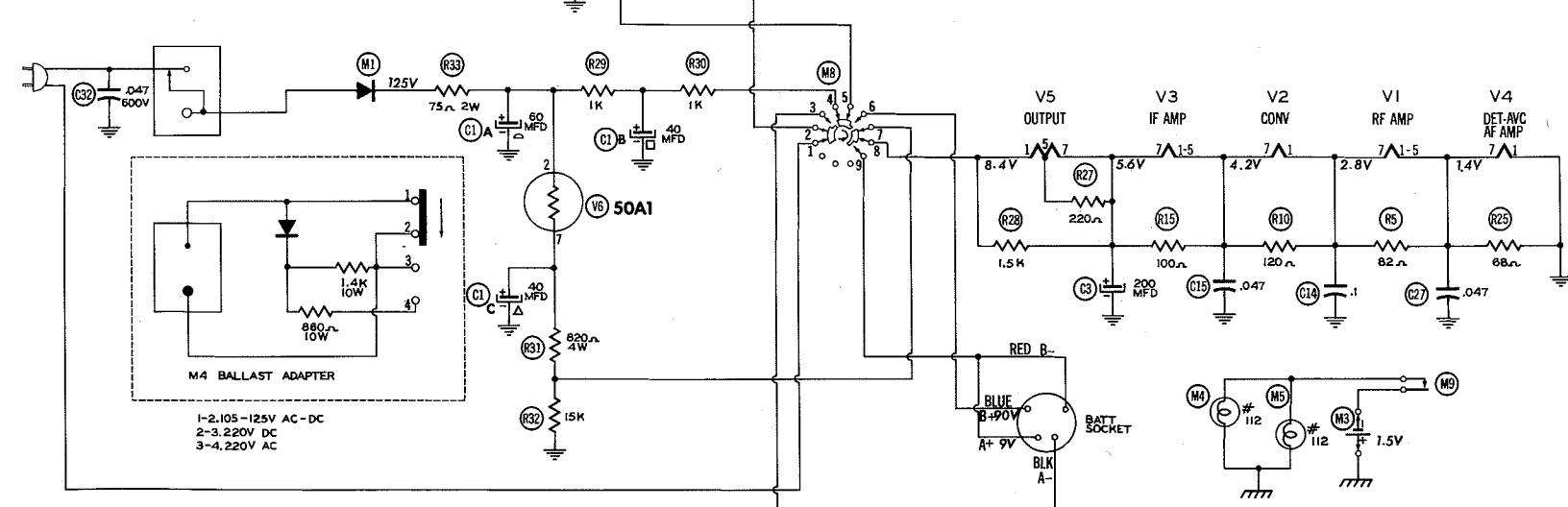
DUMMY ANTENNA	SIGNAL GENERATOR COUPLING	SIGNAL GENERATOR FREQUENCY	BAND SWITCH POS.	RADIO DIAL SETTING	CONNECT VTVM	ADJUST	REMARKS
1. .01MF	High side to mixer section of tuning gang. Low side to B-.	455KC (400% Mod.)	BC Band 1	Tuning gang fully open	Across voice coll	A1, A2, A3, A4	Adjust for maximum deflection.
2.	Loop (Direct)	600KC	"	600KC	"	A5, A6,	Fashion loop of several turns of wire and radiate signal into loop of receiver. Adjust for maximum output.
3.	"	1400KC	"	1400KC	"	A7, A8, A9	"
4. Fig. 1	Antenna terminal thru dummy	1.87MC	SW Band 7	1.87MC	"	A10, A11	Adjust for maximum deflection.
5.	"	3.44MC	"	3.44MC	"	A12	Adjust for maximum deflection. Do not readjust A12 thru completion of alignment.
6.	"	4.0MC	SW Band 6	4.0MC	"	A13, A14	Adjust for maximum deflection
7.	"	7.0MC	"	7.0MC	"		Check for calibration. If necessary, slightly readjust A13, A14.
8.	"	9.23MC	SW Band 5	9.23MC	"	A15, A16	Adjust for maximum deflection.
9.	"	9.97MC	"	9.97MC	"		Check for calibration. If necessary, slightly readjust A15, A16.
10. Fig. 1	"	11.42MC	SW Band 4	11.42MC	Across Voice Coll	A17, A18	Adjust for maximum deflection.
11.	"	11.99MC	"	11.99MC	"		Check for calibration. If necessary, slightly readjust A17, A18.
12.	"	14.63MC	SW Band 3	14.63MC	"	A19, A20	Adjust for maximum deflection.
13.	"	15.33MC	"	15.33MC	"		Check for calibration. If necessary, slightly readjust A19, A20.
14.	"	17.33MC	SW Band 2	17.33MC	"	A21, A22	Adjust for maximum deflection.
15.	"	17.96MC	"	17.96MC	"		Check for calibration. If necessary, slightly readjust A21, A22.
16.	Loop	169KC	LW Band 8	169KC	"	A23	Adjust for maximum deflection.
17.	"	370KC	"	370KC	"	A24	Adjust for maximum deflection. Repeat until no further improvement can be obtained.
18.	"	300KC	"	300KC	"	A25, A26, A27	Adjust for maximum deflection.





● SEE PARTS LIST FOR ALTERNATE VALUE OR APPLICATION

IF = 455 KC



RESISTANCE READINGS

Item	Tube	Pin 1	Pin 2	Pin 3	Pin 4	Pin 5	Pin 6	Pin 7	Pin 8	Pin 9
V 1	1U4	*	†2L 9KΩ	†6.9KΩ	NC	*	4.3MΩ	*		
V 2	1L6	*	†2KΩ	†24.9KΩ	180KΩ	*	35Ω	*		
V 3	1U4	*	†3KΩ	†3KΩ	NC	*	1.8MΩ	*		
V 4	1U5	6A	†1MΩ	†3.9MΩ	1.2MΩ	TP	10MΩ	*		
V 5	3V4	*	†2.3KΩ	†2KΩ	TP	*	1MΩ	*		
V 6	50A1	NC	†15Ω	TP	NC	TP	†250Ω	TP	NC	NC

† MEASURED FROM OUTPUT OF M1.  
 TP - TIE POINT.  
 NC - NO CONNECTION.  
 ALL MEASUREMENTS TAKEN IN BROADCAST POSITION.  
 \* DO NOT USE OHMMETER TO MEASURE FILAMENT RESISTANCE.

- DC voltage measurements taken with vacuum tube voltmeter; AC voltages measured at 1000 ohm per volt.
- Socket connections are shown as bottom views.
- Measured values are from socket pin to common negative.
- Line voltage maintained at 117 volts for voltage readings.
- Nominal tolerance on component values makes possible a variation of ± 1% in voltage and resistance readings.
- Volume control at maximum, no signal applied for voltage measurements.