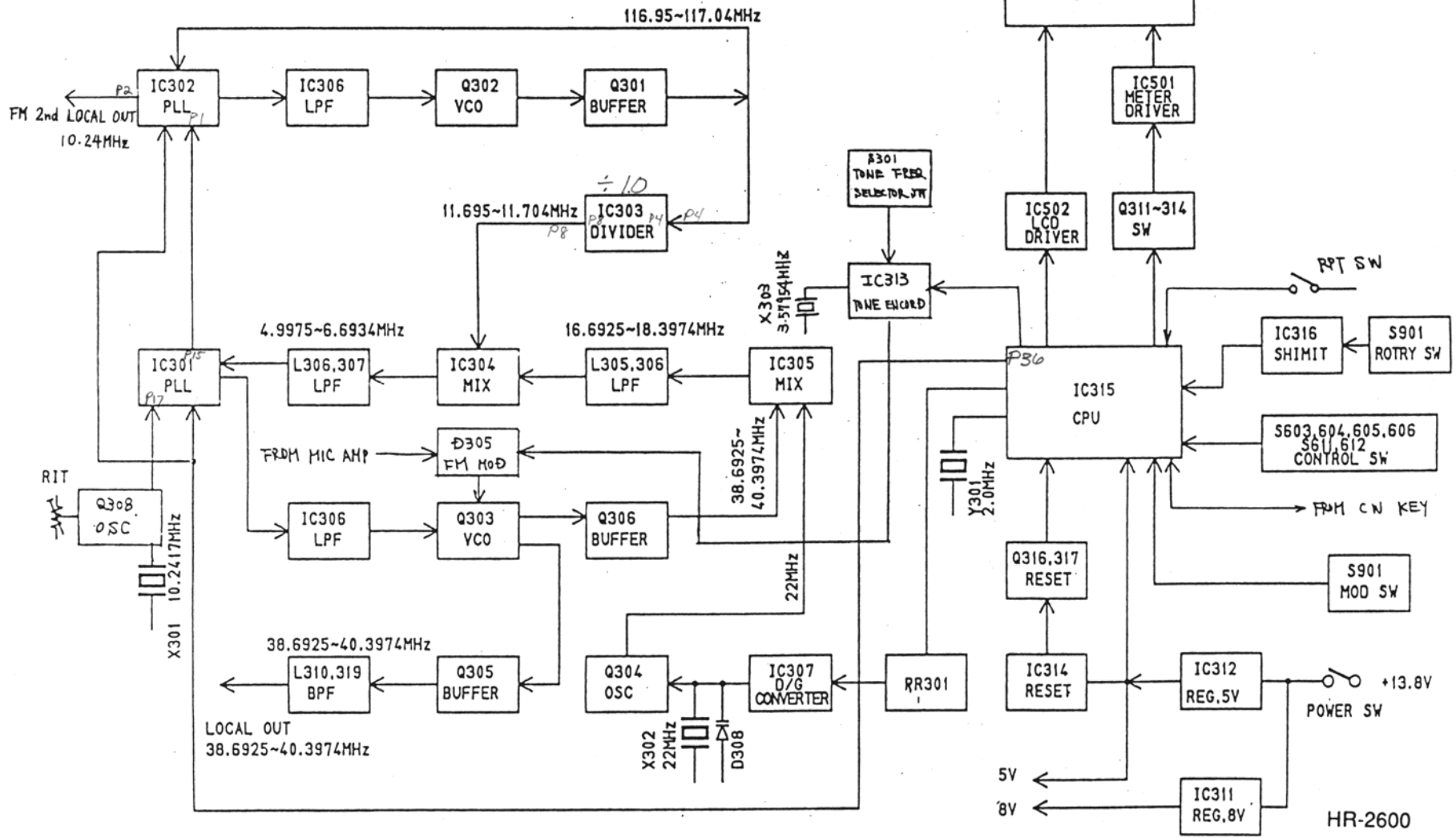
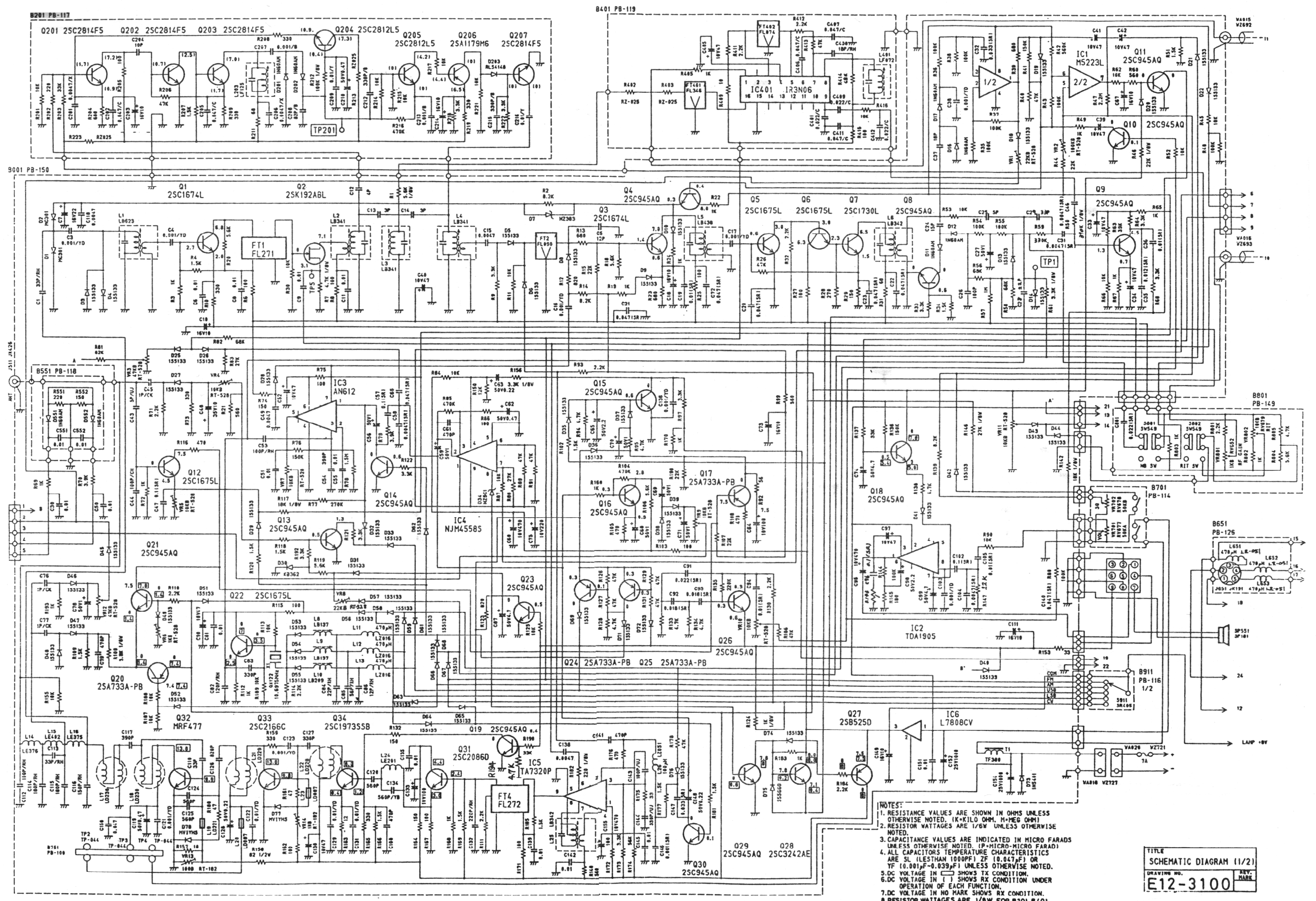


MICOM SECTION

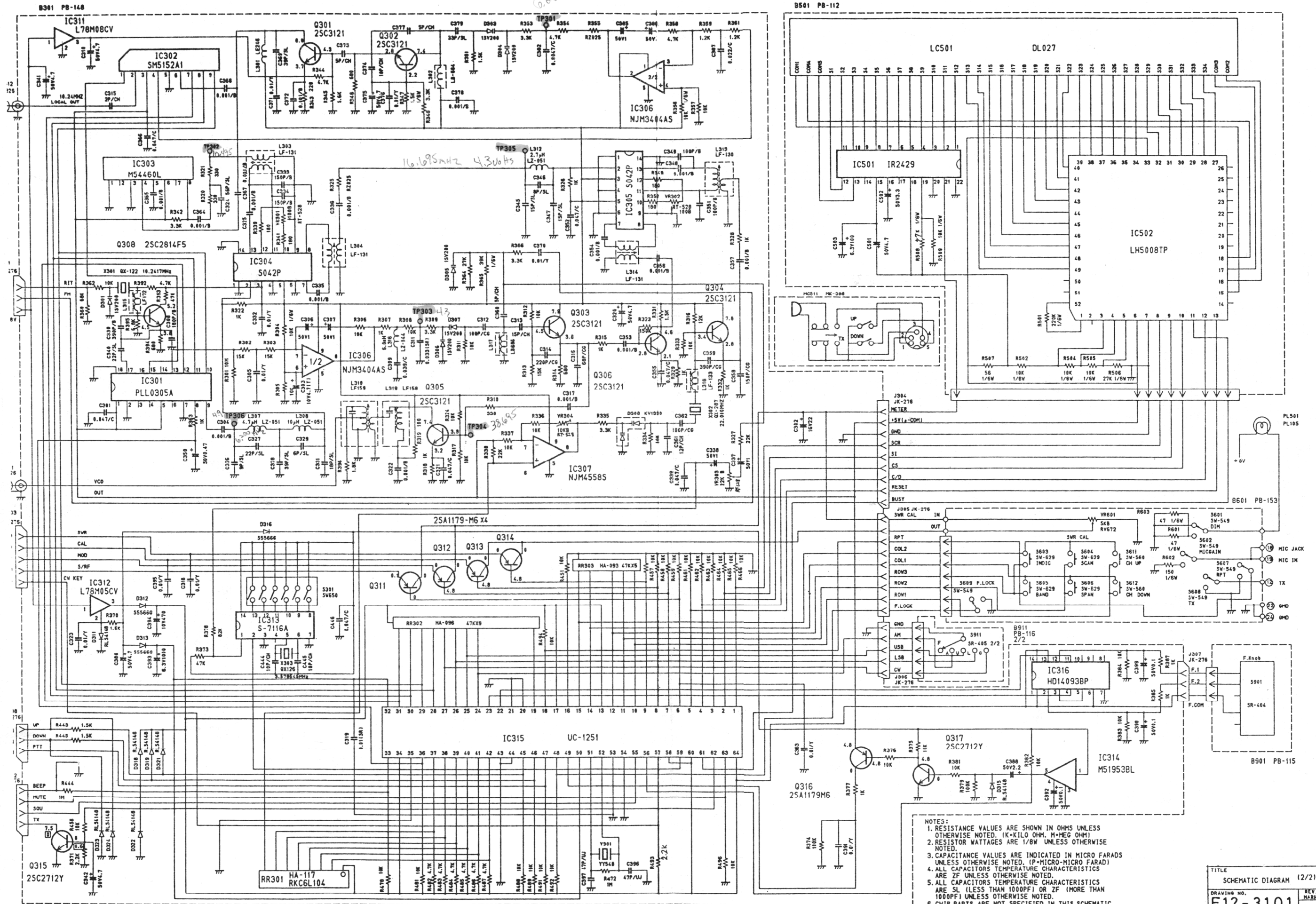
54





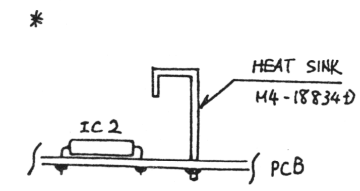
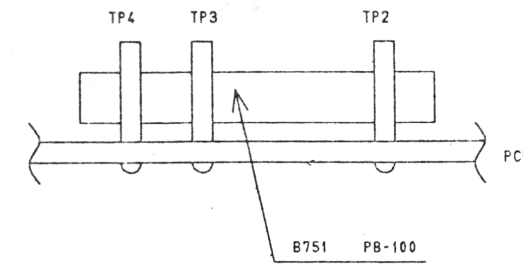
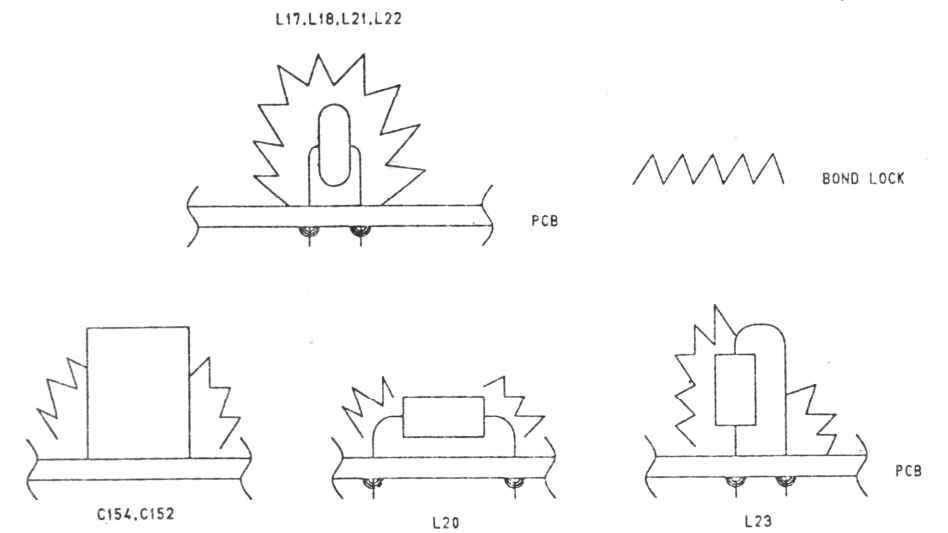
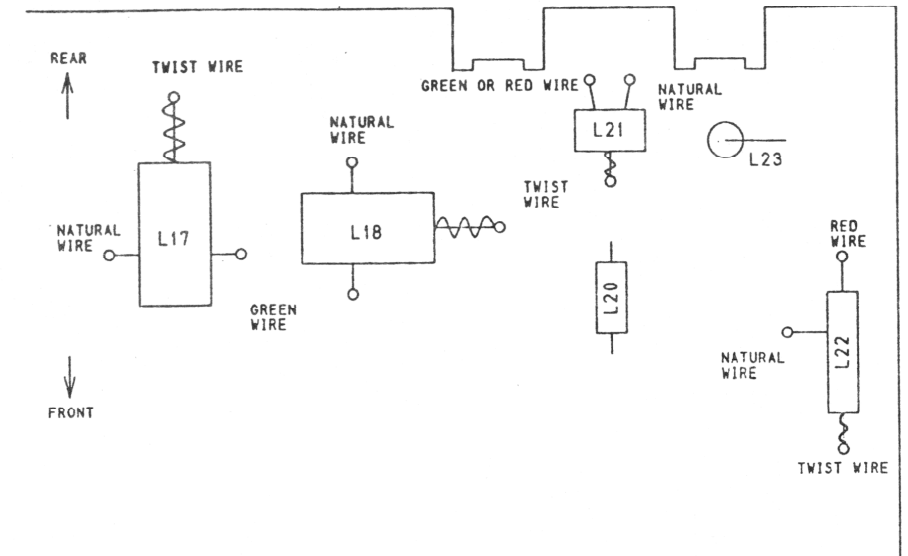
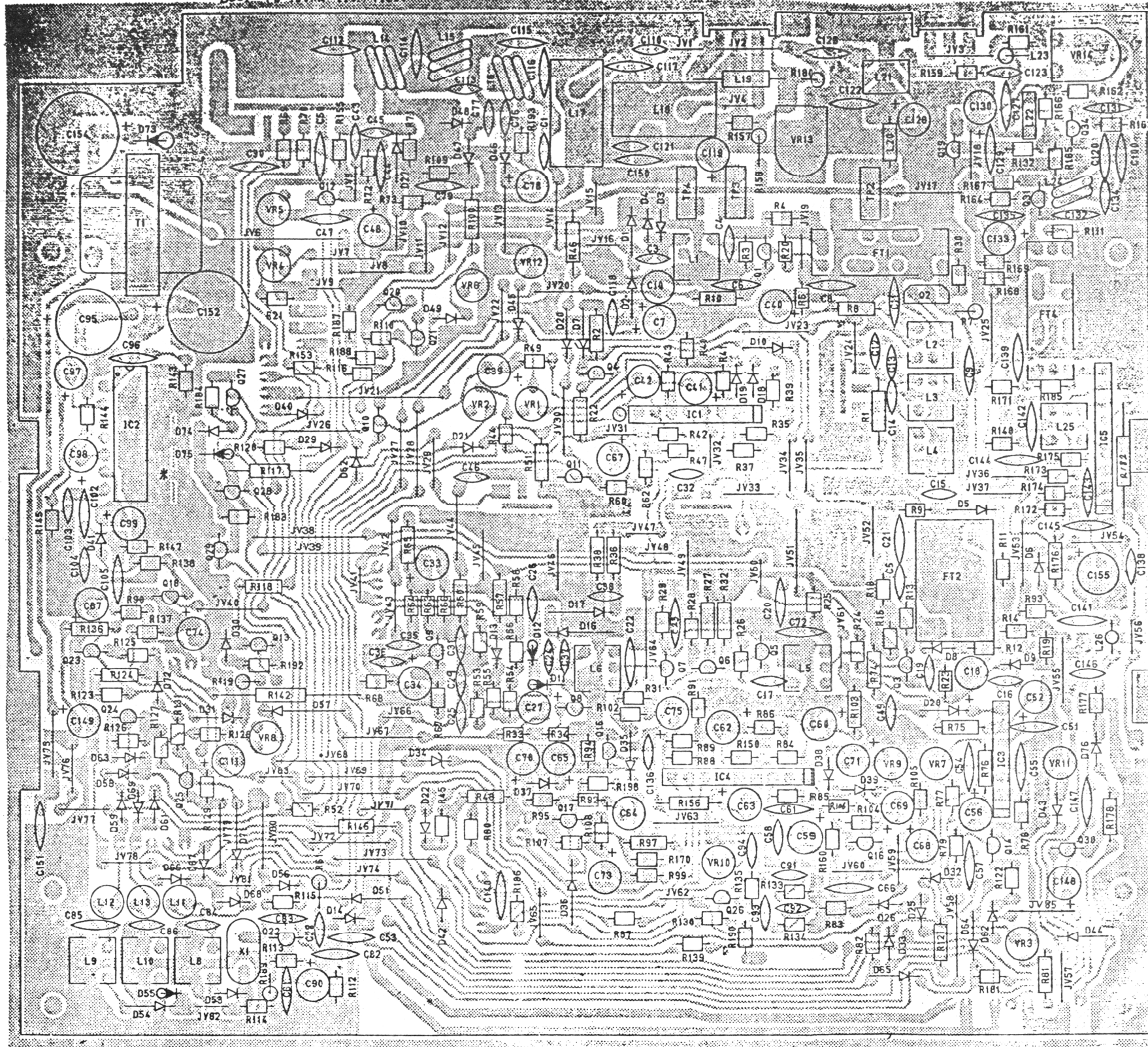
- NOTES:
1. RESISTANCE VALUES ARE SHOWN IN OHMS UNLESS OTHERWISE NOTED. 1K=KILO OHM, M=MEG OHM
 2. RESISTOR WATTAGES ARE 1/8W UNLESS OTHERWISE NOTED.
 3. CAPACITANCE VALUES ARE INDICATED IN MICRO FARADS UNLESS OTHERWISE NOTED. (P=PICTO-FARAD)
 4. ALL CAPACITORS TEMPERATURE CHARACTERISTICS ARE SL (LESS THAN 1000PF) ZF (0.047UF) OR YF (0.001UF-0.039UF) UNLESS OTHERWISE NOTED.
 5. DC VOLTAGE IN () SHOWS TX CONDITION.
 6. DC VOLTAGE IN [] SHOWS RX CONDITION UNDER OPERATION OF EACH FUNCTION.
 7. DC VOLTAGE IN NO MARK SHOWS RX CONDITION.
 8. RESISTOR WATTAGES ARE 1/8W FOR B201, B401.

TITLE
SCHEMATIC DIAGRAM (1/2)
DRAWING NO.
E12-3100
REV.
MARK

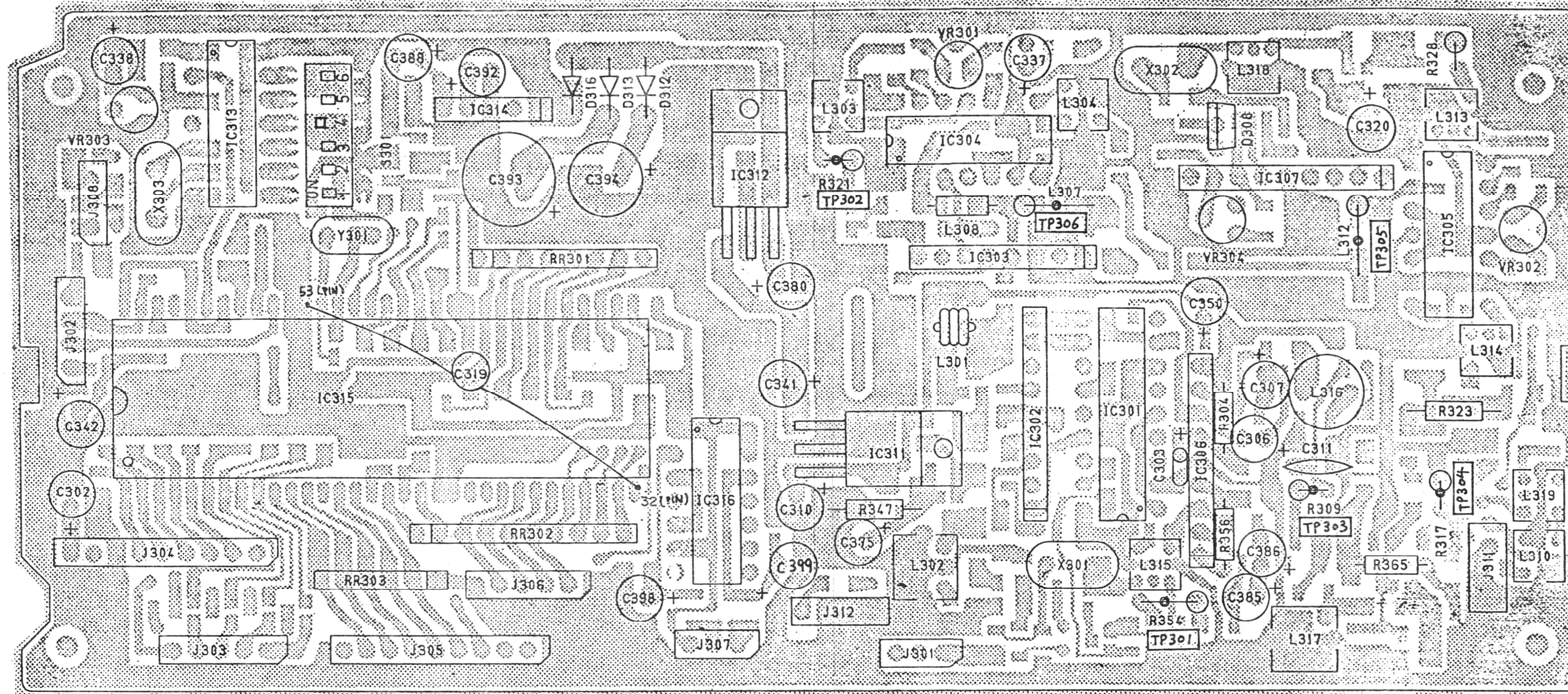


- NOTES:
1. RESISTANCE VALUES ARE SHOWN IN OHMS UNLESS OTHERWISE NOTED. (K=KILO OHM, M=MEG OHM)
 2. RESISTOR WATTAGES ARE 1/8W UNLESS OTHERWISE NOTED.
 3. CAPACITANCE VALUES ARE INDICATED IN MICRO FARADS UNLESS OTHERWISE NOTED. (P=PICO-FARAD)
 4. ALL CAPACITORS TEMPERATURE CHARACTERISTICS ARE ZF UNLESS OTHERWISE NOTED.
 5. ALL CAPACITORS TEMPERATURE CHARACTERISTICS ARE SL (LESS THAN 100PF) OR ZF (MORE THAN 100PF) UNLESS OTHERWISE NOTED.
 6. CHIP PARTS ARE NOT SPECIFIED IN THIS SCHEMATIC DIAGRAM. PLEASE REFER TO THE PARTS LIST FOR THE CHIP PARTS.

TITLE	
SCHEMATIC DIAGRAM (2/2)	
DRAWING NO.	REV.
E12-3101	MARK



TITLE MAIN PCB
PARTS ASSEMBLY
DRAWING NO. E22-8313 1/2



C302	16V22
C303	10V4.7(I)
C306	50V1 (C-105)
C307	50V1 (C-105)
C310	50V4.7
C311	0.033(SR)
C320	50V4.7
C337	50V1
C338	50V1 (C-105)
C341	50V4.7
C342	50V4.7
C350	50V0.47
C375	50V4.7
C380	50V4.7
C385	50V1
C386	50V1 (C-105)
C388	50V2.2
C392	50V0.1(C-105)
C393	6.3V1000
C394	10V470
C398	50V0.1
C399	50V0.1
C319	0.01 (SR)

IC301	PLL0305A
IC302	SM5152A1
IC303	M54460L
IC304	S042P
IC305	S042P
IC306	NJM3404AS
IC307	NJM45585
IC311	L78M08CV
IC312	L78M05CV
IC313	S-7116A
IC314	M51953BL
IC315	UC-1251
IC316	HD14093BP

D308	KV1330
D312	S5566G
D313	S5566G
D316	S5566G

L301	LE246
L302	LB684
L303	LF131
L304	LF131
L307	LZ051 4.7μH
L308	LZ051 10μH
L310	LF159
L312	LZ051 2.7μH
L313	LF130
L314	LF131
L315	LF172
L316	LZ044 6.8μH
L317	LB686
L318	LF133
L319	LF158

VR301	100B (RT-528)
VR302	100B (RT-528)
VR303	22KB (RT-528)
VR304	10KB (RT-528)

J301	JK276 (3P)
J302	JK276 (4P)
J303	JK276 (5P)
J304	JK276 (9P)
J305	JK276 (9P)
J306	JK276 (5P)
J307	JK276 (3P)
J308	JK276 (3P)
J311	JK326
J312	JK326

S301	SW650
------	-------

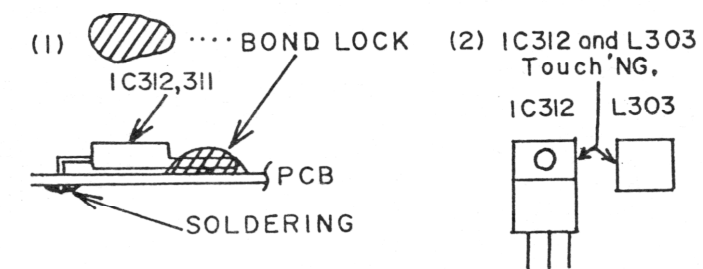
X301	QX122 10.2±17MHz
X302	QX287 22.00MHz
X303	QX126 3.579545MHz

R304	10K
R309	3.3K 1/8W
R317	10K 1/8W
R321	330 1/8W
R323	150K 1/8W
R328	1K 1/8W
R347	1.5K
R354	4.7K 1/8W
R356	10K
R365	39K

RR301	HA117
RR302	HA096
RR303	HA093

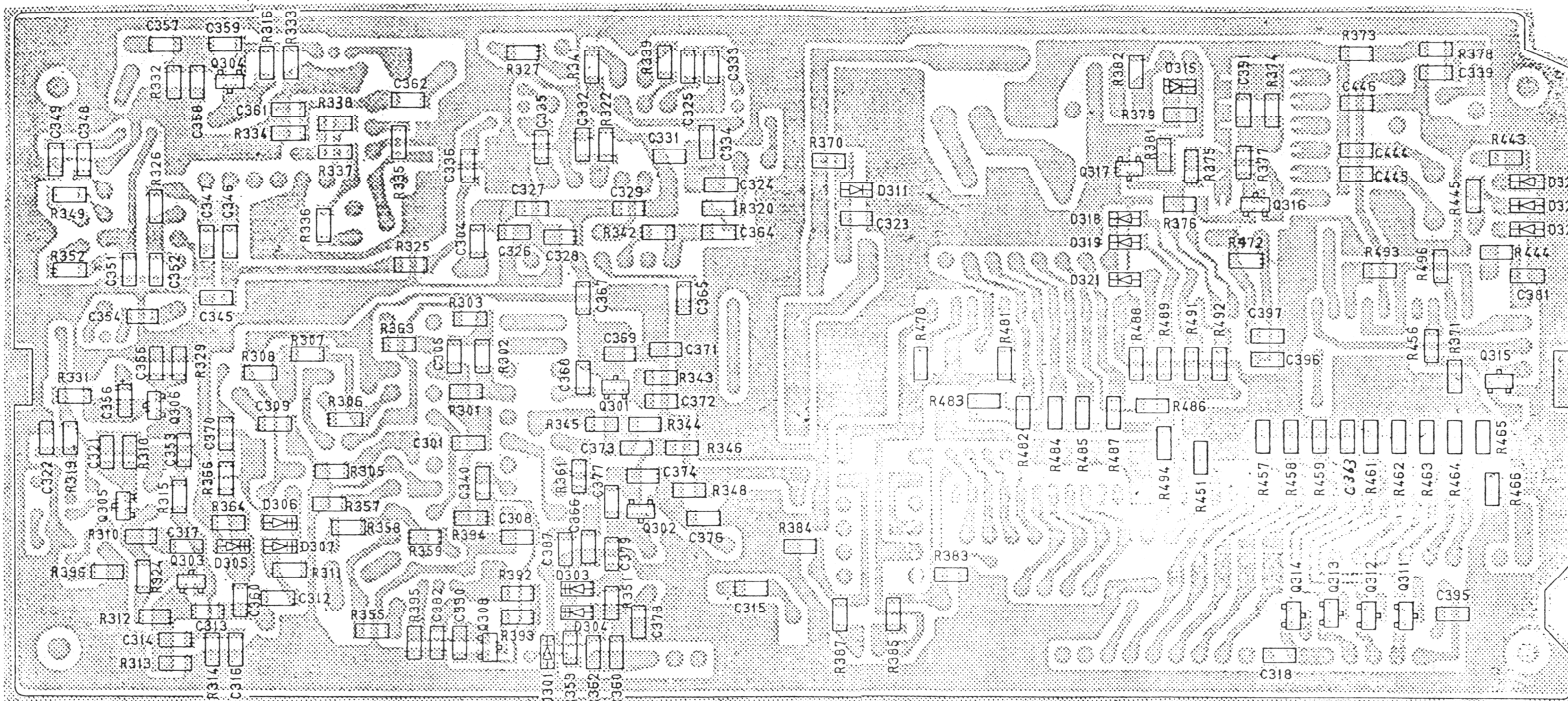
Y301	YY548
------	-------

~ Replacement ~



- NOTES:
1. RESISTANCE VALUES ARE SHOWN IN OHMS UNLESS OTHERWISE NOTED. (K=KILO OHM, M=MEG OHM)
 2. RESISTOR WATTAGES ARE 1/8W UNLESS OTHERWISE NOTED.
 3. CAPACITANCE VALUES ARE INDICATED IN MICRO FARADS UNLESS OTHERWISE NOTED. (P=MICRO-MICRO FARAD)

TITLE MICOM PCB
PARTS ASS'Y TOP VIEW
DRAWING NO.
E23-8314



D301	15V200
D303	15V200
D304	15V200
D305	15V200
D306	15V200
D307	15V200
D311	RLS4148
D315	RLS4148
D318	RLS4148
D319	RLS4148
D321	RLS4148
D322	RLS4148
D323	RLS4148
D324	RLS4148

Q301	25C3121
Q302	25C3121
Q303	25C3121
Q304	25C3121
Q305	25C3121
Q306	25C3121
Q308	25C2814F5
Q311	25A1179-M6
Q312	25A1179-M6
Q313	25A1179-M6
Q314	25A1179-M6
Q315	25C2712Y
Q316	25A1179-M6
Q317	25C2712Y

R301	10M
R302	15K
R303	15K
R307	7K
R305	10K
R306	10K
R308	10K
R310	330
R311	10K
R312	10K
R313	15K
R314	680
R315	1K
R316	12K
R318	1K
R319	100
R320	330
R322	1K
R324	10K
R325	RZ025
R326	1K
R327	22K
R329	1K
R331	1.5K
R332	1K
R333	10K
R334	10K
R335	3.3K
R336	10K
R337	10K
R339	180

R341	180
R342	3.3K
R343	220
R344	4.7K
R345	5.6K
R346	680
R348	3.3K
R349	180
R351	1.5K
R352	180
R353	3.3K
R355	RZ025
R357	10K
R358	4.7K
R359	1.2K
R360	68K
R361	1.2K
R362	10K
R363	1K
R364	27K
R366	3.3K
R370	1.5K
R371	2.2K
R373	47K
R374	100K
R375	10K
R376	10K
R377	1K
R378	82K
R379	100K

R381	10K
R382	10K
R383	10K
R384	10K
R385	1K
R387	1K
R392	4.7K
R393	470
R394	680
R395	6.8K
R396	1.8K
R443	1.5K
R444	1M
R445	1.5K
R451	10K
R456	10K
R457	10K
R458	10K
R459	10K
R461	10K
R462	10K
R463	10K
R464	10K
R465	10K
R466	10K
R478	10K
R481	10K
R482	4.7K
R483	4.7K

R484	4.7K
R485	4.7K
R486	4.7K
R487	4.7K
R488	10K
R489	10K
R491	10K
R492	10K
R493	2.2K
R494	10K
R496	10K
R338	2.2K
R472	1M
C301	0.047/C *
C304	0.001/B
C305	0.01/Y
C308	180P/B
C309	0.039/C *
C312	100P/CG *
C313	15P/CH
C314	220P/CG *
C315	2P/CH
C316	68P/CG *
C317	0.001/B
C318	0.01/Y
C321	0.047/C *
C322	0.001/B
C323	0.01/Y

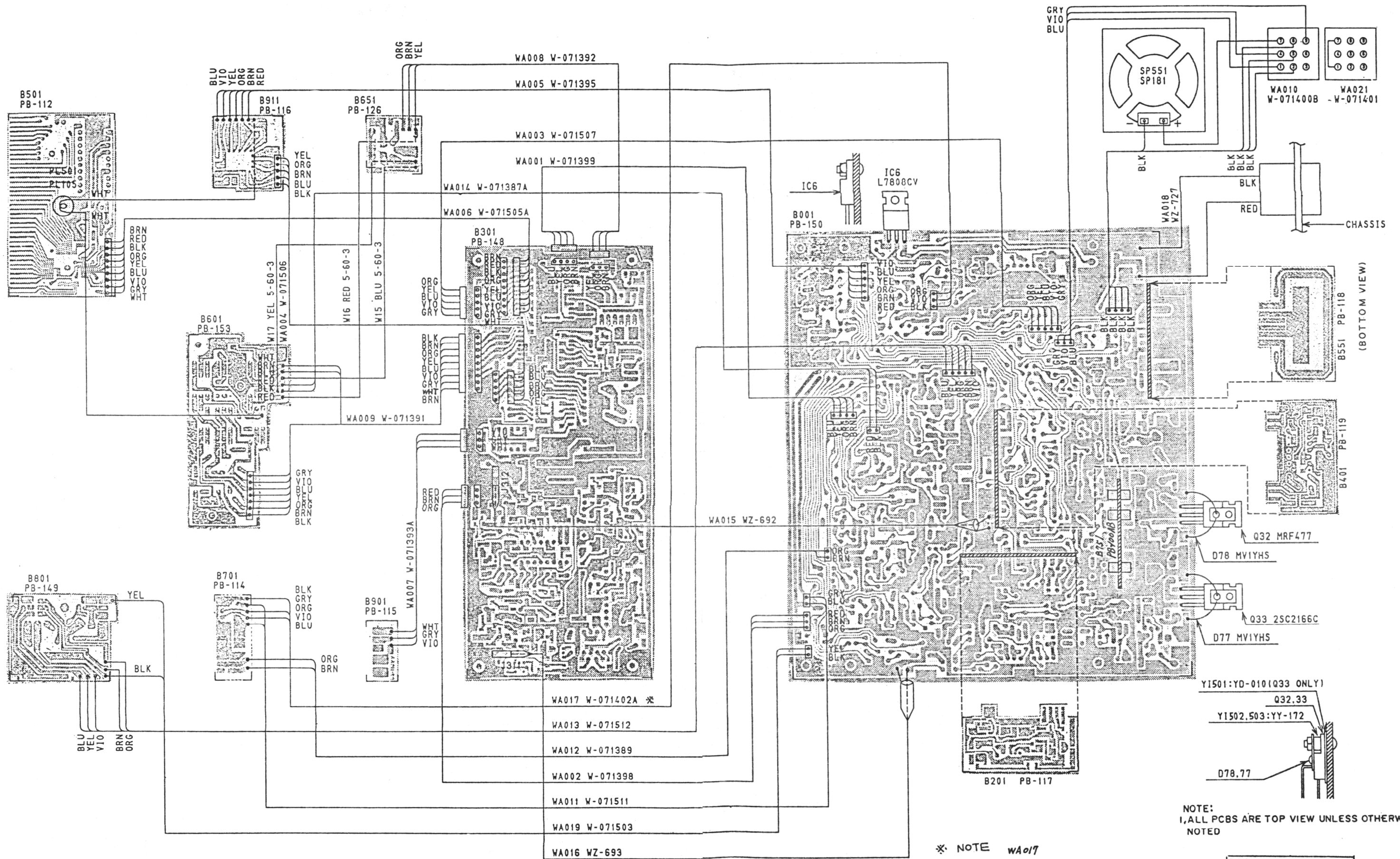
C324	56P/SL
C325	0.001/B
C326	9P/SL
C327	22P/SL
C328	39P/SL
C329	6P/SL
C330	390P/B
C331	18P/SL
C332	0.01/Y
C333	150P/B
C334	150P/B
C335	0.001/B
C336	0.001/B
C339	0.047/C *
C340	22P/SL
C345	15P/SL
C346	8P/SL
C347	15P/SL
C348	0.001/B
C349	100P/B
C351	100P/B
C352	0.047/C *
C353	0.001/B
C354	0.001/B
C355	0.047/C *
C356	0.001/B
C357	0.001/B
C358	150P/CG *
C359	390P/CG *
C360	5P/CH
C361	12P/CH

C362	100P/CG *
C364	0.001/B
C365	0.001/B
C366	0.047/C *
C367	0.001/B
C368	0.001/B
C369	39P/SL
C370	0.01/Y
C371	0.01/Y
C372	0.001/B
C373	5P/CH
C374	10P/CH
C376	0.01/Y
C377	5P/CH
C378	0.001/B
C379	33P/SL
C381	0.022/C *
C382	0.0047/C *
C387	0.022/C *
C391	0.01/Y
C395	0.01/Y
C396	47P/UJ *
C397	47P/UJ *
C444	10P/CH
C445	10P/CH
C446	0.047/C *
C363	0.01/Y

* M/L (3216)

NOTES:
1. RESISTANCE VALUES ARE SHOWN IN OHMS UNLESS OTHERWISE NOTED. (K=KILO OHM, M=MEG OHM)
2. RESISTOR WATTAGES ARE 1/8W UNLESS OTHERWISE NOTED.
3. CAPACITANCE VALUES ARE INDICATED IN MICRO FARADS UNLESS OTHERWISE NOTED. (P=MICRO-MICRO FARAD)

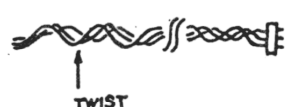
TITLE MICOM PCB
PARTS ASS'Y BOTTOM VIEW
DRAWING NO.
E23-8315



(BOTTOM VIEW)

NOTE:
1, ALL PCBs ARE TOP VIEW UNLESS OTHERWISE NOTED

* NOTE WA017



TITLE	WIRING DIAGRAM
DRAWING NO.	E 32-3078

UT550C/WIR.2/2::24:1

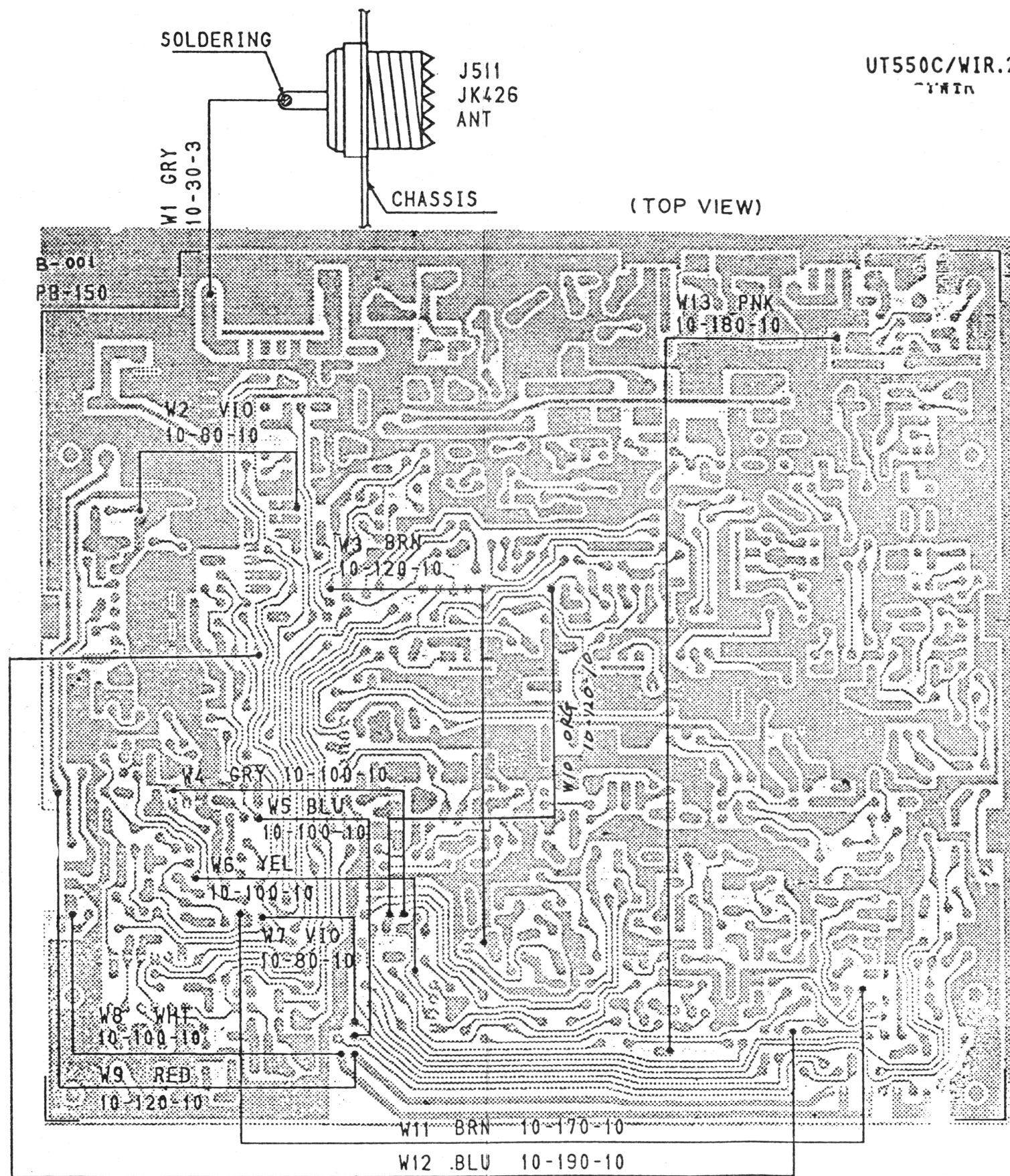
717111

SOLDERING

J511
JK426
ANT

CHASSIS

(TOP VIEW)



TITLE
WIRING DIAGRAM
DRAWING NO.
E33-3079