

VOLTAGE CHART

		D.C. VOLTAGE														R.F. VOLTAGE															
PIN	MJ	1		2		3		4		5		6		7		1		2		3		4		5		6		7			
		R	T	R	T	R	T	R	T	R	T	R	T	R	T	R	T	R	T	R	T	R	T	R	T	R	T	R	T		
1		E	E	E	E	E	E	E	E	E	E	E	E	0	0	E	E	E	E	E	E	E	E	E	E	E	E	E	E	3180KHz 85dB	—
2		E	E	E	E	0	0	0	0	0	0	-70	-55	E	E	E	E	—	—	—	—	—	—	—	—	—	—	—	—	E	E
3		6.0	6.0	0	0	13.0	12.5	0	0	0.7	0.7	-18	0	E	E	* 3	* 3	3180KHz 85dB	—	—	—	—	—	—	—	—	—	—	E	E	
4		0.5	0.5	E	E	0	0	0	0	8.5	8.5	-20	-3.5	0	0	* 2	* 2	E	E	—	—	—	—	—	—	—	—	—	—	3180KHz 85dB	—
5		5.5	5.5	0	0	0	0	0	0	6.0	6.0	-150	-140	0	13.0	—	—	—	0.03	0.08	0	—	—	—	—	—	—	—	—	—	
6		6.0	6.0	E	E	0	0	E	E	0	0	170	170	0	0	—	—	E	E	—	—	E	E	0.8	0.8	—	—	—	—		
7		E	E	13.0	12.5	E	E	0	0	E	E	2.7	2.7	13.5	13.5	E	E	—	—	E	E	—	—	E	E	—	—	—	—		
8		0	0	E	E	0	11.5	0	0	0	0	0.6	2.7	1.0	1.0	14MHz 56dB	—	E	E	—	—	—	—	—	—	—	—	—	—	—	
9		8.0	13.0	12.0	0	9.0	9.0	9.0	9.0	0	0	12.5	0	E	E	—	—	—	—	—	—	—	—	—	—	—	—	E	E		
10		0	11.5	E	E	6.5	0.35	1.5	1.5	13.0	12.5	0	11.5	E	E	—	—	E	E	—	0.01	—	—	—	—	—	—	E	E		
11		13.0	12.5	0	0	13.0	12.5	E	E	0	0	2.5	2.5	—	—	—	2	0.08	0.08	—	—	E	E	—	—	—	—	—	—		
12		12.5	0	E	E	0.7	0.7	9.0	9.0	6.6	0.3	13.5	13.0	—	—	—	—	E	E	—	—	—	—	—	0.04	—	—	—	—		
13		12.0	0	0	11.5	8.0	13.0	0	0	12.5	0	6.0	6.0	—	—	—	0.36	—	—	—	—	—	—	—	—	—	—	—	—		
14		13.0	12.5	E	E	E	E	6.0	6.0	12.5	0.3	13.0	12.5	—	—	—	—	—	E	E	E	—	—	—	—	—	—	—	—		
15		0	0	13.0	12.5	0	0	13.0	12.5	—	—	0	0	—	—	—	—	5720KHz 77dB	0.3	3180KHz 94dB	0.14	—	—	—	—	—	—	—	—	—	
16		0	11.5	13.0	12.5	0	0	13.0	12.5	—	—	0	0	—	—	—	—	—	0.36	—	—	—	—	—	—	—	—	—	—		
17		13.0	12.5	E	E	0	0	0	0	—	—	0	0	—	—	5720KHz 77dB	0.3	E	E	—	0.03	—	—	—	—	—	—	—	—		
18		E	E	E	E	0	0	E	E	—	—	E	E	—	—	E	E	E	E	—	—	E	E	—	—	E	E	—	—		
19		—	—	—	—	13.0	12.5	E	E	—	—	—	—	—	—	—	—	—	—	—	—	E	E	—	—	—	—	—	—		
20		—	—	—	—	12.5	0	E	E	—	—	—	—	—	—	—	—	—	—	—	—	—	—	—	—	—	—	—	—		
21		—	—	—	—	6.0	6.0	E	E	—	—	—	—	—	—	—	—	—	—	—	—	—	—	—	—	—	—	—	—		
22		—	—	—	—	E	E	0	0	—	—	—	—	—	—	—	—	—	—	E	E	—	—	—	—	—	—	—	—		

VALUES ARE IN VOLTS D.C.
R:RECEIVE, T:TRANSMIT

MODE:USB, BAND:20M, R:RECEIVE, T: TRANSMIT
VALUES WITHOUT ANY UNIT ARE IN VOLTS R.M.S.
VALUES WITH DB ARE SIGNAL GENERATOR OUTPUT LEVELS TO
PRODUCE S-9.
VALUES GIVEN UNDER THE COLUMN T ARE SIGNAL LEVELS TO
PRODUCE 100W OUTPUT POWER MODULATED BY 1KHz MIC INPUT.

RESISTANCE CHART

MJ PINNO. \ NO.	1	2	3	4	5	6	7
1	E	E	E	E	E	E	∞
2	E	E	150	30K	0	10K	E
3	300	0	10	0	∞	4K	E
4	3K	E	∞	※	10K	10K	0
5	300	∞	0	∞	200	30K	0
6	200	E	1K	E	5	50K	0
7	E	10	E	0	E	3K	10
8	0	E	0	1K	5K	6K	100K
9	2.5K	120	10K	10K	1K	120	E
10	※	E	3K	50K	10	0	E
11	100	∞	10	E	1M	3K	—
12	120	E	1K	50K	3K	10	—
13	120	0	3K	∞	1.2K	200	—
14	10	E	E	200	700	10	—
15	0	100	∞	10	—	50K	—
16	0	100	∞	10	—	0	—
17	100	E	∞	※	—	∞	—
18	E	E	∞	∞	—	E	—
19	—	—	10	※	—	—	—
20	—	—	120	E	—	—	—
21	—	—	200	E	—	—	—
22	—	—	E	※	—	—	—

VALUES ARE IN OHMS.

Order Instruction:

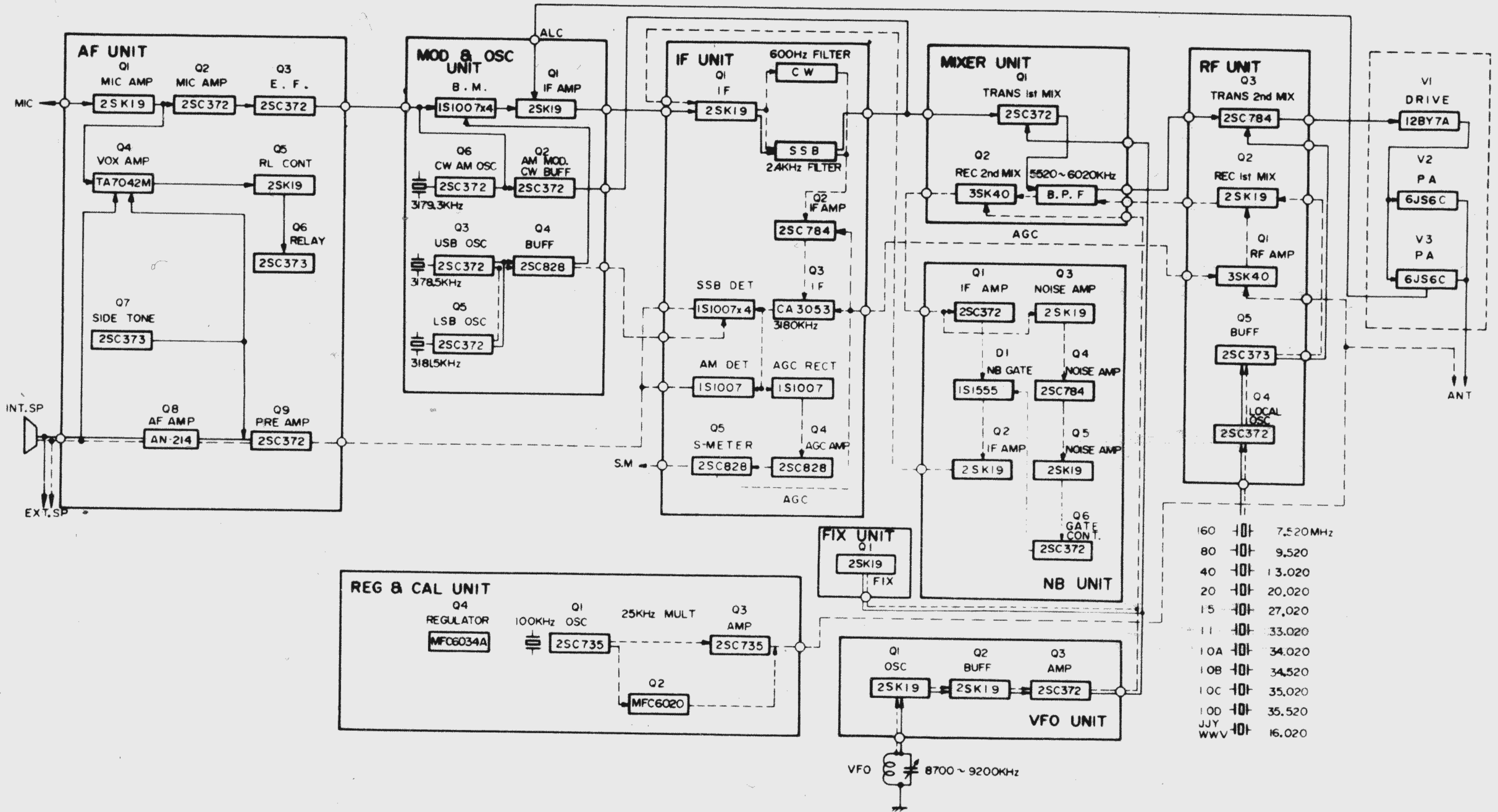
Parts number is independent for each unit, except T-transformers and T-inductors, therefore it is requested to specify parts number together with unit classification as following example.

No. 1 RF Unit R1 100K ohm 1/4w ※ VALUE IS NOMINAL

RF UNIT				C-CAPACITOR			
PRINTED CIRCUIT BOARD PB-1181(A~Z)				DIPPED MICA			
Q-FET & TRANSISTOR				6, 19	50 WV	20PF ± 10%	
4	TR.	2SC372Y		1, 8	50 WV	40PF ± 10%	
5	TR.	2SC373		8	50 WV	100PF ± 10%	
3	TR.	2SC784R		2	50 WV	470PF ± 10%	
2	FET	2SK19GR		CERAMIC DISC			
1	FET	3SK40M		7	50 WV	0.001 μF	+ 80% - 20%
D-DIODE				3-5, 9, 11, 13	50 WV	0.01 μF	+ 80% - 20%
1, 2	Si.	1S1555		17	50 WV	0.047 μF	+ 80% - 20%
R-RESISTOR				CERAMIC FEED THRU			
CARBON FILM				14-16	500 WV	0.001 μF	+ 100% 0%
22	1/4 W	56 Ω ± 10%		ELECTROLYTIC			
23	1/4 W	100 Ω ± 10%		18	16 WV	1 μF	
16, 24	1/4 W	220 Ω ± 10%		TC-TRIMMER CAPACITOR			
6	1/4 W	330 Ω ± 10%		CERAMIC			
10, 19	1/4 W	470 Ω ± 10%		1-3	ECVIZW50P32	50 PF	
11	1/4 W	560 Ω ± 10%		L-INDUCTOR			
9, 13	1/4 W	1 KΩ ± 10%		1	BPF-A		
7	1/4 W	1.8 KΩ ± 10%		2	BPF-B		
8	1/4 W	2.2 KΩ ± 10%		3	BPF-C		
17, 20	1/4 W	3.3 KΩ ± 10%		34	RF CHOKE	1.95 μH	
21	1/4 W	8.2 KΩ ± 10%		4, 8	RF CHOKE	250 μH	
14, 18	1/4 W	15 KΩ ± 10%		T-TRANSFORMER & INDUCTOR			
2	1/4 W	22 KΩ ± 10%		112A	IF TRANSFORMER		
4	1/4 W	82 KΩ ± 10%		113	TRAP COIL		
1, 3, 5, 12	1/4 W	100 KΩ ± 10%		X-CRYSTAL			
VR-VARIABLE RESISTOR				1	HC-18/U	6360 KHz	
1	TR-11R	5KΩB		IF UNIT			
C-CAPACITOR				PRINTED CIRCUIT BOARD PB-1183(A~Z)			
DIPPED MICA				Q-FET, IC & TRANSISTOR			
17	50 WV	6PF ± 0.5PF		2	TR.	2SC784R	
5	50 WV	50PF ± 10%		4, 5	TR.	2SC828Q	
1, 11	50 WV	100PF ± 10%		3	IC	CA3053	
CERAMIC DISC				1	FET	2SK19GR	
3	50 WV	0.001 μF	+ 80% - 20%	D-DIODE			
2, 4, 7-10, 12-16,	50 WV	0.01 μF	+ 80% - 20%	1-5, 7-11	Ge.	1S1007	
6, 18	50 WV	0.047 μF	+ 80% - 20%	6	Si.	1S1555	
ELECTROLYTIC				12	Zener	WZ-110	
19	16 WV	47 μF		R-RESISTOR			
L-INDUCTOR				CARBON FILM			
1, 2	RF CHOKE	1mH		2, 13, 16	1/4 W	100 Ω ± 10%	
3	RF CHOKE	250mH		23	1/4 W	220 Ω ± 10%	
MIXER UNIT				20	1/4 W	470 Ω ± 10%	
PRINTED CIRCUIT BOARD PB-1082(A~Z) PB-1180(A~Z)				12, 15, 19	1/4 W	1 KΩ ± 10%	
Q-FET & TRANSISTOR				3, 14	1/4 W	2.2 KΩ ± 10%	
1	TR.	2SC372Y		22	1/4 W	2.7 KΩ ± 10%	
2	FET	3SK40M		8, 9	1/4 W	3.3 KΩ ± 10%	
D-DIODE				11	1/4 W	3.9 KΩ ± 10%	
1	Si.	1S1555		4, 5	1/4 W	5.6 KΩ ± 10%	
R-RESISTOR				17, 24, 25, 27	1/4 W	10 KΩ ± 10%	
CARBON FILM				10	1/4 W	27 KΩ ± 10%	
12	1/4 W	10 Ω ± 10%		1, 18, 21	1/4 W	100 KΩ ± 10%	
5, 7	1/4 W	100 Ω ± 10%		CARBON COMPOSITION			
13	1/4 W	470 Ω ± 10%		26	1/4 W	1 MΩ ± 10%	
3, 16, 17	1/4 W	1 KΩ ± 10%		6, 7	1/2 W	100 Ω ± 10%	
2	1/4 W	4.7 KΩ ± 10%		VR-VARIABLE RESISTOR			
14, 15	1/4 W	5.6 KΩ ± 10%		1	TR12R	500ΩB	
10	1/4 W	10 KΩ ± 10%		2	TR11R	500ΩB	
4, 6	1/4 W	15 KΩ ± 10%		C-CAPACITOR			
11	1/4 W	22 KΩ ± 10%		DIPPED MICA			
1	1/4 W	27 KΩ ± 10%		1, 24, 25	50 WV	100PF ± 10%	
8	1/4 W	100 KΩ ± 10%					
9	1/4 W	220 KΩ ± 10%					

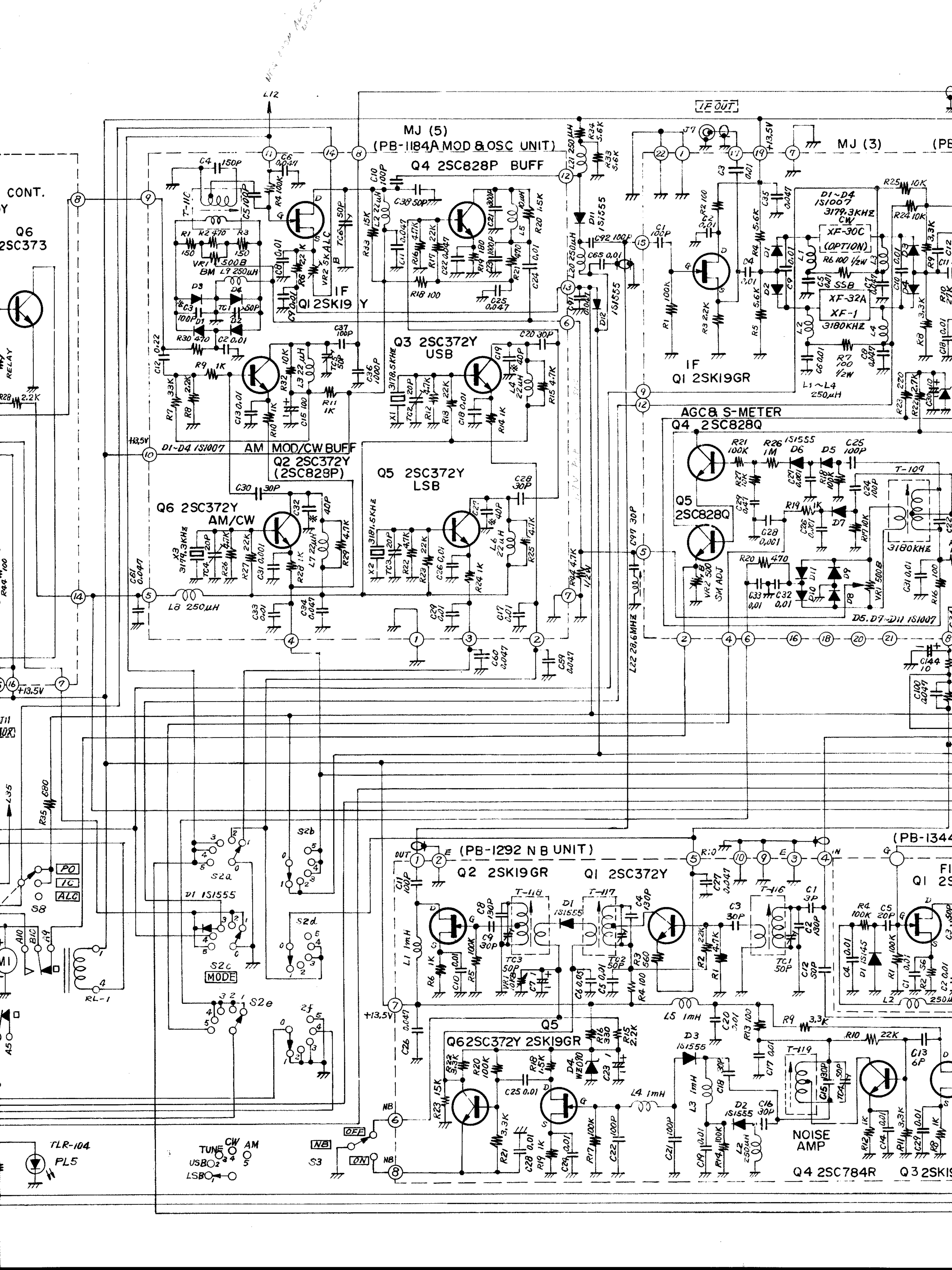
T-TRANSFORMER			D-DIODE		
110	IF TRANSFORMER		1~3	Si	1S1555
X-CRYSTAL			4	Zener	WZ090
1	HC-6/U 3178.5KHz(USB)		R-RESISTOR		
2	HC-6/U 3181.5KHz(LSB)		CARBON FILM		
3	HC-6/U 3179.3KHz(CW/AM)		4, 13	$\frac{1}{4}W$	100 $\Omega \pm 10\%$
			16	$\frac{1}{4}W$	330 $\Omega \pm 10\%$
			3	$\frac{1}{4}W$	560 $\Omega \pm 10\%$
REG. & CALIB. UNIT			6, 8, 12, 19	$\frac{1}{4}W$	1 K $\Omega \pm 10\%$
PRINTED CIRCUIT BOARD PB-1314(A~Z)			18	$\frac{1}{4}W$	1.5K $\Omega \pm 10\%$
Q-TRANSISTOR & IC			15	$\frac{1}{4}W$	2.2K $\Omega \pm 10\%$
1, 3	TR.	2SC735Y	9, 11, 21, 22	$\frac{1}{4}W$	3.3K $\Omega \pm 10\%$
2	IC	MFC-6020	1	$\frac{1}{4}W$	4.7K $\Omega \pm 10\%$
4	IC	MFC-6030A~4A	23	$\frac{1}{4}W$	15 K $\Omega \pm 10\%$
D-DIODE			2, 10	$\frac{1}{4}W$	22 K $\Omega \pm 10\%$
1, 2, 3	Si	1S1555	5, 7, 14, 17, 20	$\frac{1}{4}W$	100 K $\Omega \pm 10\%$
R-RESISTOR			VR-VARIABLE RESISTOR		
CARBON FILM			1	TRIIR	10K Ω B
3, 6	$\frac{1}{4}W$	100 $\Omega \pm 10\%$	C-CAPACITOR		
10, 19, 20	$\frac{1}{4}W$	470 $\Omega \pm 10\%$	DIPPED MICA		
8	$\frac{1}{4}W$	560 $\Omega \pm 10\%$	1	50WV	3PF $\pm 0.5PF$
7, 21	$\frac{1}{4}W$	680 $\Omega \pm 10\%$	13	50WV	6PF $\pm 1PF$
16	$\frac{1}{4}W$	1.5K $\Omega \pm 10\%$	3, 9, 16, 18	50WV	30PF $\pm 10\%$
17	$\frac{1}{4}W$	4.7K $\Omega \pm 10\%$	12	50WV	50PF $\pm 10\%$
1, 4, 13, 15, 18	$\frac{1}{4}W$	10 K $\Omega \pm 10\%$	11, 21, 22	50WV	100PF $\pm 10\%$
2	$\frac{1}{4}W$	15 K $\Omega \pm 10\%$	2, 4, 8, 15	50WV	130PF $\pm 10\%$
14	$\frac{1}{4}W$	47 K $\Omega \pm 10\%$	CERAMIC DISC		
2, 5	$\frac{1}{4}W$	100 K $\Omega \pm 10\%$	5, 10, 14, 17, 19, 20, 24,	50WV	0.01 μ F $\pm \begin{matrix} 80\% \\ 20\% \end{matrix}$
CARBON COMPOSITION			25, 28, 29		
9	$\frac{1}{2}W$	4.7 $\Omega \pm 10\%$	6, 26, 27	50WV	0.047 μ F $\pm \begin{matrix} 80\% \\ 20\% \end{matrix}$
11	2W	6.8K $\Omega \pm 10\%$	ELECTROLYTIC		
VR-VARIABLE RESISTOR			7, 23	16WV	1 μ F
4	TRIIR	500 Ω B	TC-TRIMMER CAPACITOR		
3	TRIIR	1K Ω B	CERAMIC		
2	VI60KRZ-1	10K Ω B	1~4	ECV1ZW50P40	50PF
C-CAPACITOR			L-INDUCTOR		
DIPPED MICA			2	RF CHOKE	250 μ H
7~9	50WV	30PF $\pm 10\%$	1, 3~5	RF CHOKE	1mH
5, 10	50WV	40PF $\pm 10\%$	T-TRANSFORMER		
1	50WV	100PF $\pm 10\%$	116~119	IF TRANSFORMER R124129	
2	50WV	250PF $\pm 10\%$	FIX UNIT		
3	50WV	2000PF $\pm 10\%$	PRINTED CIRCUIT BOARD PB-1344(A~Z)		
CERAMIC DISC			Q-FET		
4, 6	50WV	0.01 μ F	1	FET	2SK19GR
PLASTIC FILM			D-DIODE		
17	50WV	0.001 μ F	1	Varactor	1S145
15	50WV	0.1 μ F	R-RESISTOR		
20	250WV	0.047 μ F	CARBON FILM		
ELECTROLYTIC			2	$\frac{1}{4}W$	56 $\Omega \pm 10\%$
13, 14	16WV	1000 μ F	3	$\frac{1}{4}W$	100 $\Omega \pm 10\%$
16	16WV	100 μ F	1, 4	$\frac{1}{4}W$	100K $\Omega \pm 10\%$
11, 12	25WV	1000 μ F	C-CAPACITOR		
21	150WV	22 μ F	DIPPED MICA		
18, 19, 22	250WV	22 μ F	5	50WV	20PF $\pm 10\%$
TC-TRIMMER CAPACITOR			3	50WV	50PF $\pm 10\%$
CERAMIC			CERAMIC DISC		
1	ECV1ZW50P40	50PF	1, 2, 4	50WV	0.01 μ F $\pm \begin{matrix} 80\% \\ 20\% \end{matrix}$
L-INDUCTOR			L-INDUCTOR		
1, 2	RF CHOKE	4mH	2	RF CHOKE	250 μ H
X-CRYSTAL			1	FIX OUTPUT COIL	
1	HC-13/U	100KHz	VFO UNIT		
NB UNIT			PRINTED CIRCUIT BOARD PB-1056(A~Z)		
PRINTED CIRCUIT BOARD PB-1292(A~Z)			Q-FET & TRANSISTOR		
Q-FET & TRANSISTOR			3	TR.	2SC372Y
1, 6	TR.	2SC372Y	1, 2	FET	2SK19GR
4	TR.	2SC784R	D-DIODE		
2, 3, 5	FET	2SK19GR	1	Varactor	1S145
R-RESISTOR			R-RESISTOR		
CARBON FILM			CARBON FILM		
4, 7	$\frac{1}{4}W$	100 $\Omega \pm 10\%$	4, 7	$\frac{1}{4}W$	100 $\Omega \pm 10\%$
10	$\frac{1}{4}W$	270 $\Omega \pm 10\%$	10	$\frac{1}{4}W$	270 $\Omega \pm 10\%$
3, 6	$\frac{1}{4}W$	330 $\Omega \pm 10\%$	3, 6	$\frac{1}{4}W$	330 $\Omega \pm 10\%$
8	$\frac{1}{4}W$	8.2K $\Omega \pm 10\%$	8	$\frac{1}{4}W$	8.2K $\Omega \pm 10\%$

51, 62, 65, 81-83, 86, 87, 90, 118	50WV 0.01 μ F	+80% -20%	T-TRANSFORMER & CHOKE COIL	
33, 38, 50, 52, 59-61, 66, 69-73, 85, 89, 91, 94, 95, 100, 103	50WV 0.047 μ F	+80% -20%	11	POWER TRANSFORMER
8, 14, 15, 20, 22	500WV 0.0047 μ F	+100% -0%	12	AF CHOKE 20mH 0.5A
3, 19, 21, 101, 102	500WV 0.01 μ F	+100% -0%	F-FUSE	
74	1.4KV 0.001 μ F	+100% -0%	1	AC 5A(100-117V)3A(200-234V)
24	1.4KV 0.0047 μ F	+100% -0%	2	DC 20A
36, 75	1.4KV 0.01 μ F	+100% -0%	FH-FUSE HOLDER	
25	(RDA30) 3KV 150PF \pm 10%		1	AC S-N1001
132	3KV 600PF \pm 10%		2	DC S-N1102
CERAMIC FEED THRU			RL-RELAY	
30-32, 34, 35, 37, 39, 40, 67, 68, 84, 110	500WV 0.001 μ F	+100% -0%	1	AE3171-42
			2	MX2P
PLASTIC FILM			S-SWITCH	
140, 141	50WV 0.047 μ F \pm 20%		1	ROTARY RS13-13-11(BAND)
18	50WV 0.22 μ F \pm 20%		2	ROTARY ESRE365R20Z(MODE)
49	50WV 0.47 μ F \pm 20%		4	ROTARY ESRE246R20Z(SELECT)
METALIZED PAPER			6	SEASAW WD3001 (POWER)
76	160WV 2.2 μ F \pm 20%		5	SEASAW WD3201 (HEATER)
145	220VAC 1 μ F		3, 10	SLIDE SS-F22-08
ELECTROLYTIC			7-9	SLIDE SS-H23-08
142, 146	16WV 1 μ F		X-CRYSTAL	
54, 144	16WV 10 μ F		1	80M HC-25/U 9.52MHz
143	16WV 100 μ F		2	40M HC-25/U 13.02MHz
63	16WV 220 μ F		3	20M HC-25/U 20.02MHz
109	450WV 2.2 μ F		4	15M HC-25/U 27.02MHz
77, 78	500WV 100 μ F		5	11M HC-25/U 33.02MHz
VC-VARIABLE CAPACITOR			6	10M-A HC-25/U 34.02MHz
1	(PLATE) AIR RT18B300VC 300PF		7	10M-B HC-25/U 34.52MHz
2	(LOADING)AIR C123A129		8	10M-C HC-25/U 35.02MHz
TC-TRIMMER CAPACITOR			9	10M-D HC-25/U 35.52MHz
CERAMIC			10	JJY/WWV HC-25/U 16.02MHz
5	ECV1ZW10P32 10PF		11	160M HC-25/U 7.52MHz
1-4, 11-25	ECV1ZW50P32 50PF		MJ-MULTI JACK	
7, 8, 9	MICA B-1PY 40PF		1, 2, 6	3305-018-011 18P
6, 31	B-2PY 100PF		3, 4	3305-022-011 22P
10, 26, 28, 29	B-7P 420PF		5	3305-014-011 14P
27	AIR TSN-150C 10PF		7	3305-010-011 10P
PLASTIC FILM			PL-LAMP	
30	CTY12B 10PF		1, 2, 4	16V 0.15A
L-INDUCTOR			3	14V 40mA
12, 13, 16-18, 20, RF	CHOKE 250 μ H		5, 6	TLR-104
21, 26, 31, 35			PLH-LAMP HOLDER	
3, 11, 14, 15, 36	RF CHOKE(TV-245) 250 μ H		1, 2	#001011
9	RF CHOKE 300 μ H		3	B-1
7	RF CHOKE(PLATE) 500 μ H		VS-TUBE SOCKET	
2	RF CHOKE 1mH		1	TS103C01
24	P.S. $\frac{1}{2}$ W56 Ω 0.3 ϕ 10TS		2, 3	S-B0703
1, 4, 37	P.S. $\frac{1}{2}$ W56 Ω 0.6 ϕ 4TS		J-RECEPTACLE & JACK	
5, 6	P.S. 1 W56 Ω 1.0 ϕ 4TS		1, 4, 5, 7, 8, 11, 16-18	CN-7017
8	TANK COIL		2	S-G7616 (KEY)
22	TRAP COIL		10	S-G7814 (PHONE)
28	TRAP COIL		3	FM-144 (MIC)
29	TRAP COIL		6	J50-239 (ANT)
32	TRAP COIL		9	450AB12M(POWER)
33	TUNING COIL		12	P2240 (SP)
25	L.P.FILTER COIL		13	S-B0611 (EXT.VFO)
T-TRANSFORMER & INDUCTOR			14	SA602B(ACC)
101A	ANT COIL A		15	S-16303 (FAN)
102	GRID COIL A		M-METER	
103	DRIVER COIL A		1	MK-45
104	ANT COIL B			
105	DRIVER COIL B			
106	GRID COIL B			
107	5MHz TRAP COIL			
111	OSC COIL			
115	3.18MHz TRAP COIL			



160	10+	7.520MHz
80	10+	9.520
40	10+	13.020
20	10+	20.020
15	10+	27.020
11	10+	33.020
10A	10+	34.020
10B	10+	34.520
10C	10+	35.020
10D	10+	35.520
JJY	10+	
WWV	10+	16.020

VFO 8700 ~ 9200KHz



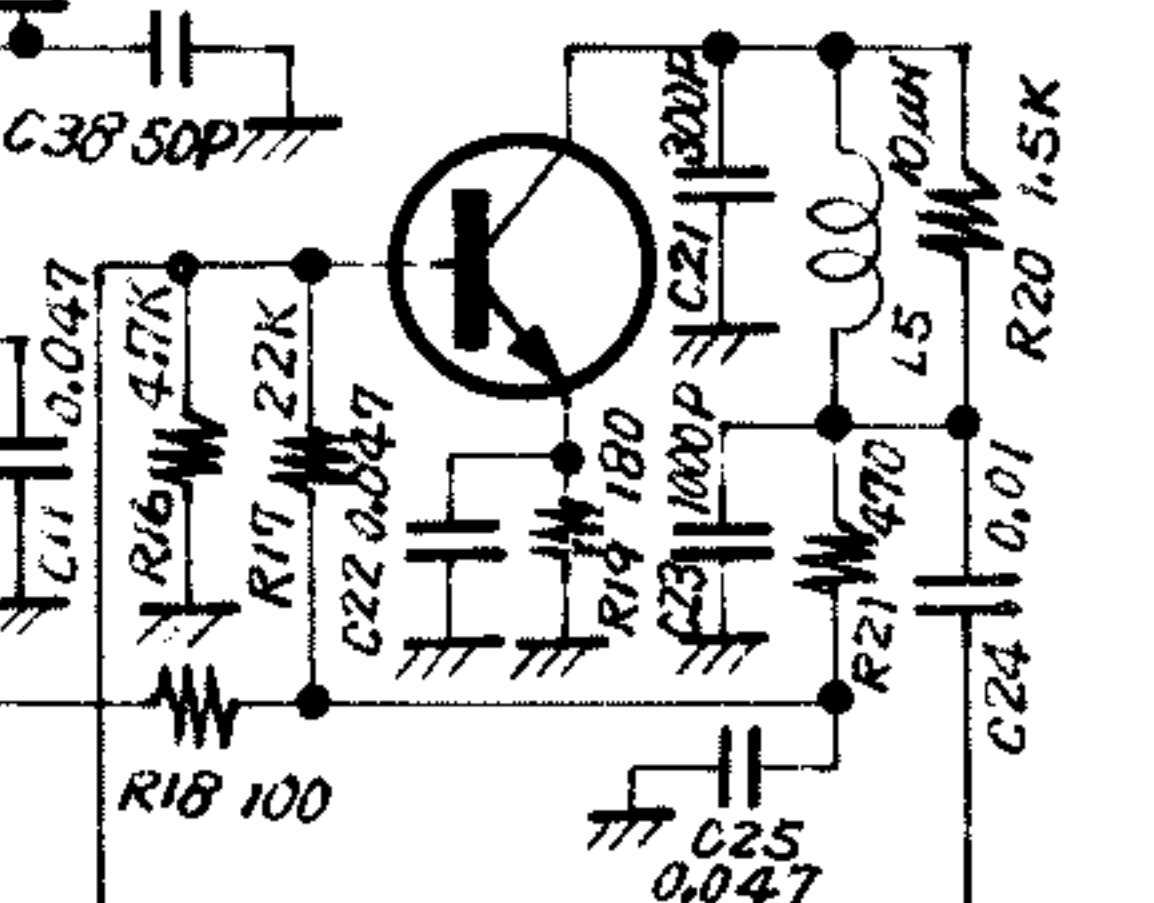
MJ (5)
(PB-1184A MOD & OSC UNIT)

IF OUT

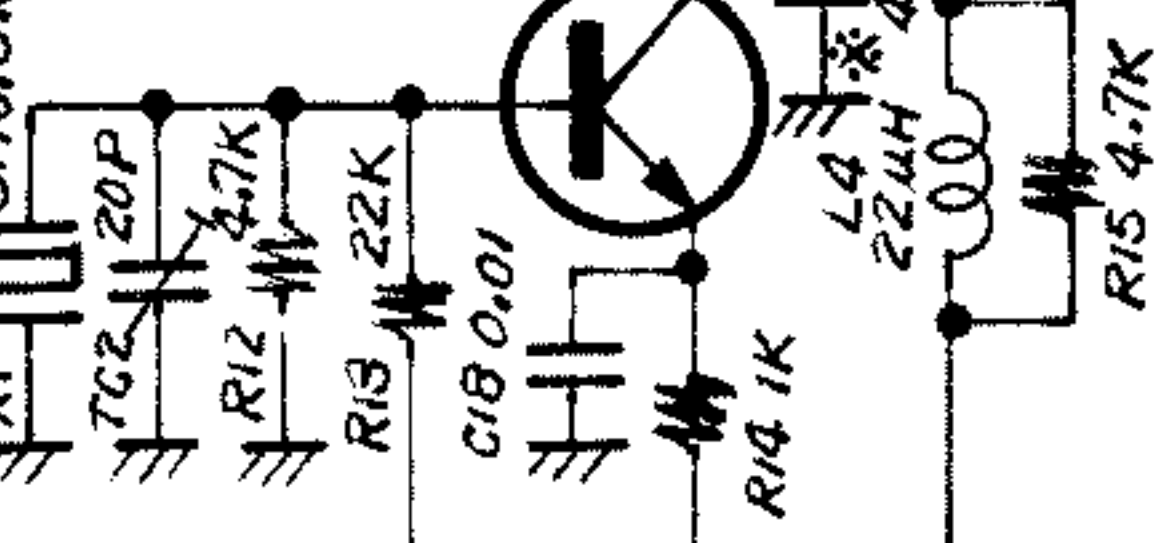
MJ (3)

(PB-1344)

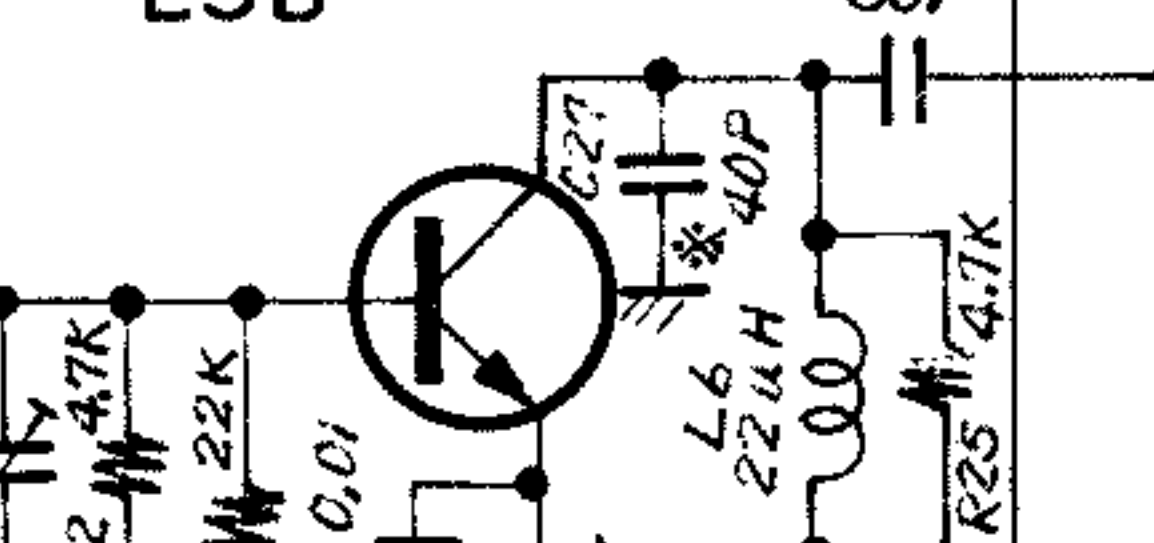
Q4 2SC828P BUFF



Q3 2SC372Y USB

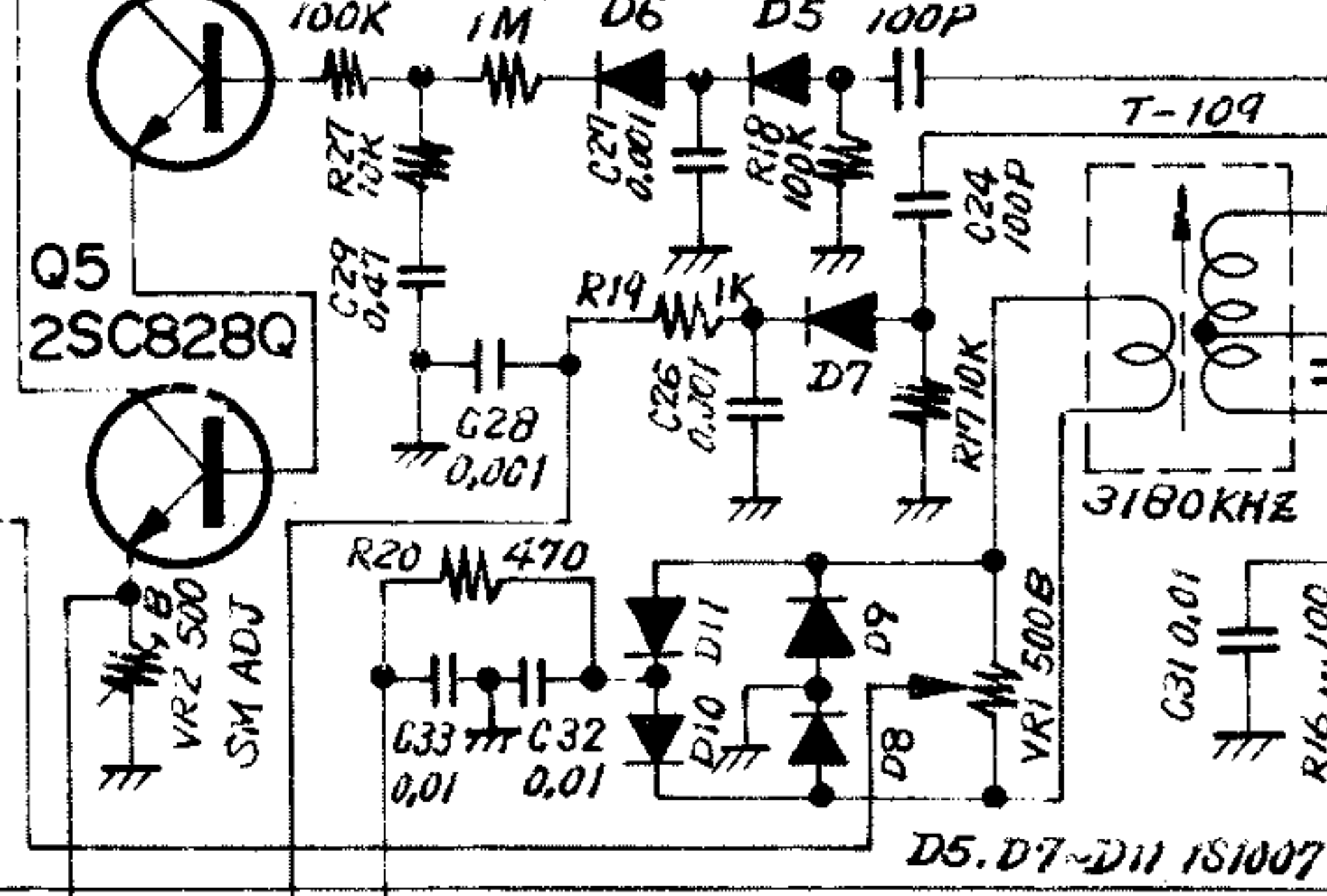


Q5 2SC372Y LSB



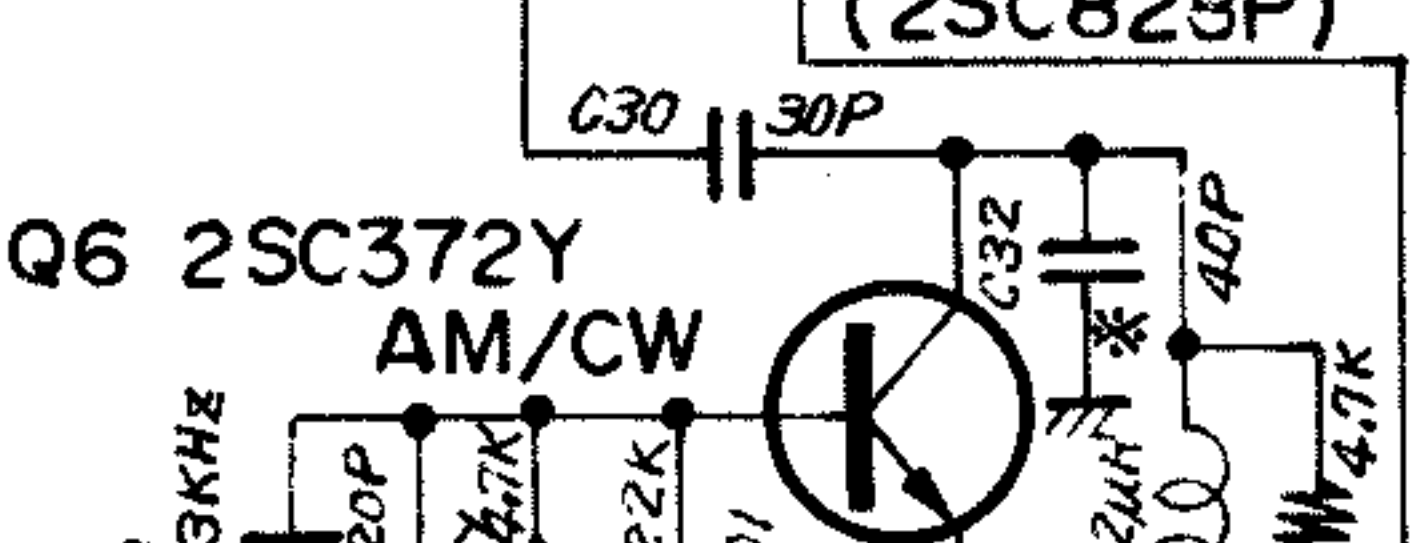
AGC & S-METER

Q4 2SC828Q

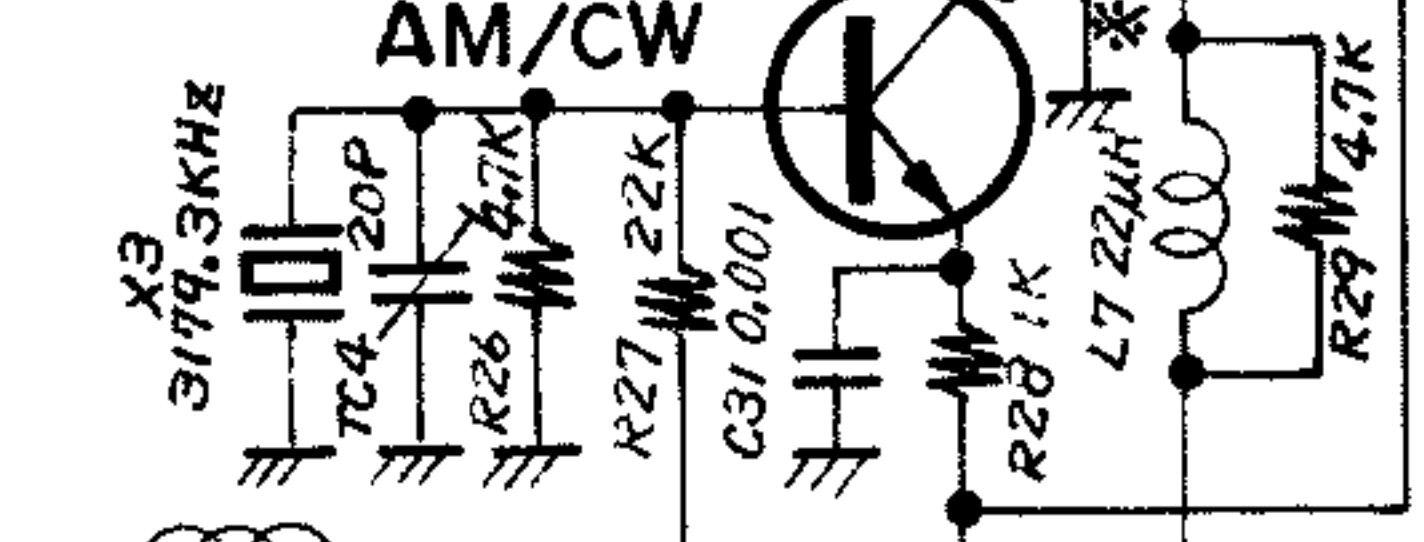


AM MOD/CW BUFF

Q2 2SC372Y (2SC828P)

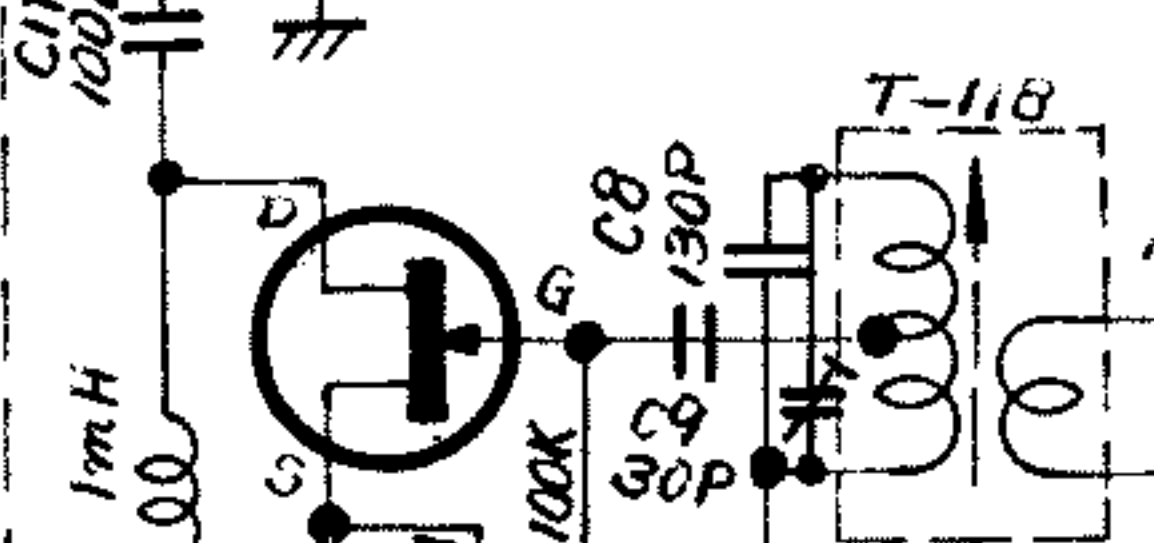


Q6 2SC372Y AM/CW

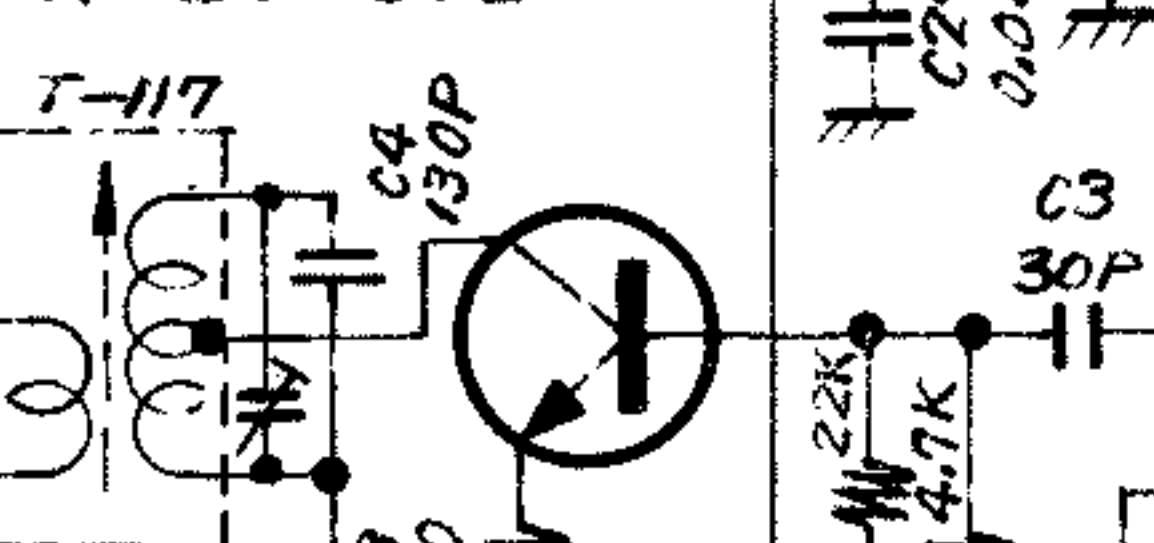


(PB-1292 NB UNIT)

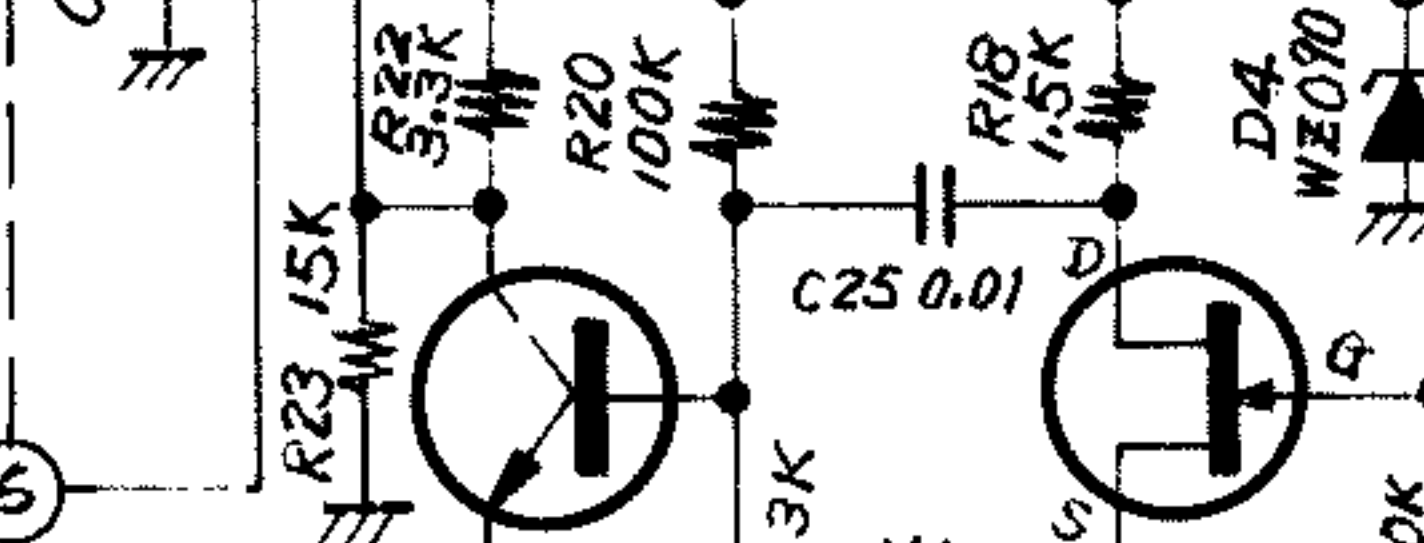
Q2 2SK19GR



Q1 2SC372Y



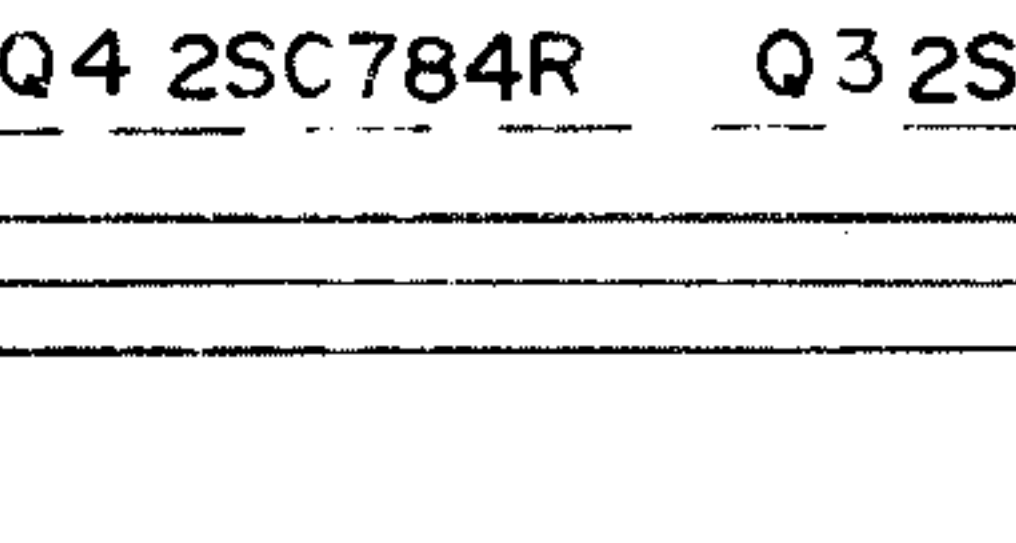
Q6 2SC372Y 2SK19GR



NOISE AMP

Q4 2SC784R

Q3 2SK19GR



CONT.
Q6 2SC373



RELAY

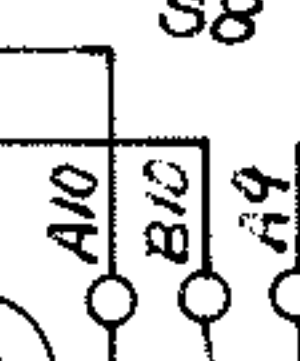


+13.5V

+1.35V

+13.5V

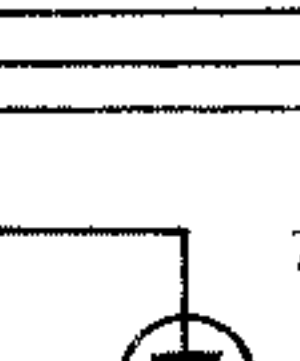
PO
IC
ALC



RL-1

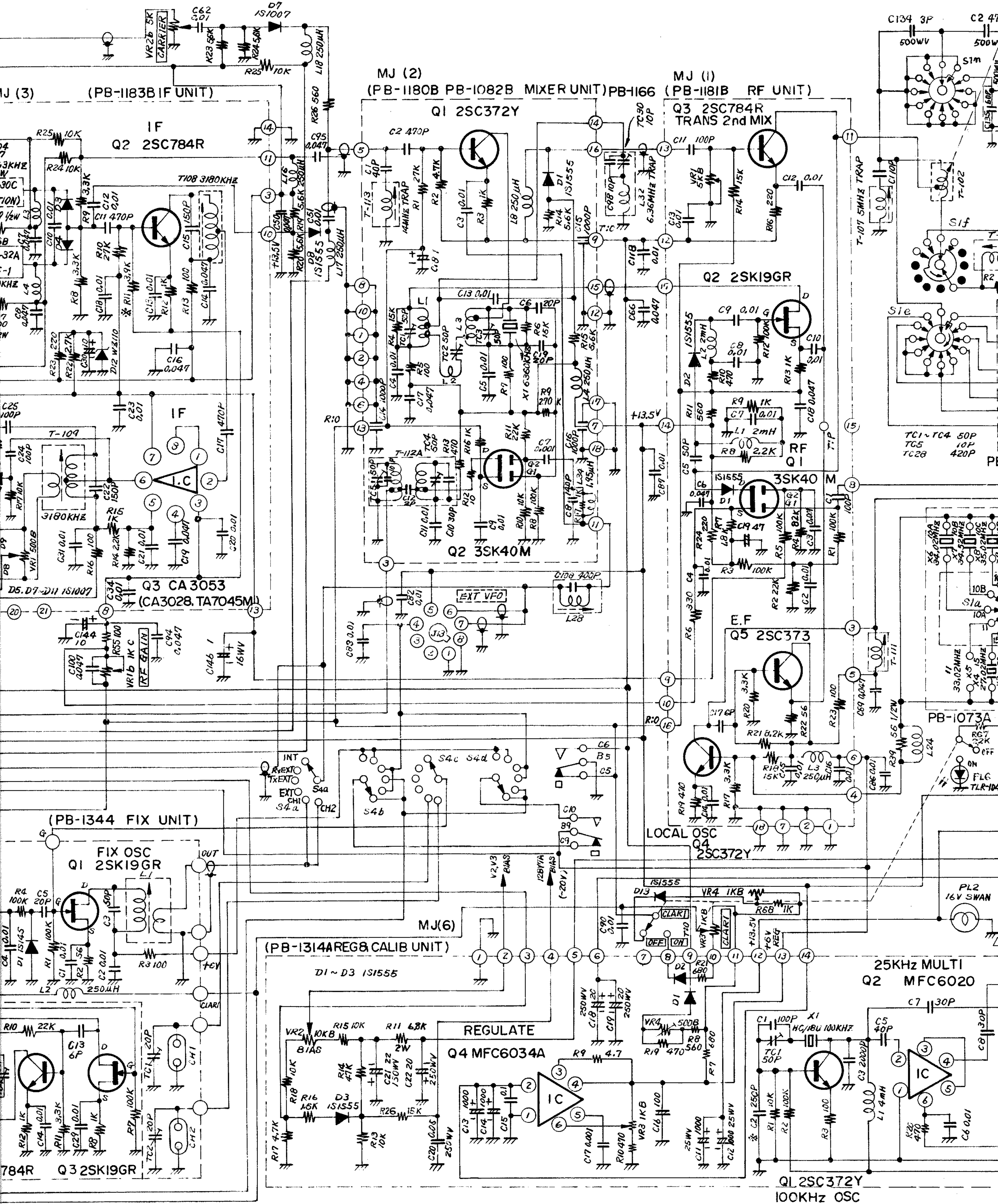


TLR-104
PL5



TUNE CW AM
USB 2 3 4 5
LSB 1





MJ (3) (PB-1183B IF UNIT)

MJ (2) (PB-1180B PB-1082B MIXER UNIT) PB-166 MJ (1) (PB-1181B RF UNIT)

IF Q2 2SC784R

Q1 2SC372Y

Q3 2SC784R TRANS 2nd MIX

T108 3180KHZ

Q2 3SK40M

Q2 2SK19GR

IF

EXT VFO

3SK40

Q3 CA3053 (CA3028, TA7045M)

Q5 2SC373

(PB-1344 FIX UNIT)

FIX OSC Q1 2SK19GR

(PB-1314 REG & CALIB UNIT)

REGULATE Q4 MFC6034A

25KHz MULTI Q2 MFC6020

Q3 2SK19GR

Q1 2SC372Y 100KHz OSC

